



[Go to Product page](#)

Datasheet for ABIN3042767
anti-CSNK1A1 antibody (N-Term)

4 Images

Overview

Quantity:	100 µg
Target:	CSNK1A1
Binding Specificity:	AA 30-68, N-Term
Reactivity:	Human, Rat, Mouse
Host:	Rabbit
Clonality:	Polyclonal
Conjugate:	This CSNK1A1 antibody is un-conjugated
Application:	Western Blotting (WB), Immunohistochemistry (Paraffin-embedded Sections) (IHC (p))

Product Details

Purpose:	Rabbit IgG polyclonal antibody for Casein kinase I isoform alpha(CSNK1A1) detection. Tested with WB, IHC-P in Human,Mouse,Rat.
Immunogen:	A synthetic peptide corresponding to a sequence at the N-terminus of human CSNK1A1 (30-68aa DIYLAINITNGEEVAVKLESQKARHPQLLYESKLYKILQ), identical to the related mouse and rat sequences.
Sequence:	DIYLAINITN GEEVAVKLES QKARHPQLLY ESKLYKILQ
Isotype:	IgG
Cross-Reactivity (Details):	No cross reactivity with other proteins.
Characteristics:	Rabbit IgG polyclonal antibody for Casein kinase I isoform alpha(CSNK1A1) detection. Tested with WB, IHC-P in Human,Mouse,Rat. Gene Name: casein kinase 1, alpha 1

Product Details

Protein Name: Casein kinase I isoform alpha

Purification: Immunogen affinity purified.

Target Details

Target: CSNK1A1

Alternative Name: CSNK1A1 ([CSNK1A1 Products](#))

Background: Casein kinase I isoform alpha is an enzyme that in humans is encoded by the CSNK1A1 gene. The CSNK1A1 gene is mapped to chromosome 5q32 based on an alignment of the CSNK1A1 sequence with the genomic sequence (GRCh37). It is reported that both screens identified CK1-alpha as a bifunctional regulator of NF-kappa-B. CK1-alpha dynamically associates with the CBM complex on T cell receptor engagement to participate in cytokine production and lymphocyte proliferation. However, CK1-alpha kinase activity has a contrasting role by subsequently promoting the phosphorylation and inactivation of CARMA1. CK1-alpha has thus a dual 'gating' function which first promotes and then terminates receptor-induced NF-kappa-B. ABC DLBCL cells required CK1-alpha for constitutive NF-kappa-B activity, indicating that CK1-alpha functions as a conditionally essential malignancy gene.

Synonyms: Casein kinase 1 alpha 1 antibody|Casein kinase I isoform alpha antibody|CK1 antibody|CK1A antibody|CKI alpha antibody|CKI-alpha antibody|CKIa antibody|Clock regulator kinase antibody|Csnk1a1 antibody|Down regulated in lung cancer antibody|HLCDGP1 antibody|KC1A_HUMAN antibody|PRO2975 antibody

Gene ID: 1452

UniProt: [P48729](#)

Pathways: [WNT Signaling](#), [Hedgehog Signaling](#)

Application Details

Application Notes: WB: Concentration: 0.1-0.5 µg/mL, Tested Species: Human, Mouse, Rat
IHC-P: Concentration: 0.5-1 µg/mL, Tested Species: Human, Mouse, Rat, Epitope Retrieval by Heat: Boiling the paraffin sections in 10 mM citrate buffer, pH 6.0, for 20 mins is required for the staining of formalin/paraffin sections.
Notes: Tested Species: Species with positive results. Other applications have not been tested.
Optimal dilutions should be determined by end users.

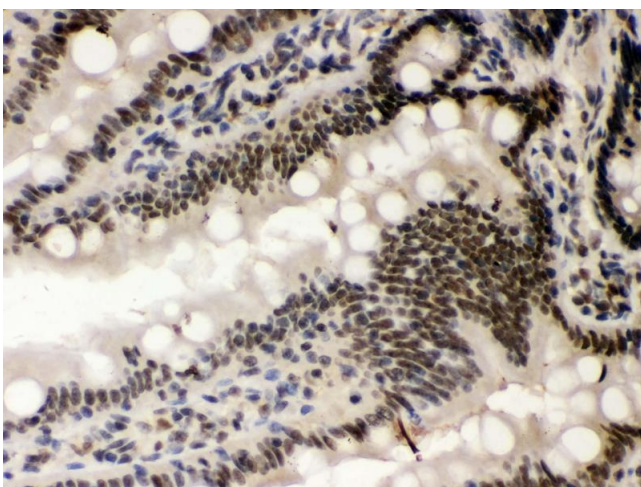
Application Details

Comment:	Antibody can be supported by chemiluminescence kit ABIN921124 in WB, supported by ABIN921231 in IHC(P).
Restrictions:	For Research Use only

Handling

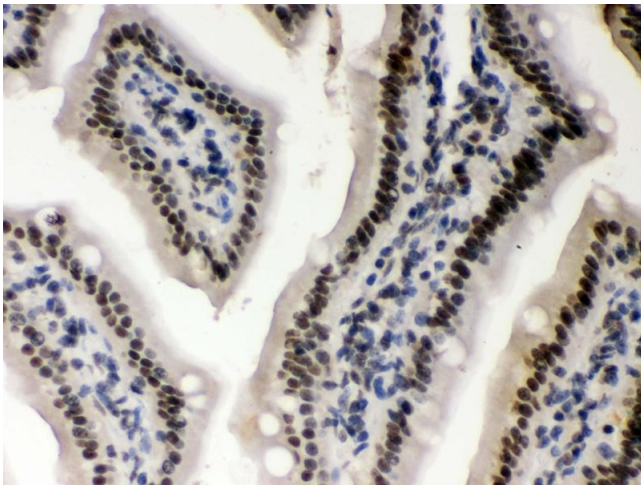
Format:	Lyophilized
Reconstitution:	Add 0.2 mL of distilled water will yield a concentration of 500 µg/mL.
Concentration:	500 µg/mL
Buffer:	Each vial contains 5 mg BSA, 0.9 mg NaCl, 0.2 mg Na ₂ HPO ₄ , 0.05 mg Sodium azide.
Preservative:	Sodium azide
Precaution of Use:	This product contains Sodium azide: a POISONOUS AND HAZARDOUS SUBSTANCE which should be handled by trained staff only.
Handling Advice:	Avoid repeated freezing and thawing.
Storage:	4 °C/-20 °C
Storage Comment:	At -20°C for one year. After reconstitution, at 4°C for one month. It can also be aliquotted and stored frozen at -20 °C for a longer time. Avoid repeated freezing and thawing.

Images



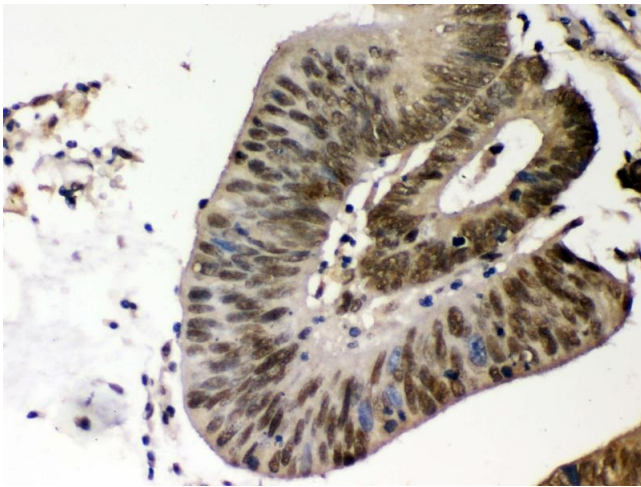
Immunohistochemistry

Image 1. Anti- CSNK1A1 Picoband antibody,IHC(P) IHC(P):
Rat Intestine Tissue



Immunohistochemistry

Image 2. Anti- CSNK1A1 Picoband antibody,IHC(P) IHC(P):
Mouse Intestine Tissue



Immunohistochemistry

Image 3. Anti- CSNK1A1 Picoband antibody,IHC(P) IHC(P):
Human Intestinal Cancer Tissue

Please check the [product details page](#) for more images. Overall 4 images are available for ABIN3042767.