

Datasheet for ABIN3042768
anti-CTBP2 antibody (AA 321-445)[Go to Product page](#)

4 Images

Overview

Quantity:	100 µg
Target:	CTBP2
Binding Specificity:	AA 321-445
Reactivity:	Human, Mouse, Rat
Host:	Rabbit
Clonality:	Polyclonal
Conjugate:	This CTBP2 antibody is un-conjugated
Application:	Western Blotting (WB), Immunohistochemistry (Paraffin-embedded Sections) (IHC (p))

Product Details

Purpose:	Rabbit IgG polyclonal antibody for C-terminal-binding protein 2(CTBP2) detection. Tested with WB, IHC-P in Human,Mouse,Rat.
Immunogen:	E.coli-derived human CTBP2 recombinant protein (Position: H321-Q445). Human CTBP2 shares 99.2% and 98.4% amino acid (aa) sequence identity with mouse and rat CTBP2, respectively.
Isotype:	IgG
Cross-Reactivity (Details):	No cross reactivity with other proteins.
Characteristics:	<p>Rabbit IgG polyclonal antibody for C-terminal-binding protein 2(CTBP2) detection. Tested with WB, IHC-P in Human,Mouse,Rat.</p> <p>Gene Name: C-terminal binding protein 2</p> <p>Protein Name: C-terminal-binding protein 2</p>
Purification:	Immunogen affinity purified.

Target Details

Target:	CTBP2
Alternative Name:	CTBP2 (CTBP2 Products)
Background:	<p>The E1a region of group C adenoviruses encodes 2 nearly identical proteins that are largely responsible for the oncogenic properties of adenoviruses. The CTBP1 protein binds to the C-terminal half of these E1A proteins. It's predicted that CTBP2 is a 445-amino acid protein and it is 72 % identical to CTBP1. The CTBP2 gene is mapped to chromosome 10q26.13. CTBP2 is a mammalian corepressor that targets diverse transcriptional regulators. It bounds the short medial portion of delta-EF1 containing the PLDLSL motif and it enhances transrepression activity of delta-EF1.</p> <p>Synonyms: C terminal binding protein 2 antibody C-terminal-binding protein 2 antibody CtBP2 antibody CTBP2_HUMAN antibody ribeye antibody</p>
Gene ID:	1488
UniProt:	P56545

Application Details

Application Notes:	<p>WB: Concentration: 0.1-0.5 µg/mL, Tested Species: Human</p> <p>IHC-P: Concentration: 0.5-1 µg/mL, Tested Species: Human, Mouse, Rat, Epitope Retrieval by Heat: Boiling the paraffin sections in 10 mM citrate buffer, pH 6.0, for 20 mins is required for the staining of formalin/paraffin sections.</p> <p>Notes: Tested Species: Species with positive results. Other applications have not been tested. Optimal dilutions should be determined by end users.</p>
Comment:	Antibody can be supported by chemiluminescence kit ABIN921124 in WB, supported by ABIN921231 in IHC(P).
Restrictions:	For Research Use only

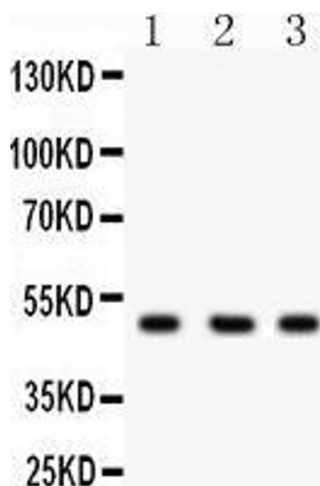
Handling

Format:	Lyophilized
Reconstitution:	Add 0.2 mL of distilled water will yield a concentration of 500 µg/mL.
Concentration:	500 µg/mL
Buffer:	Each vial contains 5 mg BSA, 0.9 mg NaCl, 0.2 mg Na2HPO4, 0.05 mg Sodium azide.

Handling

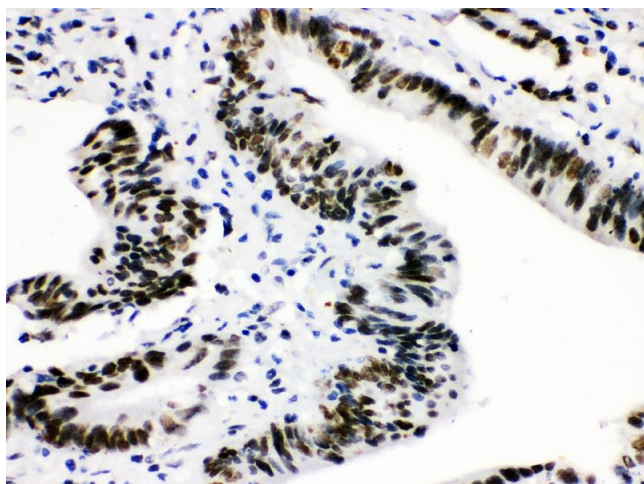
Preservative:	Sodium azide
Precaution of Use:	This product contains Sodium azide: a POISONOUS AND HAZARDOUS SUBSTANCE which should be handled by trained staff only.
Handling Advice:	Avoid repeated freezing and thawing.
Storage:	4 °C/-20 °C
Storage Comment:	At -20°C for one year. After reconstitution, at 4°C for one month. It can also be aliquotted and stored frozen at -20 °C for a longer time. Avoid repeated freezing and thawing.

Images



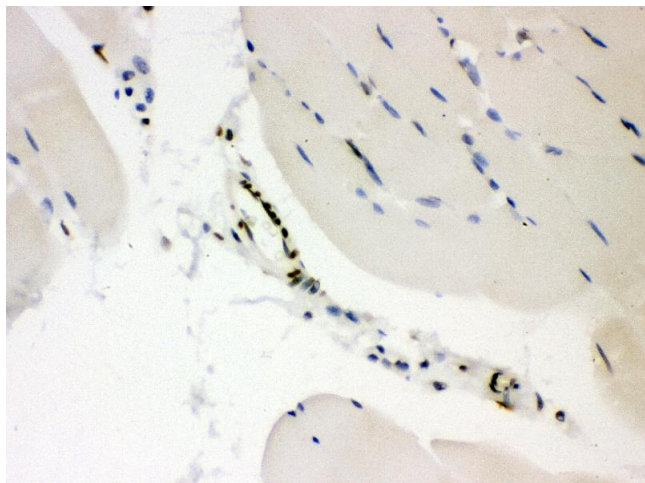
Western Blotting

Image 1.



Immunohistochemistry

Image 2. Anti-CTBP2 Picoband antibody, IHC(P) IHC(P):
Human Intestinal Cancer Tissue



Immunohistochemistry

Image 3. Anti-CTBP2 Picoband antibody, IHC(P) IHC(P):
Mouse Skeletal Muscle Tissue

Please check the [product details page](#) for more images. Overall 4 images are available for ABIN3042768.