

Datasheet for ABIN3042771
anti-CTGF antibody (AA 58-349)

2 Images

18 Publications

[Go to Product page](#)

Overview

Quantity:	100 µg
Target:	CTGF
Binding Specificity:	AA 58-349
Reactivity:	Human, Rat
Host:	Rabbit
Clonality:	Polyclonal
Conjugate:	This CTGF antibody is un-conjugated
Application:	Western Blotting (WB), Immunohistochemistry (Paraffin-embedded Sections) (IHC (p))

Product Details

Purpose:	Rabbit IgG polyclonal antibody for Connective tissue growth factor(CTGF) detection. Tested with WB, IHC-P in Human,Rat.
Immunogen:	E.coli-derived human CTGF recombinant protein (Position: R58-A349). Human CTGF shares 95.5% and 95.9% amino acid (aa) sequence identity with mouse and rat CTGF, respectively.
Isotype:	IgG
Cross-Reactivity (Details):	No cross reactivity with other proteins.
Characteristics:	<p>Rabbit IgG polyclonal antibody for Connective tissue growth factor(CTGF) detection. Tested with WB, IHC-P in Human,Rat.</p> <p>Gene Name: connective tissue growth factor</p> <p>Protein Name: Connective tissue growth factor</p>
Purification:	Immunogen affinity purified.

Target Details

Target:	CTGF
Alternative Name:	CTGF (CTGF Products)
Background:	<p>CTGF, also known as CCN2 or connective tissue growth factor, is a matricellular protein of the CCN family of extracellular matrix-associated heparin-binding proteins (see also CCN intercellular signaling protein). CTGF has important roles in many biological processes, including cell adhesion, migration, proliferation, angiogenesis, skeletal development, and tissue wound repair, and is critically involved in fibrotic disease and several forms of cancers. The protein encoded by this gene is a mitogen that is secreted by vascular endothelial cells. And the encoded protein plays a role in chondrocyte proliferation and differentiation, cell adhesion in many cell types, and is related to platelet-derived growth factor. Certain polymorphisms in this gene have been linked with a higher incidence of systemic sclerosis.</p> <p>Synonyms: CCN 2 antibody CCN family member 2 antibody CCN2 antibody Connective Tissue Growth Factor antibody CTGF antibody CTGF_HUMAN antibody Hcs 24 antibody Hcs24 antibody Hypertrophic chondrocyte specific protein 24 antibody Hypertrophic chondrocyte-specific gene product 24 antibody Hypertrophic chondrocyte-specific protein 24 antibody IBP-8 antibody IGF-binding protein 8 antibody IGFBP-8 antibody IGFBP8 antibody Insulin like Growth Factor Binding Protein 8 antibody Insulin-like Growth Factor-Binding Protein 8 antibody MGC102839 antibody NOV 2 antibody NOV2 antibody</p>
Gene ID:	1490
UniProt:	P29279
Pathways:	Regulation of Lipid Metabolism by PPARalpha , Positive Regulation of Endopeptidase Activity , Growth Factor Binding

Application Details

Application Notes:	<p>WB: Concentration: 0.1-0.5 µg/mL, Tested Species: Human, Rat</p> <p>IHC-P: Concentration: 0.5-1 µg/mL, Tested Species: Human, Epitope Retrieval by Heat: Boiling the paraffin sections in 10 mM citrate buffer, pH 6.0, for 20 mins is required for the staining of formalin/paraffin sections.</p> <p>Notes: Tested Species: Species with positive results. Other applications have not been tested. Optimal dilutions should be determined by end users.</p>
Comment:	Antibody can be supported by chemiluminescence kit ABIN921124 in WB, supported by ABIN921231 in IHC(P).

Application Details

Restrictions: For Research Use only

Handling

Format: Lyophilized

Reconstitution: Add 0.2 mL of distilled water will yield a concentration of 500 µg/mL.

Concentration: 500 µg/mL

Buffer: Each vial contains 5 mg BSA, 0.9 mg NaCl, 0.2 mg Na₂HPO₄, 0.05 mg Sodium azide.

Preservative: Sodium azide

Precaution of Use: This product contains Sodium azide: a POISONOUS AND HAZARDOUS SUBSTANCE which should be handled by trained staff only.

Handling Advice: Avoid repeated freezing and thawing.

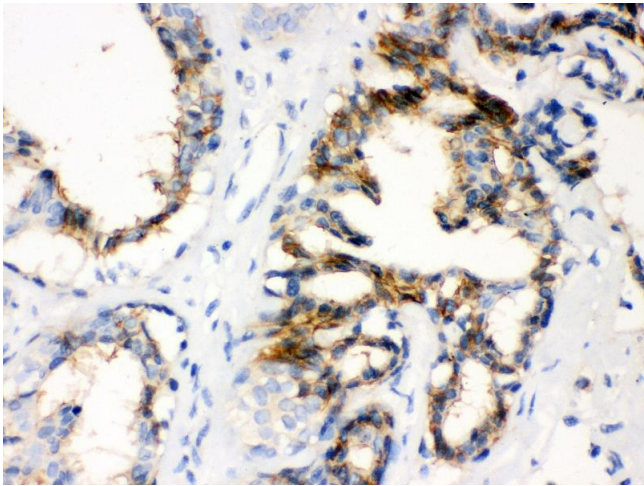
Storage: 4 °C/-20 °C

Storage Comment: At -20°C for one year. After reconstitution, at 4°C for one month.
It can also be aliquotted and stored frozen at -20 °C for a longer time. Avoid repeated freezing and thawing.

Publications

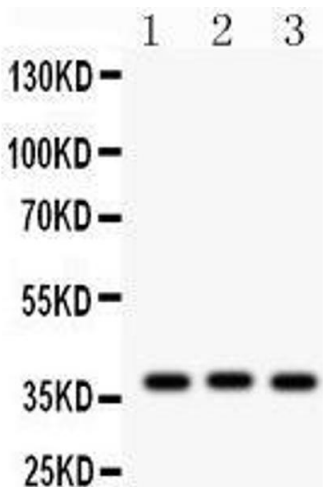
Product cited in: Li, Byrd, Doh, Dixon, Lee, Tiwari, Ecelbarger: "Absence of renal enlargement in fructose-fed proximal-tubule-select insulin receptor (IR), insulin-like-growth factor receptor (IGF1R) double knockout mice." in: **Physiological reports**, Vol. 4, Issue 23, (2018) ([PubMed](#)).

There are more publications referencing this product on: [Product page](#)



Immunohistochemistry

Image 1. Anti- CTGF Picoband antibody, IHC(P) IHC(P):
Human Mammary Cancer Tissue



Western Blotting

Image 2.