



[Go to Product page](#)

Datasheet for ABIN3042820
anti-PLTP antibody (Middle Region)

2 Images

Overview

Quantity:	100 µg
Target:	PLTP
Binding Specificity:	AA 256-271, Middle Region
Reactivity:	Human
Host:	Rabbit
Clonality:	Polyclonal
Conjugate:	This PLTP antibody is un-conjugated
Application:	Western Blotting (WB), Immunohistochemistry (Paraffin-embedded Sections) (IHC (p))

Product Details

Purpose:	Rabbit IgG polyclonal antibody for Phospholipid transfer protein(PLTP) detection. Tested with WB, IHC-P in Human.
Immunogen:	A synthetic peptide corresponding to a sequence in the middle region of human PLTP(256-271aa QLQEEERMVYVAFSEF).
Sequence:	QLQEEERMVY VAFSEF
Isotype:	IgG
Cross-Reactivity (Details):	No cross reactivity with other proteins.
Characteristics:	Rabbit IgG polyclonal antibody for Phospholipid transfer protein(PLTP) detection. Tested with WB, IHC-P in Human. Gene Name: phospholipid transfer protein Protein Name: Phospholipid transfer protein

Product Details

Purification: Immunogen affinity purified.

Target Details

Target: PLTP

Alternative Name: PLTP ([PLTP Products](#))

Background: Phospholipid transfer protein(PLTP), also known as lipid transfer protein II is a protein that in humans is encoded by the PLTP gene. This gene is mapped to 20q13.12. The protein encoded by this gene is one of at least two lipid transfer proteins found in human plasma. The encoded protein transfers phospholipids from triglyceride-rich lipoproteins to high density lipoprotein(HDL). In addition to regulating the size of HDL particles, this protein may be involved in cholesterol metabolism. At least two transcript variants encoding different isoforms have been found for this gene.

Synonyms: BPI fold containing family E antibody|BPIFE antibody|HDLQC9 antibody|High density lipoprotein cholesterol level quantitative trait locus 9, included antibody|Lipid transfer protein II antibody|OD107 antibody|Phospholipid transfer protein antibody|Plasma phospholipid transfer protein antibody|PLTP antibody|PLTP_HUMAN antibody

UniProt: [P55058](#)

Pathways: [Lipid Metabolism](#)

Application Details

Application Notes: WB: Concentration: 0.1-0.5 µg/mL, Tested Species: Human
IHC-P: Concentration: 0.5-1 µg/mL, Tested Species: Human, Epitope Retrieval by Heat: Boiling the paraffin sections in 10 mM citrate buffer, pH 6.0, for 20 mins is required for the staining of formalin/paraffin sections.
Notes: Tested Species: Species with positive results. Predicted Species: Species predicted to be fit for the product based on sequence similarities. Other applications have not been tested.
Optimal dilutions should be determined by end users.

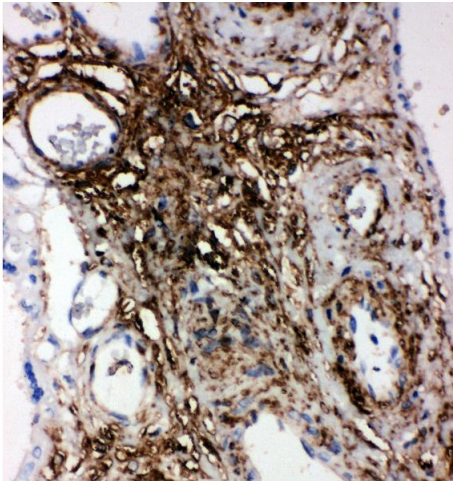
Comment: Antibody can be supported by chemiluminescence kit ABIN921124 in WB, supported by ABIN921231 in IHC(P).

Restrictions: For Research Use only

Handling

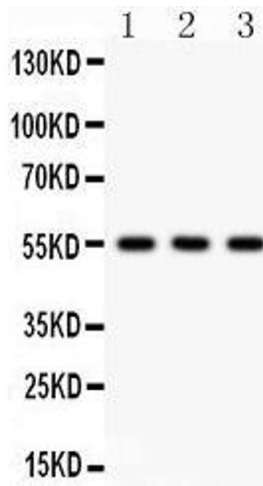
Format:	Lyophilized
Reconstitution:	Add 0.2 mL of distilled water will yield a concentration of 500 µg/mL.
Concentration:	500 µg/mL
Buffer:	Each vial contains 5 mg BSA, 0.9 mg NaCl, 0.2 mg Na ₂ HPO ₄ , 0.05 mg Thimerosal, 0.05 mg Sodium azide.
Preservative:	Thimerosal (Merthiolate), Sodium azide
Precaution of Use:	This product contains Sodium azide and Thimerosal (Merthiolate): POISONOUS AND HAZARDOUS SUBSTANCES which should be handled by trained staff only.
Handling Advice:	Avoid repeated freezing and thawing.
Storage:	4 °C/-20 °C
Storage Comment:	At -20°C for one year. After reconstitution, at 4°C for one month. It can also be aliquotted and stored frozen at -20 °C for a longer time. Avoid repeated freezing and thawing.
Expiry Date:	12 months

Images



Immunohistochemistry

Image 1. Anti-PLTP antibody, IHC(P) IHC(P): Human Placenta Tissue



Western Blotting

Image 2. Anti-PLTP antibody, Western blotting All lanes: Anti PLTP at 0.5ug/ml Lane 1: MCF-7 Whole Cell Lysate at 40ug Lane 2: RAJI Whole Cell Lysate at 40ug Lane 3: HELA Whole Cell Lysate at 40ug Predicted bind size: 55KD Observed bind size: 55KD