

Datasheet for ABIN3042842
anti-Leupaxin antibody (N-Term)

3 Images

[Go to Product page](#)

Overview

Quantity:	100 µg
Target:	Leupaxin (LPXN)
Binding Specificity:	AA 115-129, N-Term
Reactivity:	Human, Mouse, Rat
Host:	Rabbit
Clonality:	Polyclonal
Conjugate:	This Leupaxin antibody is un-conjugated
Application:	Western Blotting (WB), Immunohistochemistry (Paraffin-embedded Sections) (IHC (p))

Product Details

Purpose:	Rabbit IgG polyclonal antibody for Leupaxin(LPXN) detection. Tested with WB, IHC-P in Human,Mouse,Rat.
Immunogen:	A synthetic peptide corresponding to a sequence at the N-terminus of human Leupaxin(115-129aa KKHLDPKQDHKASLD), different from the related rat sequence by two amino acids, and from the related mouse sequence by three amino acids.
Sequence:	KKHLDPKQDH KASLD
Isotype:	IgG
Cross-Reactivity (Details):	No cross reactivity with other proteins.
Characteristics:	Rabbit IgG polyclonal antibody for Leupaxin(LPXN) detection. Tested with WB, IHC-P in Human,Mouse,Rat. Gene Name: leupaxin

Product Details

Protein Name: Leupaxin

Purification: Immunogen affinity purified.

Target Details

Target: Leupaxin (LPXN)

Alternative Name: LPXN ([LPXN Products](#))

Background: Leupaxin is a protein that in humans is encoded by the LPXN gene. This gene is mapped to 11q12.1. The product encoded by this gene is preferentially expressed in hematopoietic cells and belongs to the paxillin protein family. Similar to other members of this focal-adhesion-associated adaptor-protein family, it has four leucine-rich LD-motifs in the N-terminus and four LIM domains in the C-terminus. It may function in cell type-specific signaling by associating with PYK2, a member of focal adhesion kinase family. As a substrate for a tyrosine kinase in lymphoid cells, this protein may also function in, and be regulated by, tyrosine kinase activity.

Synonyms: LDLP antibody|LDPL antibody|LPXN antibody

UniProt: [O60711](#)

Application Details

Application Notes: WB: Concentration: 0.1-0.5 µg/mL, Tested Species: Human, Rat
IHC-P: Concentration: 0.5-1 µg/mL, Tested Species: Human, Mouse, Rat, Epitope Retrieval by Heat: Boiling the paraffin sections in 10 mM citrate buffer, pH 6.0, for 20 mins is required for the staining of formalin/paraffin sections.
Notes: Tested Species: Species with positive results. Predicted Species: Species predicted to be fit for the product based on sequence similarities. Other applications have not been tested.
Optimal dilutions should be determined by end users.

Comment: Antibody can be supported by chemiluminescence kit ABIN921124 in WB, supported by ABIN921231 in IHC(P).

Restrictions: For Research Use only

Handling

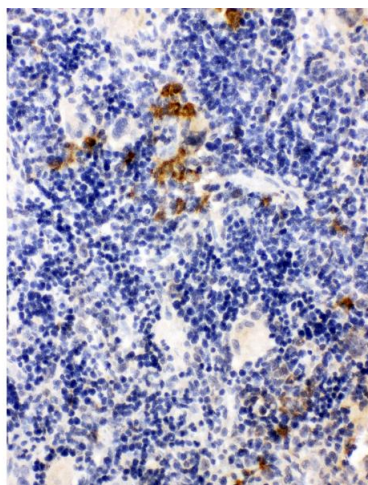
Format: Lyophilized

Reconstitution: Add 0.2 mL of distilled water will yield a concentration of 500 µg/mL.

Handling

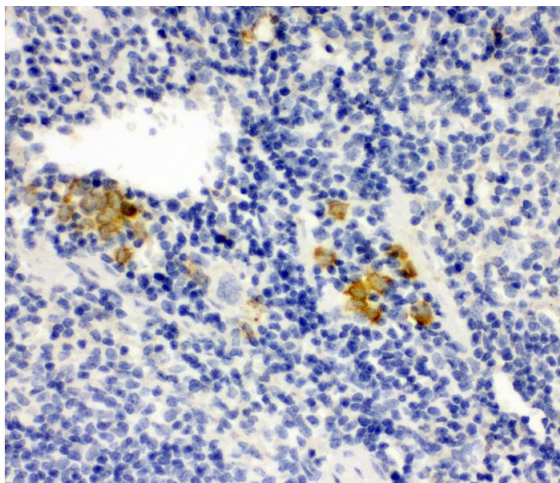
Concentration:	500 µg/mL
Buffer:	Each vial contains 5 mg BSA, 0.9 mg NaCl, 0.2 mg Na ₂ HPO ₄ , 0.05 mg Thimerosal, 0.05 mg Sodium azide.
Preservative:	Thimerosal (Merthiolate), Sodium azide
Precaution of Use:	This product contains Sodium azide and Thimerosal (Merthiolate): POISONOUS AND HAZARDOUS SUBSTANCES which should be handled by trained staff only.
Handling Advice:	Avoid repeated freezing and thawing.
Storage:	4 °C/-20 °C
Storage Comment:	At -20°C for one year. After reconstitution, at 4°C for one month. It can also be aliquotted and stored frozen at -20 °C for a longer time. Avoid repeated freezing and thawing.
Expiry Date:	12 months

Images



Immunohistochemistry

Image 1. Anti-Leupaxin antibody, IHC(P) IHC(P): Rat Spleen Tissue



Immunohistochemistry

Image 2. Anti-Leupaxin antibody, IHC(P) IHC(P): Mouse Spleen Tissue



Western Blotting

Image 3. Anti-Leupaxin antibody, Western blotting Lane 1: Rat Thymus Tissue Lysate Lane 2: JURKAT Cell Lysate