

Datasheet for ABIN3042860
anti-RGS14 antibody (C-Term)



[Go to Product page](#)

1 Image

Overview

Quantity:	100 µg
Target:	RGS14
Binding Specificity:	AA 359-372, C-Term
Reactivity:	Human, Rat
Host:	Rabbit
Clonality:	Polyclonal
Conjugate:	This RGS14 antibody is un-conjugated
Application:	Western Blotting (WB)

Product Details

Purpose:	Rabbit IgG polyclonal antibody for Regulator of G-protein signaling 14(RGS14) detection. Tested with WB in Human,Mouse,Rat.
Immunogen:	A synthetic peptide corresponding to a sequence at the C-terminus of human RGS14(359-372aa CTVLADQEVRLLENR), identical to the related mouse and rat sequences.
Sequence:	CTVLADQEVRLLENR
Isotype:	IgG
Cross-Reactivity (Details):	<p>Predicted Cross Reactivity: mouse</p> <p>No cross reactivity with other proteins.</p> <p>Predicted Cross Reactivity: Species predicted to be fit for the product based on sequence similarities.</p>
Characteristics:	Rabbit IgG polyclonal antibody for Regulator of G-protein signaling 14(RGS14) detection. Tested

Product Details

with WB in Human,Mouse,Rat.

Gene Name: regulator of G-protein signaling 14

Protein Name: Regulator of G-protein signaling 14

Purification: Immunogen affinity purified.

Target Details

Target: RGS14

Alternative Name: RGS14 ([RGS14 Products](#))

Background: Regulator of G-protein signaling 14, also called RGS14, is a protein that in humans is encoded by the RGS14 gene. This gene encodes a member of the regulator of G-protein signaling family. By genomic sequence analysis, this gene is mapped to chromosome 5q35.3. The protein attenuates the signaling activity of G-proteins by binding, through its GoLoco domain, to specific types of activated, GTP-bound G alpha subunits. Acting as a GTPase activating protein(GAP), the protein increases the rate of conversion of the GTP to GDP. This hydrolysis allows the G alpha subunits to bind G beta/gamma subunit heterodimers, forming inactive G-protein heterotrimers, thereby terminating the signal.

Synonyms: Highly similar to rap1/rap2 interacting protein antibody|OTTHUMP00000223586 antibody|OTTHUMP00000223587 antibody|Regulation of G protein signaling 14 antibody|Regulator of G protein signaling 14 antibody|Regulator of G protein signalling 14 antibody|Regulator of G-protein signaling 14 antibody|RGS 14 antibody|RGS14 antibody|RGS14_HUMAN antibody

UniProt: [O43566](#)

Pathways: [Myometrial Relaxation and Contraction](#), [Regulation of G-Protein Coupled Receptor Protein Signaling](#), [Platelet-derived growth Factor Receptor Signaling](#)

Application Details

Application Notes: WB: Concentration: 0.1-0.5 µg/mL, Tested Species: Human, Rat, Predicted Species: Mouse

Notes: Tested Species: Species with positive results. Predicted Species: Species predicted to be fit for the product based on sequence similarities.

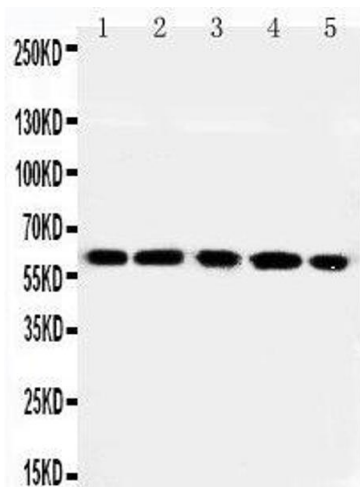
Other applications have not been tested. Optimal dilutions should be determined by end users.

Comment: Antibody can be supported by chemiluminescence kit ABIN921124 in WB.

Application Details

Restrictions:	For Research Use only
Handling	
Format:	Lyophilized
Reconstitution:	Add 0.2 mL of distilled water will yield a concentration of 500 µg/mL.
Concentration:	500 µg/mL
Buffer:	Each vial contains 5 mg BSA, 0.9 mg NaCl, 0.2 mg Na ₂ HPO ₄ , 0.05 mg Thimerosal, 0.05 mg Sodium azide.
Preservative:	Thimerosal (Merthiolate), Sodium azide
Precaution of Use:	This product contains Sodium azide and Thimerosal (Merthiolate): POISONOUS AND HAZARDOUS SUBSTANCES which should be handled by trained staff only.
Handling Advice:	Avoid repeated freezing and thawing.
Storage:	4 °C/-20 °C
Storage Comment:	At -20°C for one year. After reconstitution, at 4°C for one month. It can also be aliquotted and stored frozen at -20 °C for a longer time. Avoid repeated freezing and thawing.
Expiry Date:	12 months

Images



Western Blotting

Image 1. Anti-RGS14 antibody, Western blotting Lane 1: Rat Thymus Tissue Lysate Lane 2: Rat Spleen Tissue Lysate Lane 3: RAJI Cell Lysate Lane 4: CEM Cell Lysate Lane 5: JURKAT Cell Lysate