

Datasheet for ABIN3042864  
**anti-FABP6 antibody (N-Term)**

## 3 Images

[Go to Product page](#)

## Overview

Quantity:	100 µg
Target:	FABP6
Binding Specificity:	AA 15-33, N-Term
Reactivity:	Human
Host:	Rabbit
Clonality:	Polyclonal
Application:	Western Blotting (WB), Immunohistochemistry (Paraffin-embedded Sections) (IHC (p))

## Product Details

Purpose:	Rabbit IgG polyclonal antibody for Gastrotropin(FABP6) detection. Tested with WB, IHC-P in Human.
Immunogen:	A synthetic peptide corresponding to a sequence at the N-terminus of human FABP6(15-33aa YDEFMKLLGISSDVIEKAR).
Sequence:	YDEFMKLLGI SSDVIEKAR
Isotype:	IgG
Cross-Reactivity (Details):	No cross reactivity with other proteins.
Characteristics:	Rabbit IgG polyclonal antibody for Gastrotropin(FABP6) detection. Tested with WB, IHC-P in Human. Gene Name: fatty acid binding protein 6, ileal Protein Name: Gastrotropin
Purification:	Immunogen affinity purified.

## Target Details

Target:	FABP6
Alternative Name:	FABP6 ( <a href="#">FABP6 Products</a> )
Background:	<p>Fatty acid binding protein 6, ileal, also called FABP6 or ILBP is a protein which in humans is encoded by the FABP6 gene. Ileal lipid-binding protein(ILBP) is a member of a family of intracellular fatty acid, retinoid, and bile acid-binding proteins. This gene is mapped to 5q33.3. Fatty acid binding proteins are a family of small, highly conserved, cytoplasmic proteins that bind long-chain fatty acids and other hydrophobic ligands. FABP6 and FABP1(the liver fatty acid binding protein) are also able to bind bile acids. It is though that FABPs roles include fatty acid uptake, transport, and metabolism.</p> <p>Synonyms: Fabp6 antibody FABP6_HUMAN antibody Fatty acid binding protein 6, ileal(gastrotropin) antibody Fatty acid-binding protein 6 antibody Gastrotropin antibody GT antibody I 15P antibody I BABP antibody I BALB antibody I BAP antibody I-15P antibody I-BABP antibody I15P antibody IBABP antibody IBALB antibody IBAP antibody ILBP antibody ILBP3 antibody Ileal lipid binding protein antibody Ileal lipid-binding protein antibody ILLBP antibody Intestinal 15 kDa protein antibody Intestinal bile acid binding protein antibody Intestinal bile acid-binding protein antibody</p>
UniProt:	<a href="#">P51161</a>

## Application Details

Application Notes:	<p>WB: Concentration: 0.1-0.5 µg/mL, Tested Species: Human</p> <p>IHC-P: Concentration: 0.5-1 µg/mL, Tested Species: Human, Epitope Retrieval by Heat: Boiling the paraffin sections in 10 mM citrate buffer, pH 6.0, for 20 mins is required for the staining of formalin/paraffin sections.</p> <p>Notes: Tested Species: Species with positive results. Predicted Species: Species predicted to be fit for the product based on sequence similarities. Other applications have not been tested.</p> <p>Optimal dilutions should be determined by end users.</p>
Comment:	Antibody can be supported by chemiluminescence kit ABIN921124 in WB, supported by ABIN921231 in IHC(P).
Restrictions:	For Research Use only

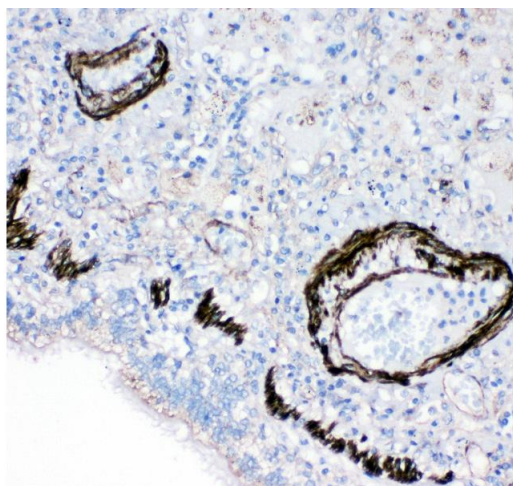
## Handling

Format:	Lyophilized
---------	-------------

## Handling

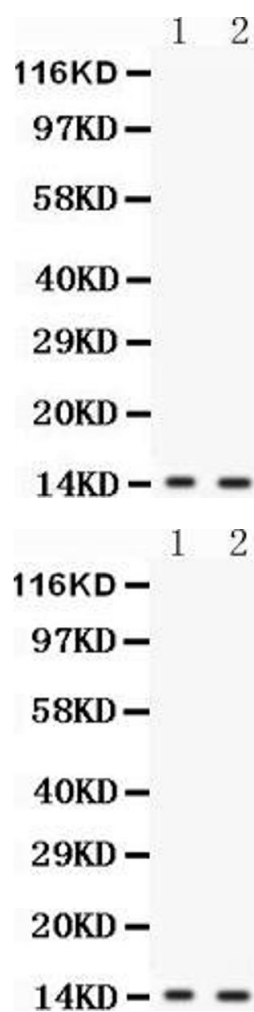
Reconstitution:	Add 0.2 mL of distilled water will yield a concentration of 500 µg/mL.
Concentration:	500 µg/mL
Buffer:	Each vial contains 5 mg BSA, 0.9 mg NaCl, 0.2 mg Na <sub>2</sub> HPO <sub>4</sub> , 0.05 mg Thimerosal, 0.05 mg Sodium azide.
Preservative:	Thimerosal (Merthiolate), Sodium azide
Precaution of Use:	This product contains Sodium azide and Thimerosal (Merthiolate): POISONOUS AND HAZARDOUS SUBSTANCES which should be handled by trained staff only.
Handling Advice:	Avoid repeated freezing and thawing.
Storage:	4 °C/-20 °C
Storage Comment:	At -20°C for one year. After reconstitution, at 4°C for one month. It can also be aliquotted and stored frozen at -20 °C for a longer time. Avoid repeated freezing and thawing.
Expiry Date:	12 months

## Images



### Immunohistochemistry

**Image 1.** Anti-FABP6 antibody, IHC(P) IHC(P): Human Lung Cancer Tissue



**Western Blotting**

**Image 2.** Anti-FABP6 antibody, Western blotting All lanes:  
Anti FABP6 at 0.5ug/ml Lane 1: COLO320 Whole Cell Lysate  
at 40ug Lane 2: SW620 Whole Cell Lysate at 40ug Predicted  
bind size: 14KD Observed bind size: 14KD

**Western Blotting**

**Image 3.** Anti-FABP6 antibody, Western blottingAll lanes:  
Anti FABP6 at 0.5ug/ml Lane 1: COLO320 Whole Cell Lysate  
at 40ug Lane 2: SW620 Whole Cell Lysate at 40ugPredicted  
bind size: 14KDObserved bind size: 14KD