

Datasheet for ABIN3042903  
**anti-Aquaporin 10 antibody (C-Term)**[Go to Product page](#)

## 1 Image

## Overview

Quantity:	100 µg
Target:	Aquaporin 10 (AQP10)
Binding Specificity:	AA 286-301, C-Term
Reactivity:	Human
Host:	Rabbit
Clonality:	Polyclonal
Conjugate:	This Aquaporin 10 antibody is un-conjugated
Application:	Western Blotting (WB)

## Product Details

Purpose:	Rabbit IgG polyclonal antibody for Aquaporin-10(AQP10) detection. Tested with WB in Human.
Immunogen:	A synthetic peptide corresponding to a sequence at the C-terminus of human Aquaporin 10(286-301aa SELETPASAQMLECKL).
Sequence:	SELETPASAQ MLECKL
Isotype:	IgG
Cross-Reactivity (Details):	No cross reactivity with other proteins.
Characteristics:	Rabbit IgG polyclonal antibody for Aquaporin-10(AQP10) detection. Tested with WB in Human. Gene Name: aquaporin 10 Protein Name: Aquaporin-10
Purification:	Immunogen affinity purified.

## Target Details

Target:	Aquaporin 10 (AQP10)
Alternative Name:	AQP10 ( <a href="#">AQP10 Products</a> )
Background:	<p>AQP10 was identified in human small intestine. This gene encoded a 264-amino-acid protein with high sequence identity with AQP3(53 % ), 9(52 %), and 7(43 %). These AQPs constitute one subfamily of AQP family that is differentiated from the other subfamily of AQP(AQP0, 1, 2, 4, 5, 6, and 8) by sequence homology. Northern blot analysis revealed expression of a 2.3-kb AQP10 transcript in jejunum but not liver. RNase protection analysis detected nearly exclusive expression in duodenum and jejunum. In situ hybridization analysis demonstrated highest expression of AQP10 in absorptive epithelial cells at the tips of villi in the jejunum. SDS-PAGE analysis showed expression of a 28-kD AQP10 protein, similar to its predicted size as well as to that of the other AQPs. Functional analysis indicated that cells expressing AQP10 are permeable to relatively low amounts of water, but, unlike AQP3, AQP7, and AQP9, are not permeable to urea or glycerol.</p> <p>Synonyms: AQP 10 antibody AQP10 antibody AQPA Human antibody Aquaporin10 antibody Small intestine aquaporin antibody</p>

## Application Details

Application Notes:	<p>WB: Concentration: 0.1-0.5 µg/mL, Tested Species: Human, The detection limit for AQP10 is approximately 3 ng/lane under reducing conditions.</p> <p>Notes: Tested Species: Species with positive results. Predicted Species: Species predicted to be fit for the product based on sequence similarities.</p> <p>Other applications have not been tested. Optimal dilutions should be determined by end users.</p>
Comment:	Antibody can be supported by chemiluminescence kit ABIN921124 in WB.
Restrictions:	For Research Use only

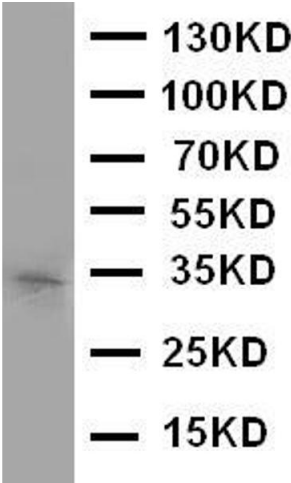
## Handling

Format:	Lyophilized
Reconstitution:	Add 0.2 mL of distilled water will yield a concentration of 500 µg/mL.
Concentration:	500 µg/mL
Buffer:	Each vial contains 5 mg BSA, 0.9 mg NaCl, 0.2 mg Na2HPO4, 0.05 mg Thimerosal, 0.05 mg Sodium azide.

Handling

Preservative:	Thimerosal (Merthiolate), Sodium azide
Precaution of Use:	This product contains Sodium azide and Thimerosal (Merthiolate): POISONOUS AND HAZARDOUS SUBSTANCES which should be handled by trained staff only.
Handling Advice:	Avoid repeated freezing and thawing.
Storage:	4 °C/-20 °C
Storage Comment:	At -20°C for one year. After reconstitution, at 4°C for one month. It can also be aliquotted and stored frozen at -20 °C for a longer time. Avoid repeated freezing and thawing.
Expiry Date:	12 months

Images



**Western Blotting**

**Image 1.** Anti-Aquaporin 10 antibody, Western blottingWB: COL0320 Cell Lysate