

Datasheet for ABIN3042909
anti-SPARCL1 antibody (C-Term)

3 Images

[Go to Product page](#)

Overview

Quantity:	100 µg
Target:	SPARCL1
Binding Specificity:	AA 649-664, C-Term
Reactivity:	Human, Mouse, Rat
Host:	Rabbit
Clonality:	Polyclonal
Application:	Western Blotting (WB), Immunohistochemistry (Paraffin-embedded Sections) (IHC (p))

Product Details

Purpose:	Rabbit IgG polyclonal antibody for SPARC-like protein 1 (SPARCL1) detection. Tested with WB, IHC-P in Human, Mouse, Rat.
Immunogen:	A synthetic peptide corresponding to a sequence at the C-terminus of human SPARCL1 (649-664aa HCFGIKEEDIDENLLF), identical to the related mouse and rat sequences.
Sequence:	HCFGIKEEDI DENLLF
Isotype:	IgG
Cross-Reactivity (Details):	No cross reactivity with other proteins.
Characteristics:	Rabbit IgG polyclonal antibody for SPARC-like protein 1 (SPARCL1) detection. Tested with WB, IHC-P in Human, Mouse, Rat. Gene Name: SPARC-like 1 (hevin) Protein Name: SPARC-like protein 1
Purification:	Immunogen affinity purified.

Target Details

Target:	SPARCL1
Alternative Name:	SPARCL1 (SPARCL1 Products)
Background:	<p>SPARCL1 (SPARC-Like Protein 1), also known as HEVIN, is a protein that in humans is encoded by the SPARCL1 gene. The cells in high endothelial venules (HEVs) in lymphoid tissues have a plump, almost cuboidal, appearance and support high levels of lymphocyte extravasation from blood, possibly due to the presence of desmosome-like junctions rather than tight junctions in the HEVs. In chronic inflammation, the activated endothelium of nonlymphoid tissues acquires an HEV-like morphology and function. Hevin is highly expressed in HEV and is thought to contribute to the induction or maintenance of features of the HEV endothelium that facilitate lymphocyte migration (Girard and Springer, 1995).</p> <p>Synonyms: Ecm2 antibody Extracellular matrix protein 2 antibody Hevin antibody High endothelial venule protein antibody MAST 9 antibody mast9 antibody Matrix glycoprotein Sc1 antibody PIG33 antibody proliferation inducing protein 33 antibody RAGS1 antigen antibody SC1 antibody SPARC like 1 antibody SPARC-like protein 1 antibody Sparcl1 antibody SPRL1_HUMAN antibody</p>
UniProt:	Q14515

Application Details

Application Notes:	<p>WB: Concentration: 0.1-0.5 µg/mL, Tested Species: Human, Mouse, Rat</p> <p>IHC-P: Concentration: 0.5-1 µg/mL, Tested Species: Human, Rat, Predicted Species: Mouse, Epitope Retrieval by Heat: Boiling the paraffin sections in 10 mM citrate buffer, pH 6.0, for 20 mins is required for the staining of formalin/paraffin sections.</p> <p>Notes: Tested Species: Species with positive results. Predicted Species: Species predicted to be fit for the product based on sequence similarities. Other applications have not been tested. Optimal dilutions should be determined by end users.</p>
Comment:	Antibody can be supported by chemiluminescence kit ABIN921124 in WB, supported by ABIN921231 in IHC(P).
Restrictions:	For Research Use only

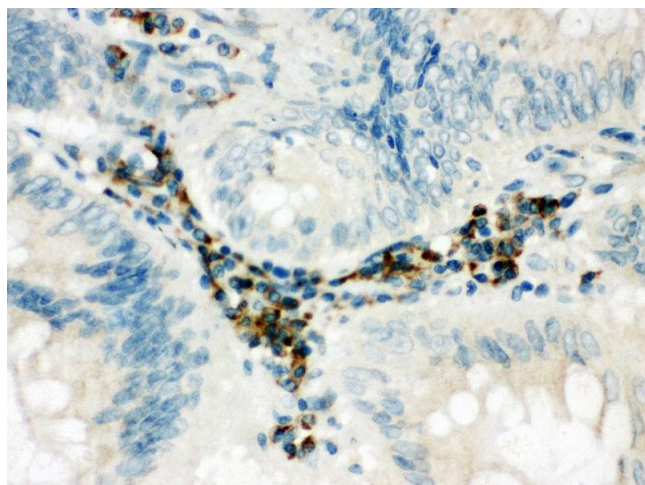
Handling

Format:	Lyophilized
Reconstitution:	Add 0.2 mL of distilled water will yield a concentration of 500 µg/mL.

Handling

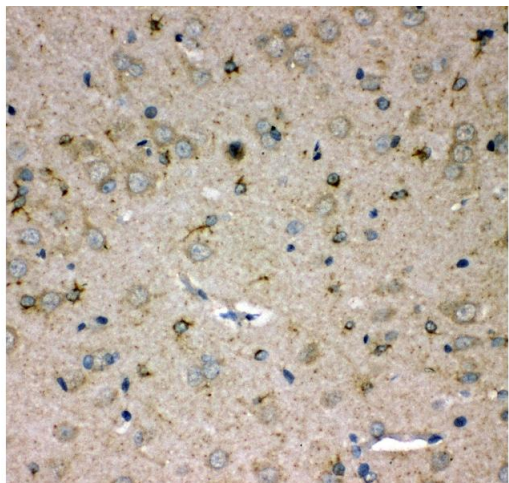
Concentration:	500 µg/mL
Buffer:	Each vial contains 5 mg BSA, 0.9 mg NaCl, 0.2 mg Na ₂ HPO ₄ , 0.05 mg Thimerosal, 0.05 mg Sodium azide.
Preservative:	Thimerosal (Merthiolate), Sodium azide
Precaution of Use:	This product contains Sodium azide and Thimerosal (Merthiolate): POISONOUS AND HAZARDOUS SUBSTANCES which should be handled by trained staff only.
Handling Advice:	Avoid repeated freezing and thawing.
Storage:	4 °C/-20 °C
Storage Comment:	At -20°C for one year. After reconstitution, at 4°C for one month. It can also be aliquotted and stored frozen at -20 °C for a longer time. Avoid repeated freezing and thawing.
Expiry Date:	12 months

Images



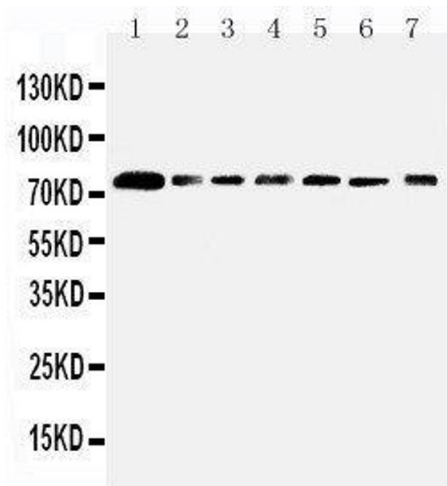
Immunohistochemistry

Image 1. Anti-SPARCL1 antibody, IHC(P) IHC(P): Human Intestinal Cancer Tissue



Immunohistochemistry

Image 2. Anti-SPARCL1 antibody, IHC(P) IHC(P): Rat Brain Tissue



Western Blotting

Image 3. Anti-SPARCL1 antibody, Western blotting Lane 1: Rat Lung Tissue Lysate Lane 2: Mouse Lung Tissue Lysate Lane 3: PANC Cell Lysate Lane 4: A549 Cell Lysate Lane 5: COLO320 Cell Lysate Lane 6: MCF-7 Cell Lysate Lane 7: Cell Lysate