

Datasheet for ABIN3042919
anti-ABI2 antibody (N-Term)



[Go to Product page](#)

1 Image

Overview

Quantity:	100 µg
Target:	ABI2
Binding Specificity:	AA 158-173, N-Term
Reactivity:	Human, Rat
Host:	Rabbit
Clonality:	Polyclonal
Conjugate:	This ABI2 antibody is un-conjugated
Application:	Western Blotting (WB)

Product Details

Purpose:	Rabbit IgG polyclonal antibody for Abl interactor 2(ABI2) detection. Tested with WB in Human,Mouse,Rat.
Immunogen:	A synthetic peptide corresponding to a sequence at the N-terminus of human ABI2(158-173aa RFKVVSTQNMKMGGLPR), identical to the related mouse and rat sequences.
Sequence:	RFKVVSTQNMK MGGLPR
Isotype:	IgG
Cross-Reactivity (Details):	<p>Predicted Cross Reactivity: mouse</p> <p>No cross reactivity with other proteins.</p> <p>Predicted Cross Reactivity: Species predicted to be fit for the product based on sequence similarities.</p>
Characteristics:	Rabbit IgG polyclonal antibody for Abl interactor 2(ABI2) detection. Tested with WB in

Product Details

Human,Mouse,Rat.
Gene Name: abl-interactor 2
Protein Name: Abl interactor 2

Purification: Immunogen affinity purified.

Target Details

Target: ABI2

Alternative Name: ABI2 ([ABI2 Products](#))

Background: ABI2(ABL Interactor 2), is a protein that in humans is encoded by the ABI2 gene. By analysis of a YAC and a BAC, Machado et al.(2000) mapped the ABI2 gene to 2q31-q33. ABI2 possesses a basic N terminus with homology to a homeodomain protein, a central serine-rich region, 3 PEST sequences, which are implicated in susceptibility to protein degradation, several proline-rich stretches, and an acidic C terminus with multiple phosphorylation sites and an SH3 domain. Dai and Pendergast(1995) suggested that the ABI proteins may function to coordinate the cytoplasmic and nuclear functions of the ABL1 tyrosine kinase.

Synonyms: Abelson interactor 2 antibody|ABI 2 antibody|ABI2B antibody|Abl binding protein 3 antibody|Abl interacting protein 1(SH3 containing protein) antibody|Abl interactor 2 antibody|Abl interactor protein 2b antibody|AblBP3 antibody|AIP 1 antibody|Arg binding protein 1 antibody|Arg protein tyrosine kinase binding protein antibody|ArgBP1 antibody|ARGBPIA antibody|ArgBPIB antibody|OTTHUMP00000163783 antibody|OTTHUMP00000163784 antibody|OTTHUMP00000206182 antibody|OTTHUMP00000206183 antibody|OTTHUMP00000206184 antibody|OTTHUMP00000206185 antibody|SSH3BP2 antibody

Application Details

Application Notes: WB: Concentration: 0.1-0.5 µg/mL, Tested Species: Human, Rat, Predicted Species: Mouse
Notes: Tested Species: Species with positive results. Predicted Species: Species predicted to be fit for the product based on sequence similarities.
Other applications have not been tested. Optimal dilutions should be determined by end users.

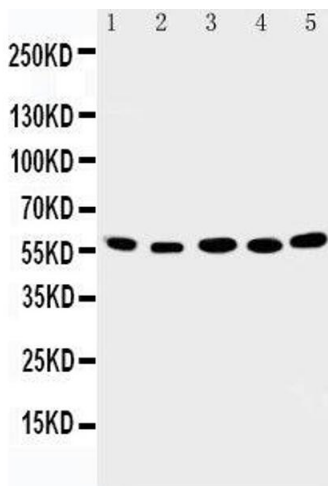
Comment: Antibody can be supported by chemiluminescence kit ABIN921124 in WB.

Restrictions: For Research Use only

Handling

Format:	Lyophilized
Reconstitution:	Add 0.2 mL of distilled water will yield a concentration of 500 µg/mL.
Concentration:	500 µg/mL
Buffer:	Each vial contains 5 mg BSA, 0.9 mg NaCl, 0.2 mg Na ₂ HPO ₄ , 0.05 mg Thimerosal, 0.05 mg Sodium azide.
Preservative:	Thimerosal (Merthiolate), Sodium azide
Precaution of Use:	This product contains Sodium azide and Thimerosal (Merthiolate): POISONOUS AND HAZARDOUS SUBSTANCES which should be handled by trained staff only.
Handling Advice:	Avoid repeated freezing and thawing.
Storage:	4 °C/-20 °C
Storage Comment:	At -20°C for one year. After reconstitution, at 4°C for one month. It can also be aliquotted and stored frozen at -20 °C for a longer time. Avoid repeated freezing and thawing.
Expiry Date:	12 months

Images



Western Blotting

Image 1. Anti-ABI2 antibody, Western blotting Lane 1: Rat Brain Tissue Lysate Lane 2: Human Placenta Tissue Lysate Lane 3: MCF-7 Cell Lysate Lane 4: HELA Cell Lysate Lane 5: JURKAT Cell Lysate