

Datasheet for ABIN3042960
anti-SCLY antibody (C-Term)



[Go to Product page](#)

1 Image

Overview

Quantity:	100 µg
Target:	SCLY
Binding Specificity:	AA 432-445, C-Term
Reactivity:	Human
Host:	Rabbit
Clonality:	Polyclonal
Conjugate:	This SCLY antibody is un-conjugated
Application:	Western Blotting (WB)

Product Details

Purpose:	Anti-Selenocysteine lyase SCLY Antibody Picoband®
Immunogen:	A synthetic peptide corresponding to a sequence at the C-terminus of human SCLY.
Sequence:	QDLKQAVAQL EDQA
Isotype:	IgG
Cross-Reactivity (Details):	No cross-reactivity with other proteins
Characteristics:	Anti-Selenocysteine lyase SCLY Antibody (ABIN3042960). Tested in WB applications. This antibody reacts with Human. The brand Picoband indicates this is a premium antibody that guarantees superior quality, high affinity, and strong signals with minimal background in Western blot applications. Only our best-performing antibodies are designated as Picoband, ensuring unmatched performance.

Product Details

Purification: Immunogen affinity purified.

Target Details

Target: SCLY

Alternative Name: SCLY ([SCLY Products](#))

Background: Synonyms: Selenocysteine lyase,hSCL,4.4.1.16,SCLY,SCL,
Tissue Specificity: Expressed in many tissues, with the highest level in heart and skeletal muscle, intermediate levels in brain, kidney, pancreas and liver, and low levels in placenta and lung. .
Background: SCLY (Selenocysteine Lyase), is an enzyme that catalyzes the chemical reaction. This enzyme belongs to the family of lyases, specifically the class of carbon-sulfur lyases. The International Radiation Hybrid Mapping Consortium mapped the human SCLY gene to chromosome 2. Mihara et al. (2000) showed that mouse Scly catalyzed the conversion of L-selenocysteine to L-alanine. Scly activity required pyridoxal 5-prime phosphate, was specific to L-selenocysteine, and showed maximum reactivity at pH 9.0.
Sequence Similarities: Belongs to the class-V pyridoxal-phosphate-dependent aminotransferase family.

Molecular Weight: 85-91 kDa

UniProt: [Q96I15](#)

Pathways: [Stem Cell Maintenance](#)

Application Details

Application Notes: Western blot, 0.1-0.5 µg/mL, Human
1. Mihara, H., Kurihara, T., Watanabe, T., Yoshimura, T., Esaki, N. cDNA cloning, purification, and characterization of mouse liver selenocysteine lyase: candidate for selenium delivery protein in selenoprotein synthesis. J. Biol. Chem. 275: 6195-6200, 2000.

Comment: Antibody can be supported by chemiluminescence kit ABIN921124 in WB.

Restrictions: For Research Use only

Handling

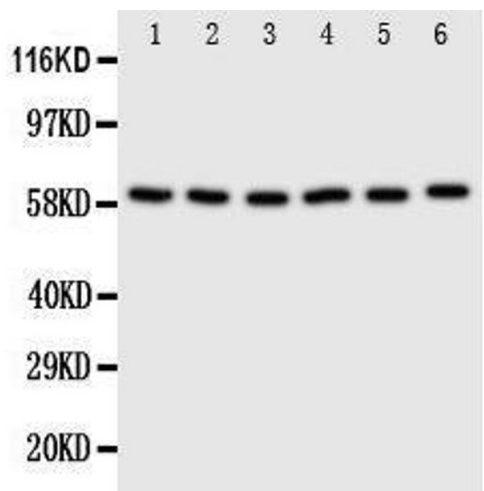
Format: Lyophilized

Reconstitution: Add 0.2 mL of distilled water will yield a concentration of 500 µg/mL.

Handling

Concentration:	500 µg/mL
Buffer:	Each vial contains 5 mg BSA, 0.9 mg NaCl, 0.2 mg Na2HPO4, 0.05 mg Thimerosal, 0.05 mg Sodium azide.
Preservative:	Thimerosal (Merthiolate), Sodium azide
Precaution of Use:	This product contains Thimerosal (Merthiolate) and Sodium azide: POISONOUS AND HAZARDOUS SUBSTANCES which should be handled by trained staff only.
Handling Advice:	Avoid repeated freezing and thawing.
Storage:	4 °C,-20 °C
Storage Comment:	Store at -20°C for one year from date of receipt. After reconstitution, at 4°C for one month. It can also be aliquotted and stored frozen at -20°C for six months. Avoid repeated freeze-thaw cycles.
Expiry Date:	12 months

Images



Western Blotting

Image 1. Anti-SCLY antibody, Western blotting Lane 1: U87 Cell Lysate Lane 2: HELA Cell Lysate Lane 3: 293T Cell Lysate Lane 4: MCF-7 Cell Lysate Lane 5: COLO320 Cell Lysate Lane 6: Cell Lysate