



[Go to Product page](#)

Datasheet for ABIN3042962
anti-NPM2 antibody (N-Term)

1 Image

Overview

Quantity:	100 µg
Target:	NPM2
Binding Specificity:	AA 25-43, N-Term
Reactivity:	Human
Host:	Rabbit
Clonality:	Polyclonal
Conjugate:	This NPM2 antibody is un-conjugated
Application:	Western Blotting (WB)

Product Details

Purpose:	Rabbit IgG polyclonal antibody for Nucleoplasmin-2(NPM2) detection. Tested with WB in Human.
Immunogen:	A synthetic peptide corresponding to a sequence at the N-terminus of human NPM2(25-43aa QERRTWTFRPQLEGKQSCR).
Sequence:	QERRTWTFRP QLEGKQSCR
Isotype:	IgG
Cross-Reactivity (Details):	No cross reactivity with other proteins.
Characteristics:	Rabbit IgG polyclonal antibody for Nucleoplasmin-2(NPM2) detection. Tested with WB in Human. Gene Name: nucleophosmin/nucleoplasmin 2 Protein Name: Nucleoplasmin-2

Product Details

Purification: Immunogen affinity purified.

Target Details

Target: NPM2

Alternative Name: NPM2 ([NPM2 Products](#))

Background: NPM2(Nucleophosmin/Nucleoplasmin Family Member 2), Burns et al.(2003) mapped the mouse Npm2 gene to chromosome 14. Burns et al.(2003) found that female Npm2-null mice showed defects in preimplantation embryo development, with abnormalities in oocyte and early embryonic nuclei.

Synonyms: NPM2 antibody|NPM2_HUMAN antibody|nucleophosmin/nucleoplasmin, 2 antibody|nucleoplasmin 2 antibody|Nucleoplasmin-2 antibody

Application Details

Application Notes: WB: Concentration: 0.1-0.5 µg/mL, Tested Species: Human
Notes: Tested Species: Species with positive results. Predicted Species: Species predicted to be fit for the product based on sequence similarities.
Other applications have not been tested. Optimal dilutions should be determined by end users.

Comment: Antibody can be supported by chemiluminescence kit ABIN921124 in WB.

Restrictions: For Research Use only

Handling

Format: Lyophilized

Reconstitution: Add 0.2 mL of distilled water will yield a concentration of 500 µg/mL.

Concentration: 500 µg/mL

Buffer: Each vial contains 5 mg BSA, 0.9 mg NaCl, 0.2 mg Na₂HPO₄, 0.05 mg Thimerosal, 0.05 mg Sodium azide.

Preservative: Thimerosal (Merthiolate), Sodium azide

Precaution of Use: This product contains Sodium azide and Thimerosal (Merthiolate): POISONOUS AND HAZARDOUS SUBSTANCES which should be handled by trained staff only.

Handling Advice: Avoid repeated freezing and thawing.

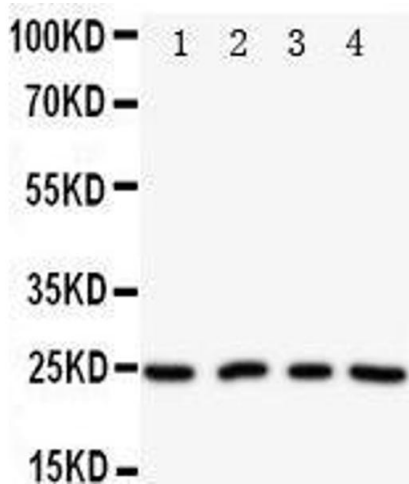
Handling

Storage: 4 °C/-20 °C

Storage Comment: At -20°C for one year. After reconstitution, at 4°C for one month.
It can also be aliquotted and stored frozen at -20 °C for a longer time. Avoid repeated freezing and thawing.

Expiry Date: 12 months

Images



Western Blotting

Image 1. Anti-NPM2 antibody, Western blotting Lane 1: HELA Cell Lysate Lane 2: U87 Cell Lysate Lane 3: A549 Cell Lysate Lane 4: SMMC Cell Lysate