



[Go to Product page](#)

Datasheet for ABIN3042998
anti-IDS antibody (C-Term)

2 Images

Overview

Quantity:	100 µg
Target:	IDS
Binding Specificity:	AA 430-448, C-Term
Reactivity:	Human
Host:	Rabbit
Clonality:	Polyclonal
Conjugate:	This IDS antibody is un-conjugated
Application:	Western Blotting (WB), Immunohistochemistry (Paraffin-embedded Sections) (IHC (p))

Product Details

Purpose:	Rabbit IgG polyclonal antibody for Iduronate 2-sulfatase(IDS) detection. Tested with WB, IHC-P in Human.
Immunogen:	A synthetic peptide corresponding to a sequence at the C-terminus of human Iduronate 2 sulfatase(430-448aa ELCREGKNLLKHFRFRDLE).
Sequence:	ELCREGKNLL KHFRFRDLE
Isotype:	IgG
Cross-Reactivity (Details):	No cross reactivity with other proteins.
Characteristics:	Rabbit IgG polyclonal antibody for Iduronate 2-sulfatase(IDS) detection. Tested with WB, IHC-P in Human. Gene Name: iduronate 2-sulfatase Protein Name: Iduronate 2-sulfatase

Product Details

Purification: Immunogen affinity purified.

Target Details

Target: IDS

Alternative Name: IDS ([IDS Products](#))

Background: IDS (Iduronate-2-sulfatase) is a sulfatase enzyme associated with Hunter syndrome. Iduronate 2-sulfatase is involved in the lysosomal degradation of the glycosaminoglycans heparan sulfate and dermatan sulfate. Wilson et al. (1991) used an IDS cDNA clone to localize the gene to Xq28, distal to the fragile X site. Faust et al. (1992) and Daniele et al. (1993) demonstrated that the homologous Ids gene in the mouse occupies the same position on the X chromosome in relation to the FMR1, F9, and GABRA3 genes. Iduronate-2-sulfatase is required for the lysosomal degradation of heparan sulfate and dermatan sulfate. Mutations in this X-chromosome gene that result in enzymatic deficiency lead to the sex-linked mucopolysaccharidosis type II, also known as Hunter syndrome. Iduronate-2-sulfatase has a strong sequence homology with human arylsulfatases A, B, and C, and human glucosamine-6-sulfatase.

Synonyms: Alpha L iduronate sulfate sulfatase antibody|Alpha-L-iduronate sulfate sulfatase antibody|AW214631 antibody|Ids antibody|IDS_HUMAN antibody|Iduronate 2 sulfatase 14 kDa chain antibody|Iduronate 2 sulfatase 42 kDa chain antibody|Iduronate 2 sulfatase antibody|Iduronate 2-sulfatase 14 kDa chain antibody|Iduronate sulfatase antibody|Idursulfase antibody|MPS2 antibody|RP23-29M4.1 antibody|SIDS antibody

UniProt: [P22304](#)

Pathways: [Glycosaminoglycan Metabolic Process](#)

Application Details

Application Notes: WB: Concentration: 0.1-0.5 µg/mL, Tested Species: Human
IHC-P: Concentration: 0.5-1 µg/mL, Tested Species: Human, Epitope Retrieval by Heat: Boiling the paraffin sections in 10 mM citrate buffer, pH 6.0, for 20 mins is required for the staining of formalin/paraffin sections.
Notes: Tested Species: Species with positive results. Predicted Species: Species predicted to be fit for the product based on sequence similarities. Other applications have not been tested.
Optimal dilutions should be determined by end users.

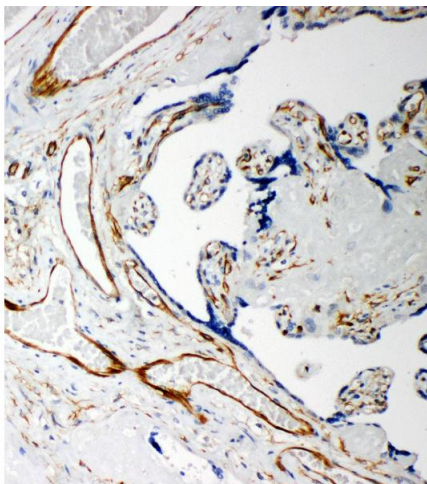
Application Details

Comment:	Antibody can be supported by chemiluminescence kit ABIN921124 in WB, supported by ABIN921231 in IHC(P).
Restrictions:	For Research Use only

Handling

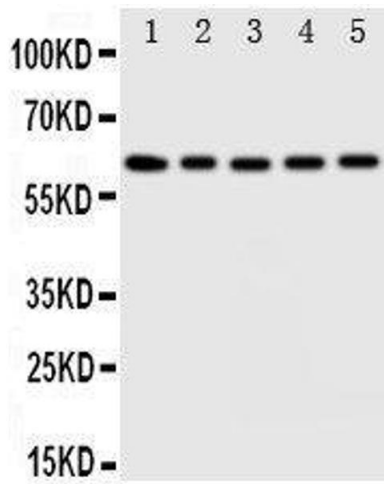
Format:	Lyophilized
Reconstitution:	Add 0.2 mL of distilled water will yield a concentration of 500 µg/mL.
Concentration:	500 µg/mL
Buffer:	Each vial contains 5 mg BSA, 0.9 mg NaCl, 0.2 mg Na ₂ HPO ₄ , 0.05 mg Thimerosal, 0.05 mg Sodium azide.
Preservative:	Thimerosal (Merthiolate), Sodium azide
Precaution of Use:	This product contains Sodium azide and Thimerosal (Merthiolate): POISONOUS AND HAZARDOUS SUBSTANCES which should be handled by trained staff only.
Handling Advice:	Avoid repeated freezing and thawing.
Storage:	4 °C/-20 °C
Storage Comment:	At -20°C for one year. After reconstitution, at 4°C for one month. It can also be aliquotted and stored frozen at -20 °C for a longer time. Avoid repeated freezing and thawing.
Expiry Date:	12 months

Images



Immunohistochemistry

Image 1. Anti-Iduronate 2 sulfatase antibody, IHC(P) IHC(P):
Human Placenta Tissue



Western Blotting

Image 2. Anti-Iduronate 2 sulfatase antibody, Western blotting Lane 1: HELA Cell Lysate Lane 2: SMMC Cell Lysate Lane 3: A549 Cell Lysate Lane 4: MCF-7 Cell Lysate Lane 5: COLO Cell Lysate