

Datasheet for ABIN3043005
anti-KLF8 antibody (N-Term)



[Go to Product page](#)

1 Image

Overview

Quantity:	100 µg
Target:	KLF8
Binding Specificity:	AA 1-18, N-Term
Reactivity:	Human
Host:	Rabbit
Clonality:	Polyclonal
Conjugate:	This KLF8 antibody is un-conjugated
Application:	Western Blotting (WB)

Product Details

Purpose:	Anti-Krueppel-like factor 8 KLF8 Antibody Picoband®
Immunogen:	A synthetic peptide corresponding to a sequence at the N-terminus of human KLF8.
Sequence:	MVDMDKLIIN LEVQLNSE
Isotype:	IgG
Cross-Reactivity (Details):	No cross-reactivity with other proteins
Characteristics:	Anti-Krueppel-like factor 8 KLF8 Antibody (ABIN3043005). Tested in WB applications. This antibody reacts with Human. The brand Picoband indicates this is a premium antibody that guarantees superior quality, high affinity, and strong signals with minimal background in Western blot applications. Only our best-performing antibodies are designated as Picoband, ensuring unmatched performance.

Product Details

Purification: Immunogen affinity purified.

Target Details

Target: KLF8

Alternative Name: KLF8 ([KLF8 Products](#))

Background: Synonyms: Krueppel-like factor 8,Basic krueppel-like factor 3,Zinc finger protein 741,KLF8,BKLF3, ZNF741,
Tissue Specificity: Ubiquitous. .
Background: KLF8 (Krueppel-like factor 8) is a protein that in humans is encoded by the KLF8 gene. It is also named as ZNF741, or BKLF3. Kruppel-like factor proteins, including KLF8, all contain a characteristic C-terminal DNA-binding domain containing 3 Kruppel-like zinc fingers, and they all recognize CACCC and GC boxes present in promoters and enhancers. The International Radiation Hybrid Mapping Consortium mapped the KLF8 gene to the X chromosome (WI-18614). Suske et al. (2005) stated that the human KLF8 gene maps to chromosome Xp11.21, and the mouse Klf8 gene to chromosome XF3. van Vliet et al. (2000) identified a cDNA encoding KLF8, also called ZNF741. Expression of KLF8 or only its zinc fingers showed that the fingers could bind to a CACCC box. Sequence analysis predicted that the 359-amino acid protein contains a nuclear localization signal upstream of the zinc fingers, a valine-rich hydrophobic stretch, and a pro-val-asp-leu-ser (PVDLS) motif. Yeast 2-hybrid and GST pull-down analysis demonstrated that CTBP2 interacts with KLF8 through the PVDLS motif.
Sequence Similarities: Belongs to the Sp1 C2H2-type zinc-finger protein family.

Molecular Weight: 60 kDa

UniProt: [O95600](#)

Application Details

Application Notes: Western blot, 0.1-0.5 µg/mL, Human
1. Lossi, A.-M., Laugier-Anfossi, F., Depetris, D., Gecz, J., Gedeon, A., Kooy, F., Schwartz, C., Mattei, M.-G., Croquette, M.-F., Villard, L.Abnormal expression of the KLF8 (ZNF741) gene in a female patient with an X,autosome translocation t(X,21)(p11.2,q22.3) and non-syndromic mental retardation.J. Med. Genet. 39: 113-117, 2002. 2. Suske, G., Bruford, E., Philipsen, S.Mammalian SP/KLF transcription factors: bring in the family.Genomics 85: 551-556, 2005. 3. van Vliet, J., Turner, J., Crossley, M.Human Kruppel-like factor 8: a CACCC-box binding protein

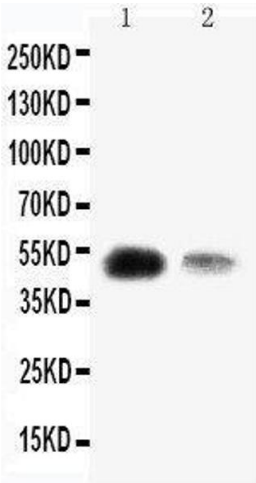
Application Details

	that associates with CtBP and represses transcription.Nucleic Acids Res. 28: 1955-1962, 2000.
Comment:	Antibody can be supported by chemiluminescence kit ABIN921124 in WB.
Restrictions:	For Research Use only

Handling

Format:	Lyophilized
Reconstitution:	Add 0.2 mL of distilled water will yield a concentration of 500 µg/mL.
Concentration:	500 µg/mL
Buffer:	Each vial contains 5 mg BSA, 0.9 mg NaCl, 0.2 mg Na2HPO4, 0.05 mg Thimerosal, 0.05 mg Sodium azide.
Preservative:	Thimerosal (Merthiolate), Sodium azide
Precaution of Use:	This product contains Thimerosal (Merthiolate) and Sodium azide: POISONOUS AND HAZARDOUS SUBSTANCES which should be handled by trained staff only.
Handling Advice:	Avoid repeated freezing and thawing.
Storage:	4 °C,-20 °C
Storage Comment:	Store at -20°C for one year from date of receipt. After reconstitution, at 4°C for one month. It can also be aliquotted and stored frozen at -20°C for six months. Avoid repeated freeze-thaw cycles.
Expiry Date:	12 months

Images



Western Blotting

Image 1. Anti-KLF8 antibody, Western blotting Lane 1: SMMC Cell Lysate Lane 2: 293T Cell Lysate