

Datasheet for ABIN3043014
anti-Patched 2 antibody (C-Term)[Go to Product page](#)

1 Image

Overview

Quantity:	100 µg
Target:	Patched 2 (PTCH2)
Binding Specificity:	AA 885-901, C-Term
Reactivity:	Human
Host:	Rabbit
Clonality:	Polyclonal
Conjugate:	This Patched 2 antibody is un-conjugated
Application:	Western Blotting (WB)

Product Details

Purpose:	Rabbit IgG polyclonal antibody for Protein patched homolog 2(PTCH2) detection. Tested with WB in Human,Mouse.
Immunogen:	A synthetic peptide corresponding to a sequence at the C-terminus of human PTCH2(885-901aa WLHDKYDTTGENLRIPP), different from the related mouse sequence by one amino acid.
Sequence:	WLHDKYDTTG ENLRIPP
Isotype:	IgG
Cross-Reactivity (Details):	<p>Predicted Cross Reactivity: mouse</p> <p>No cross reactivity with other proteins.</p> <p>Predicted Cross Reactivity: Species predicted to be fit for the product based on sequence similarities.</p>
Characteristics:	Rabbit IgG polyclonal antibody for Protein patched homolog 2(PTCH2) detection. Tested with

Product Details

WB in Human,Mouse.

Gene Name: patched 2

Protein Name: Protein patched homolog 2(PTC2)

Purification: Immunogen affinity purified.

Target Details

Target: Patched 2 (PTCH2)

Alternative Name: PTCH2 ([PTCH2 Products](#))

Background: PTCH2(patched 2), also known as PTC2, encodes a 1.203-amino acid putative transmembrane protein that is highly homologous to the PTCH product. The Patched-hedgehog signaling pathway is involved in establishing segment polarity and the anterior-posterior orientation of a number of developing appendages. The pathway is conserved from fly to vertebrates and has been implicated in a number of human neoplasms and developmental syndromes. Mutations in the human Patched gene are the basis of the nevoid basal cell carcinoma syndrome. With age, homozygous mutant male mice developed skin lesions consisting of alopecia and epidermal hyperplasia, suggesting a role for Ptch2 in adult epidermal homeostasis via Shh signaling.

Synonyms: patched(Drosophila) homolog 2 antibody|patched homolog 2(Drosophila) antibody|Protein patched homolog 2 antibody|PTC2 antibody|PTC2_HUMAN antibody|Ptch2 antibody

UniProt: [Q9Y6C5](#)

Pathways: [Hedgehog Signaling](#)

Application Details

Application Notes: WB: Concentration: 0.1-0.5 µg/mL, Tested Species: Human, Predicted Species: Mouse
Notes: Tested Species: Species with positive results. Predicted Species: Species predicted to be fit for the product based on sequence similarities.
Other applications have not been tested. Optimal dilutions should be determined by end users.

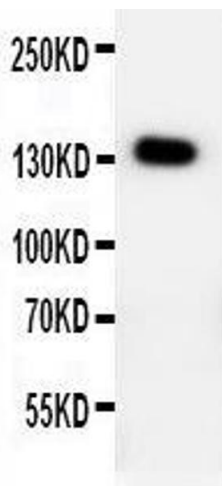
Comment: Antibody can be supported by chemiluminescence kit ABIN921124 in WB.

Restrictions: For Research Use only

Handling

Format:	Lyophilized
Reconstitution:	Add 0.2 mL of distilled water will yield a concentration of 500 µg/mL.
Concentration:	500 µg/mL
Buffer:	Each vial contains 5 mg BSA, 0.9 mg NaCl, 0.2 mg Na ₂ HPO ₄ , 0.05 mg Thimerosal, 0.05 mg Sodium azide.
Preservative:	Thimerosal (Merthiolate), Sodium azide
Precaution of Use:	This product contains Sodium azide and Thimerosal (Merthiolate): POISONOUS AND HAZARDOUS SUBSTANCES which should be handled by trained staff only.
Handling Advice:	Avoid repeated freezing and thawing.
Storage:	4 °C/-20 °C
Storage Comment:	At -20°C for one year. After reconstitution, at 4°C for one month. It can also be aliquotted and stored frozen at -20 °C for a longer time. Avoid repeated freezing and thawing.
Expiry Date:	12 months

Images



Western Blotting

Image 1. Anti-PTCH2 antibody, Western blotting WB: HELA Cell Lysate