

Datasheet for ABIN3043034
anti-SSX2 antibody (C-Term)[Go to Product page](#)

2 Images

Overview

Quantity:	100 µg
Target:	SSX2
Binding Specificity:	AA 157-184, C-Term
Reactivity:	Human
Host:	Rabbit
Clonality:	Polyclonal
Conjugate:	This SSX2 antibody is un-conjugated
Application:	Western Blotting (WB), Immunohistochemistry (Paraffin-embedded Sections) (IHC (p))

Product Details

Purpose:	Rabbit IgG polyclonal antibody for Protein SSX2(SSX2) detection. Tested with WB, IHC-P in Human.
Immunogen:	A synthetic peptide corresponding to a sequence at the C-terminus of human Protein SSX2(157-184aa NREAQEKEERRGTAHRWSSQNTNIGRF).
Sequence:	NREAQEKEER RGT AHRWSSQ NTHNIGRF
Isotype:	IgG
Cross-Reactivity (Details):	No cross reactivity with other proteins.
Characteristics:	Rabbit IgG polyclonal antibody for Protein SSX2(SSX2) detection. Tested with WB, IHC-P in Human. Gene Name: SSX family member 2 Protein Name: Protein SSX2

Product Details

Purification: Immunogen affinity purified.

Target Details

Target: SSX2

Alternative Name: Protein SSX2 ([SSX2 Products](#))

Background: Synovial sarcoma, X breakpoint 2, also known as SSX2, is a human gene. The product of this gene belongs to the family of highly homologous synovial sarcoma X(SSX) breakpoint proteins. SSX1, SSX2 and SSX4 genes have been involved in the t(X,18) translocation characteristically found in all synovial sarcomas. The SSX1 and SSX2 genes encode closely related proteins(81 % identity) of 188 amino acids that are rich in charged amino acids. The N-terminal portion of each SSX protein exhibits homology to the Kruppel-associated box(KRAB), a transcriptional repressor domain previously found only in Kruppel-type zinc finger proteins.

Synonyms: Cancer/testis antigen 5.2 antibody|CT5.2 antibody|HD21 antibody|hom mel 40 antibody|HOM-MEL-40 antibody|MGC119055 antibody|MGC15364 antibody|MGC3884 antibody|Protein SSX2 antibody|RP11-552J9.2 antibody|sarcoma, synovial, X-chromosome related 2 antibody|SSx antibody|SSX2 antibody|SSX2-SYT fusion gene, included antibody|SSX2_HUMAN antibody|SSX2B antibody|Synovial sarcoma antibody|synovial sarcoma X breakpoint 2 antibody|Tumor antigen HOM-MEL-40 antibody|X breakpoint 2 antibody

UniProt: [Q16385](#)

Application Details

Application Notes: WB: Concentration: 0.1-0.5 µg/mL, Tested Species: Human
IHC-P: Concentration: 0.5-1 µg/mL, Tested Species: Human, Epitope Retrieval by Heat: Boiling the paraffin sections in 10 mM citrate buffer, pH 6.0, for 20 mins is required for the staining of formalin/paraffin sections.
Notes: Tested Species: Species with positive results. Predicted Species: Species predicted to be fit for the product based on sequence similarities. Other applications have not been tested.
Optimal dilutions should be determined by end users.

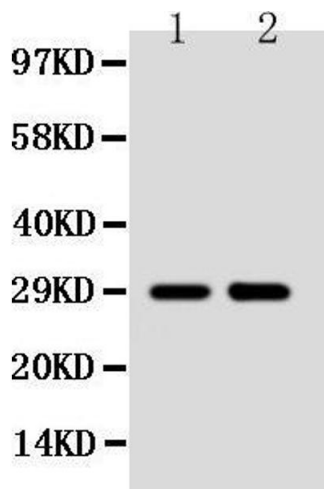
Comment: Antibody can be supported by chemiluminescence kit ABIN921124 in WB, supported by ABIN921231 in IHC(P).

Restrictions: For Research Use only

Handling

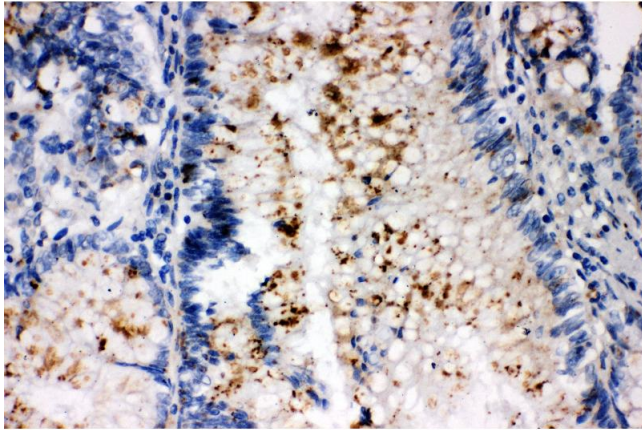
Format:	Lyophilized
Reconstitution:	Add 0.2 mL of distilled water will yield a concentration of 500 µg/mL.
Concentration:	500 µg/mL
Buffer:	Each vial contains 5 mg BSA, 0.9 mg NaCl, 0.2 mg Na ₂ HPO ₄ , 0.05 mg Thimerosal, 0.05 mg Sodium azide.
Preservative:	Thimerosal (Merthiolate), Sodium azide
Precaution of Use:	This product contains Sodium azide and Thimerosal (Merthiolate): POISONOUS AND HAZARDOUS SUBSTANCES which should be handled by trained staff only.
Handling Advice:	Avoid repeated freezing and thawing.
Storage:	4 °C/-20 °C
Storage Comment:	At -20°C for one year. After reconstitution, at 4°C for one month. It can also be aliquotted and stored frozen at -20 °C for a longer time. Avoid repeated freezing and thawing.

Images



Western Blotting

Image 1. Anti-SSX2 antibody, Western blotting Lane 1: MCF-7 Cell Lysate Lane 2: HELA Cell Lysate



Immunohistochemistry

Image 2. Anti-SSX2 antibody, IHC(P) IHC(P): Human Intestinal Cancer Tissue