



[Go to Product page](#)

Datasheet for ABIN3043035
anti-LY6AL antibody (AA 91-108)

1 Image

Overview

Quantity:	100 µg
Target:	LY6AL
Binding Specificity:	AA 91-108
Reactivity:	Rat
Host:	Rabbit
Clonality:	Polyclonal
Application:	Western Blotting (WB)

Product Details

Purpose:	Rabbit IgG polyclonal antibody for Ly6-A antigen(Ly6al) detection. Tested with WB in Rat.
Immunogen:	A synthetic peptide corresponding to a sequence of rat Ly6al(91-108aa, TVVQVNTSCCTRDLCNAA).
Sequence:	TVVQVNTSCC TRDLCNAA
Isotype:	IgG
Cross-Reactivity (Details):	No cross reactivity with other proteins.
Characteristics:	Rabbit IgG polyclonal antibody for Ly6-A antigen(Ly6al) detection. Tested with WB in Rat. Gene Name: lymphocyte antigen 6 complex, locus A-like Protein Name: Ly6-A antigen
Purification:	Immunogen affinity purified.

Target Details

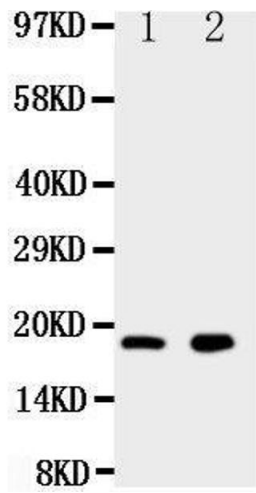
Target:	LY6AL
Alternative Name:	Ly6al (LY6AL Products)
Background:	Ly6al, lymphocyte antigen 6 complex, locus A-like, is also known as Ly6a, Ly6a_predicted. Synonyms: Ly6al
UniProt:	Q63316

Application Details

Application Notes:	WB: Concentration: 0.1-0.5 µg/mL, Tested Species: Rat Notes: Tested Species: Species with positive results. Predicted Species: Species predicted to be fit for the product based on sequence similarities. Other applications have not been tested. Optimal dilutions should be determined by end users.
Comment:	Antibody can be supported by chemiluminescence kit ABIN921124 in WB.
Restrictions:	For Research Use only

Handling

Format:	Lyophilized
Reconstitution:	Add 0.2 mL of distilled water will yield a concentration of 500 µg/mL.
Concentration:	500 µg/mL
Buffer:	Each vial contains 5 mg BSA, 0.9 mg NaCl, 0.2 mg Na ₂ HPO ₄ , 0.05 mg Thimerosal, 0.05 mg Sodium azide.
Preservative:	Thimerosal (Merthiolate), Sodium azide
Precaution of Use:	This product contains Sodium azide and Thimerosal (Merthiolate): POISONOUS AND HAZARDOUS SUBSTANCES which should be handled by trained staff only.
Handling Advice:	Avoid repeated freezing and thawing.
Storage:	4 °C/-20 °C
Storage Comment:	At -20°C for one year. After reconstitution, at 4°C for one month. It can also be aliquotted and stored frozen at -20 °C for a longer time. Avoid repeated freezing and thawing.
Expiry Date:	12 months



Western Blotting

Image 1. Anti-Ly6al antibody, Western blotting Lane 1: Rat Cardiac Muscle Tissue Lysate Lane 2: Rat Liver Tissue Lysate