

Datasheet for ABIN3043056

anti-SPTLC1 antibody (Middle Region)**2** Images[Go to Product page](#)

Overview

Quantity:	100 µg
Target:	SPTLC1
Binding Specificity:	AA 138-154, Middle Region
Reactivity:	Human
Host:	Rabbit
Clonality:	Polyclonal
Conjugate:	This SPTLC1 antibody is un-conjugated
Application:	Western Blotting (WB), Immunohistochemistry (Paraffin-embedded Sections) (IHC (p))

Product Details

Purpose:	Rabbit IgG polyclonal antibody for Serine palmitoyltransferase 1(SPTLC1) detection. Tested with WB, IHC-P in Human.
Immunogen:	A synthetic peptide corresponding to a sequence in the middle region of human SPTLC1(138-154aa FYGTFDVHLDLEDRLAK).
Sequence:	FYGTFDVHLD LEDRLAK
Isotype:	IgG
Cross-Reactivity (Details):	No cross reactivity with other proteins.
Characteristics:	<p>Rabbit IgG polyclonal antibody for Serine palmitoyltransferase 1(SPTLC1) detection. Tested with WB, IHC-P in Human.</p> <p>Gene Name: serine palmitoyltransferase, long chain base subunit 1</p> <p>Protein Name: Serine palmitoyltransferase 1</p>

Product Details

Purification: Immunogen affinity purified.

Target Details

Target: SPTLC1

Alternative Name: SPTLC1 ([SPTLC1 Products](#))

Background: SPTLC1(Serine palmitoyltransferase, long chain base subunit 1), also known as SPT1, LCB1, is a protein which in humans is encoded by the SPTLC1 gene. Dawkins et al.(2001)noted that the SPTLC1 gene maps to chromosome 9q22.1-q22.3. Serine palmitoyltransferase, which consists of two different subunits, is the initial enzyme in sphingolipid biosynthesis. It converts L-serine and palmitoyl CoA to 3-oxosphinganine with pyridoxal 5'-phosphate as a cofactor. The product of this gene is the long chain base subunit 1 of serine palmitoyltransferase. Mutations in this gene were identified in patients with hereditary sensory neuropathy type 1. Alternatively spliced variants encoding different isoforms have been identified.

Synonyms: HSN antibody|HSAN1 antibody|HSN1 antibody|LCB1 antibody|LCB 1 antibody|LCB1 antibody|Long chain base biosynthesis protein 1 antibody|MGC14645 antibody|Serine C palmitoyltransferase antibody|Serine palmitoyl CoA transferase 1 antibody|Serine palmitoyltransferase 1 antibody|Serine palmitoyltransferase long chain base subunit 1 antibody|Serine palmitoyltransferase subunit 1 antibody|Serine-palmitoyl-CoA transferase 1 antibody|SPT 1 antibody|SPT1 antibody|SPTC1_HUMAN antibody|SPTI antibody|SPTLC 1 antibody|SPTLC1 antibody

UniProt: [O15269](#)

Application Details

Application Notes: WB: Concentration: 0.1-0.5 µg/mL, Tested Species: Human
IHC-P: Concentration: 0.5-1 µg/mL, Tested Species: Human, Epitope Retrieval by Heat: Boiling the paraffin sections in 10 mM citrate buffer, pH 6.0, for 20 mins is required for the staining of formalin/paraffin sections.
Notes: Tested Species: Species with positive results. Predicted Species: Species predicted to be fit for the product based on sequence similarities. Other applications have not been tested.
Optimal dilutions should be determined by end users.

Comment: Antibody can be supported by chemiluminescence kit ABIN921124 in WB, supported by ABIN921231 in IHC(P).

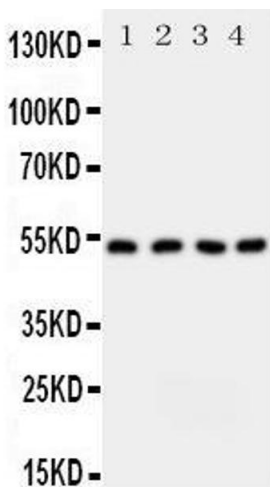
Application Details

Restrictions: For Research Use only

Handling

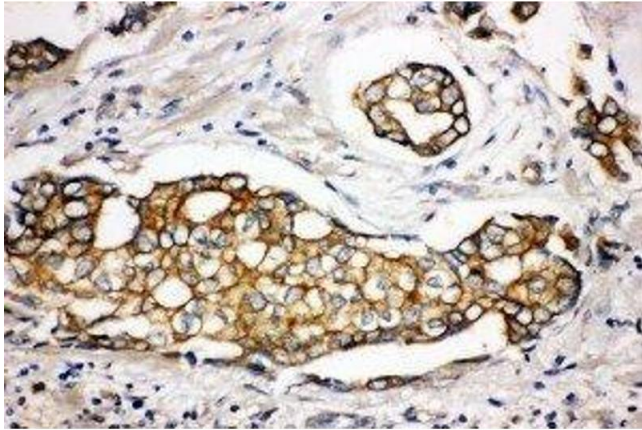
Format:	Lyophilized
Reconstitution:	Add 0.2 mL of distilled water will yield a concentration of 500 µg/mL.
Concentration:	500 µg/mL
Buffer:	Each vial contains 5 mg BSA, 0.9 mg NaCl, 0.2 mg Na ₂ HPO ₄ , 0.05 mg Thimerosal, 0.05 mg Sodium azide.
Preservative:	Thimerosal (Merthiolate), Sodium azide
Precaution of Use:	This product contains Sodium azide and Thimerosal (Merthiolate): POISONOUS AND HAZARDOUS SUBSTANCES which should be handled by trained staff only.
Handling Advice:	Avoid repeated freezing and thawing.
Storage:	4 °C/-20 °C
Storage Comment:	At -20°C for one year. After reconstitution, at 4°C for one month. It can also be aliquotted and stored frozen at -20 °C for a longer time. Avoid repeated freezing and thawing.
Expiry Date:	12 months

Images



Western Blotting

Image 1.



Immunohistochemistry

Image 2. Anti-SPTLC1 antibody, IHC(P) IHC(P): Human Mammary Cancer Tissue