

Datasheet for ABIN3043075
anti-RFC1 antibody (N-Term)[Go to Product page](#)

2 Images

Overview

Quantity:	100 µg
Target:	RFC1
Binding Specificity:	AA 46-64, N-Term
Reactivity:	Human
Host:	Rabbit
Clonality:	Polyclonal
Conjugate:	This RFC1 antibody is un-conjugated
Application:	Western Blotting (WB), Immunohistochemistry (Paraffin-embedded Sections) (IHC (p))

Product Details

Purpose:	Rabbit IgG polyclonal antibody for Replication factor C subunit 1(RFC1) detection. Tested with WB, IHC-P in Human.
Immunogen:	A synthetic peptide corresponding to a sequence at the N-terminus of human RFC1(46-64aa NSSRKEDDFKQKQPSKKKR).
Sequence:	NSSRKEDDFK QKQPSKKKR
Isotype:	IgG
Cross-Reactivity (Details):	No cross reactivity with other proteins.
Characteristics:	Rabbit IgG polyclonal antibody for Replication factor C subunit 1(RFC1) detection. Tested with WB, IHC-P in Human. Gene Name: replication factor C(activator 1) 1, 145 kDa Protein Name: Replication factor C subunit 1

Product Details

Purification: Immunogen affinity purified.

Target Details

Target: RFC1

Alternative Name: RFC1 ([RFC1 Products](#))

Background: RFC(Replication Factor C), also called activator-1, is a multimeric primer-recognition protein consisting of 5 distinct subunits of 145, 40, 38, 37, and 36.5 kD. Human RFC was purified from extracts of HeLa cells as a host factor essential for the in vitro replication of simian virus 40(SV40) DNA. RFC, in the presence of ATP, assembles proliferating-cell nuclear antigen and DNA polymerase-delta or polymerase-epsilon on primed DNA templates. Tight interfacial coordination of the ATP analog ATP-gamma-S by RFC resulted in a spiral arrangement of the ATPase domains of the clamp loader above the PCNA ring.

Synonyms: A1 140 kDa subunit antibody|A1 antibody|A1 P145 Activator 1 large subunit antibody|Activator 1 140 kDa subunit antibody|Activator 1 large subunit antibody|Activator 1 subunit 1 antibody|DNA binding Protein PO GA antibody|DNA-binding protein PO-GA antibody|MHC binding factor beta antibody|MHC BFB antibody|PO GA antibody|RECC1 antibody|Replication factor C(activator 1) 1, 145 kDa antibody|Replication factor C 140 kDa subunit antibody|Replication factor C antibody|Replication factor C large subunit antibody|Replication factor C subunit 1 antibody|Replication factor C1 antibody|RF-C 140 kDa subunit antibody|RFC antibody|RFC1 antibody|RFC1_HUMAN antibody|RFC140 antibody|RFC140 Replication Factor C 140 kDa subunit antibody

UniProt: [P35251](#)

Pathways: [Telomere Maintenance](#), [DNA Damage Repair](#), [DNA Replication](#), [Synthesis of DNA](#), [Dicarboxylic Acid Transport](#)

Application Details

Application Notes: WB: Concentration: 0.1-0.5 µg/mL, Tested Species: Human
IHC-P: Concentration: 0.5-1 µg/mL, Tested Species: Human, Epitope Retrieval by Heat: Boiling the paraffin sections in 10 mM citrate buffer, pH 6.0, for 20 mins is required for the staining of formalin/paraffin sections.
Notes: Tested Species: Species with positive results. Predicted Species: Species predicted to be fit for the product based on sequence similarities. Other applications have not been tested.

Application Details

Optimal dilutions should be determined by end users.

Comment: Antibody can be supported by chemiluminescence kit ABIN921124 in WB, supported by ABIN921231 in IHC(P).

Restrictions: For Research Use only

Handling

Format: Lyophilized

Reconstitution: Add 0.2 mL of distilled water will yield a concentration of 500 µg/mL.

Concentration: 500 µg/mL

Buffer: Each vial contains 5 mg BSA, 0.9 mg NaCl, 0.2 mg Na₂HPO₄, 0.05 mg Thimerosal, 0.05 mg Sodium azide.

Preservative: Thimerosal (Merthiolate), Sodium azide

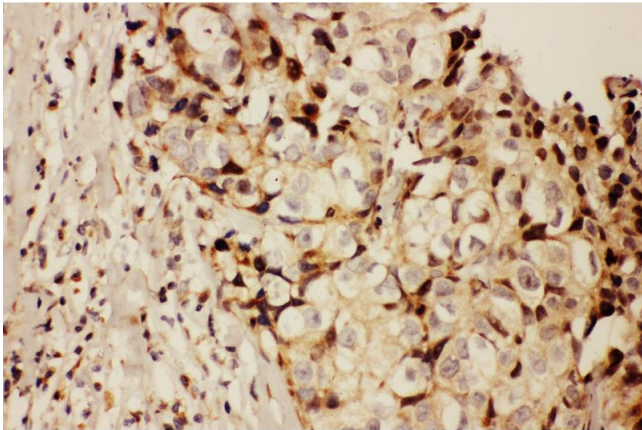
Precaution of Use: This product contains Sodium azide and Thimerosal (Merthiolate): POISONOUS AND HAZARDOUS SUBSTANCES which should be handled by trained staff only.

Handling Advice: Avoid repeated freezing and thawing.

Storage: 4 °C/-20 °C

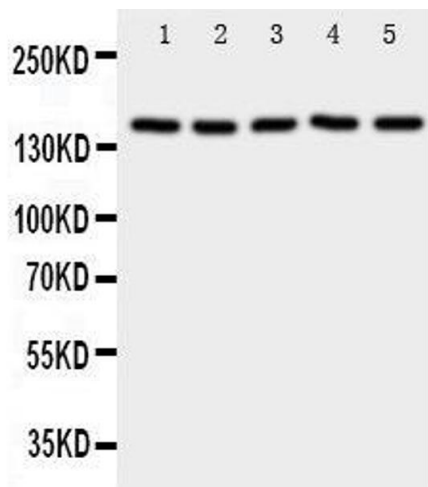
Storage Comment: At -20°C for one year. After reconstitution, at 4°C for one month.
It can also be aliquotted and stored frozen at -20 °C for a longer time. Avoid repeated freezing and thawing.

Expiry Date: 12 months



Immunohistochemistry

Image 1. Anti-RFC1 antibody, IHC(P) IHC(P): Human Mammary Cancer Tissue



Western Blotting

Image 2.