

Datasheet for ABIN3043080

anti-Kallikrein 1 antibody (C-Term)



[Go to Product page](#)

2 Images

2 Publications

Overview

Quantity:	100 µg
Target:	Kallikrein 1 (KLK1)
Binding Specificity:	AA 243-261, C-Term
Reactivity:	Mouse
Host:	Rabbit
Clonality:	Polyclonal
Conjugate:	This Kallikrein 1 antibody is un-conjugated
Application:	Western Blotting (WB), Immunohistochemistry (Paraffin-embedded Sections) (IHC (p))

Product Details

Purpose:	Rabbit IgG polyclonal antibody for Kallikrein-1(KLK1) detection. Tested with WB, IHC-P in Mouse.
Immunogen:	A synthetic peptide corresponding to a sequence at the C-terminus of mouse Kallikrein 1(243-261aa YTRVLNFNTWIRETMAEND).
Sequence:	YTRVLNFNTW IRETMAEND
Isotype:	IgG
Cross-Reactivity (Details):	No cross reactivity with other proteins.
Characteristics:	Rabbit IgG polyclonal antibody for Kallikrein-1(KLK1) detection. Tested with WB, IHC-P in Mouse. Gene Name: kallikrein 1 Protein Name: Kallikrein-1

Product Details

Purification: Immunogen affinity purified.

Target Details

Target: Kallikrein 1 (KLK1)

Alternative Name: KLK1 ([KLK1 Products](#))

Background: KLK1(KALLIKREIN 1), also called KLKR, is a protein that in humans is encoded by the KLK1 gene. KLK1 is a member of the peptidase S1 family. KLK1 is a serine protease that generates Lys-bradykinin by specific proteolysis of kininogen-1. The KLK1 gene is one of the fifteen kallikrein subfamily members located in a cluster on chromosome 19 and its exact cytogenetic location is 19q13.33. The KLK1 gene contains 5 coding exons. And KLK1 is the most centromeric gene in the cluster. Mice lacking tissue kallikrein are unable to generate significant levels of kinins in most tissues and develop cardiovascular abnormalities early in adulthood despite normal blood pressure. The protein is functionally conserved in its capacity to release the vasoactive peptide, Lys-bradykinin, from low molecular weight kininogen.

Synonyms: Glandular kallikrein 1 antibody|hK 1 antibody|hK1 antibody|Kallikrein serine protease 1 antibody|Kallikrein-1 antibody|Kidney/pancreas/salivary gland kallikrein antibody|Klk 6 antibody|KLK1 antibody|KLK1_HUMAN antibody|Klk6 antibody|KLKR antibody|Tissue kallikrein antibody

UniProt: [P15947](#)

Pathways: [Complement System](#)

Application Details

Application Notes: WB: Concentration: 0.1-0.5 µg/mL, Tested Species: Mouse
IHC-P: Concentration: 0.5-1 µg/mL, Tested Species: Mouse, Epitope Retrieval by Heat: Boiling the paraffin sections in 10 mM citrate buffer, pH 6.0, for 20 mins is required for the staining of formalin/paraffin sections.
Notes: Tested Species: Species with positive results. Predicted Species: Species predicted to be fit for the product based on sequence similarities. Other applications have not been tested.
Optimal dilutions should be determined by end users.

Comment: Antibody can be supported by chemiluminescence kit ABIN921124 in WB, supported by ABIN921231 in IHC(P).

Restrictions: For Research Use only

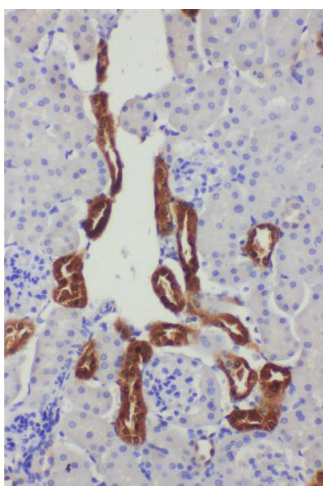
Handling

Format:	Lyophilized
Reconstitution:	Add 0.2 mL of distilled water will yield a concentration of 500 µg/mL.
Concentration:	500 µg/mL
Buffer:	Each vial contains 5 mg BSA, 0.9 mg NaCl, 0.2 mg Na ₂ HPO ₄ , 0.05 mg Thimerosal, 0.05 mg Sodium azide.
Preservative:	Thimerosal (Merthiolate), Sodium azide
Precaution of Use:	This product contains Sodium azide and Thimerosal (Merthiolate): POISONOUS AND HAZARDOUS SUBSTANCES which should be handled by trained staff only.
Handling Advice:	Avoid repeated freezing and thawing.
Storage:	4 °C/-20 °C
Storage Comment:	At -20°C for one year. After reconstitution, at 4°C for one month. It can also be aliquotted and stored frozen at -20 °C for a longer time. Avoid repeated freezing and thawing.
Expiry Date:	12 months

Publications

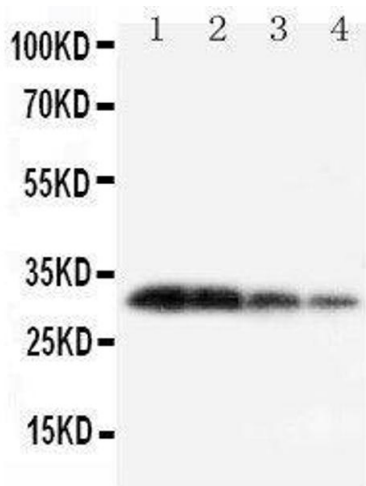
Product cited in:	Liu, Mei, Xu, Yu, Shi, Zhang, Wang, Zhang, Gao, Zhang, He: "Dual Receptor Recognizing Cell Penetrating Peptide for Selective Targeting, Efficient Intratumoral Diffusion and Synthesized Anti-Glioma Therapy." in: Theranostics , Vol. 6, Issue 2, pp. 177-91, (2017) (PubMed).
-------------------	--

Images



Immunohistochemistry

Image 1. Anti-Kallikrein 1 antibody, IHC(P) IHC(P): Mouse Kidney Tissue



Western Blotting

Image 2. Lane 4: Recombinant Mouse KLK1 Protein 1.25ng