

Datasheet for ABIN3043125
anti-Lipocalin 1 antibody (Middle Region)

2 Images

[Go to Product page](#)

Overview

Quantity:	100 µg
Target:	Lipocalin 1 (LCN1)
Binding Specificity:	AA 110-124, Middle Region
Reactivity:	Human
Host:	Rabbit
Clonality:	Polyclonal
Conjugate:	This Lipocalin 1 antibody is un-conjugated
Application:	Western Blotting (WB), Immunohistochemistry (Paraffin-embedded Sections) (IHC (p))

Product Details

Purpose:	Rabbit IgG polyclonal antibody for Lipocalin-1(LCN1) detection. Tested with WB, IHC-P in Human.
Immunogen:	A synthetic peptide corresponding to a sequence in the middle region of human LCN1(110-124aa HVKDHYIFYCEGELH).
Sequence:	HVKDHYIFYC EGELH
Isotype:	IgG
Cross-Reactivity (Details):	No cross reactivity with other proteins.
Characteristics:	Rabbit IgG polyclonal antibody for Lipocalin-1(LCN1) detection. Tested with WB, IHC-P in Human. Gene Name: lipocalin 1 Protein Name: Lipocalin-1

Product Details

Purification: Immunogen affinity purified.

Target Details

Target: Lipocalin 1 (LCN1)

Alternative Name: LCN1 ([LCN1 Products](#))

Background: Lipocalin-1(LCN1), also known as PREALBUMIN, TEAR or VEGP, is a protein that in humans is encoded by the LCN1 gene. Lipocalin-1 is a member of the lipocalin family of small secretory proteins, which is mapped on 9q34.3. Lipocalin-1 is the primary lipid binding protein in tears and is overproduced in response to multiple stimuli including infection and stress. It may be a marker for chromosome aneuploidy as well as an autoantigen in Sjogren's syndrome. LCN1 inhibits the cysteine-protease papain in vitro, similar to cystatins. And LCN1 plays a role in the nonimmunologic defense and in the control of inflammatory processes in oral and ocular tissues. The investigations presented the first clear evidence that LCN1 is induced in infection or inflammation and supported the idea that this lipocalin functions as a physiologic protection factor of epithelia in vivo.

Synonyms: LCN1 antibody|LCN1_HUMAN antibody|Lipocalin 1(protein migrating faster than albumin, tear prealbumin) antibody|Lipocalin 1 like 2 antibody|Lipocalin-1 antibody|PMFA antibody|Tear lipocalin antibody|Tear prealbumin antibody|Tlc antibody|TP antibody|VEG protein antibody|VEGP antibody|Von Ebner gland protein antibody

UniProt: [P31025](#)

Application Details

Application Notes: WB: Concentration: 0.1-0.5 µg/mL, Tested Species: Human
IHC-P: Concentration: 0.5-1 µg/mL, Tested Species: Human, Epitope Retrieval by Heat: Boiling the paraffin sections in 10 mM citrate buffer, pH 6.0, for 20 mins is required for the staining of formalin/paraffin sections.
Notes: Tested Species: Species with positive results. Predicted Species: Species predicted to be fit for the product based on sequence similarities. Other applications have not been tested.
Optimal dilutions should be determined by end users.

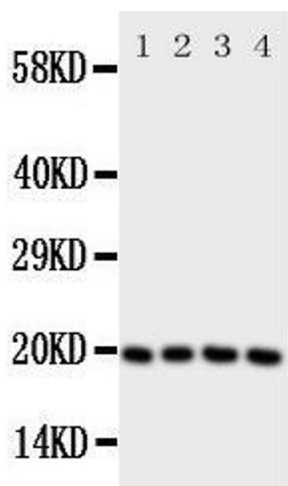
Comment: Antibody can be supported by chemiluminescence kit ABIN921124 in WB, supported by ABIN921231 in IHC(P).

Restrictions: For Research Use only

Handling

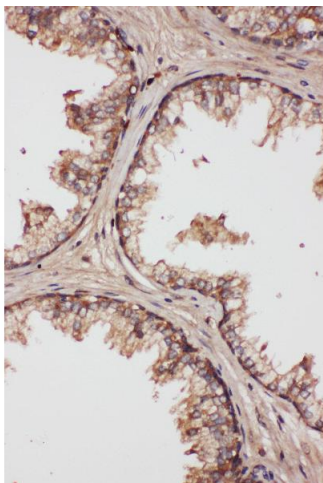
Format:	Lyophilized
Reconstitution:	Add 0.2 mL of distilled water will yield a concentration of 500 µg/mL.
Concentration:	500 µg/mL
Buffer:	Each vial contains 5 mg BSA, 0.9 mg NaCl, 0.2 mg Na ₂ HPO ₄ , 0.05 mg Thimerosal, 0.05 mg Sodium azide.
Preservative:	Thimerosal (Merthiolate), Sodium azide
Precaution of Use:	This product contains Sodium azide and Thimerosal (Merthiolate): POISONOUS AND HAZARDOUS SUBSTANCES which should be handled by trained staff only.
Handling Advice:	Avoid repeated freezing and thawing.
Storage:	4 °C/-20 °C
Storage Comment:	At -20°C for one year. After reconstitution, at 4°C for one month. It can also be aliquotted and stored frozen at -20 °C for a longer time. Avoid repeated freezing and thawing.
Expiry Date:	12 months

Images



Western Blotting

Image 1.



Immunohistochemistry

Image 2. Anti-LCN1 antibody, IHC(P) IHC(P): Human Prostatic Cancer Tissue