

Datasheet for ABIN3043135
anti-SERPINA4 antibody (C-Term)

3 Images

[Go to Product page](#)

Overview

Quantity:	100 µg
Target:	SERPINA4
Binding Specificity:	AA 384-401, C-Term
Reactivity:	Human
Host:	Rabbit
Clonality:	Polyclonal
Conjugate:	This SERPINA4 antibody is un-conjugated
Application:	Western Blotting (WB), Immunohistochemistry (Paraffin-embedded Sections) (IHC (p))

Product Details

Purpose:	Rabbit IgG polyclonal antibody for Kallistatin(SERPINA4) detection. Tested with WB, IHC-P in Human.
Immunogen:	A synthetic peptide corresponding to a sequence at the C-terminus of human Kallistatin(384-401aa AIKFFSAQTNRHILRFNR).
Sequence:	AIKFFSAQTN RHILRFNR
Isotype:	IgG
Cross-Reactivity (Details):	No cross reactivity with other proteins.
Characteristics:	<p>Rabbit IgG polyclonal antibody for Kallistatin(SERPINA4) detection. Tested with WB, IHC-P in Human.</p> <p>Gene Name: serpin peptidase inhibitor, clade A(alpha-1 antiproteinase, antitrypsin), member 4</p> <p>Protein Name: Kallistatin</p>

Product Details

Purification: Immunogen affinity purified.

Target Details

Target: SERPINA4

Alternative Name: SERPINA4 ([SERPINA4 Products](#))

Background: Serpina 4, also called Kallistatin, PI4 or TISSUE KALLIKREIN INHIBITOR, is a protein that in humans is encoded by the SERPINA4 gene. The serpina4 is a member of the serpin superfamily and represents a major inhibitor of human tissue kallikrein in the circulation. The SERPINA4 gene is localized to 14q32.13. The translated amino acid sequence of serpina4 matches the protein sequence and shares 44 to 46 % sequence identity with other serpin family members. Kallistatin is a serine proteinase inhibitor (serpin) and a heparin-binding protein. It is localized in vascular smooth muscle cells and endothelial cells of blood vessels, suggesting that it may be involved in the regulation of vascular function. And serpina4 also plays a role in neointima hyperplasia.

Synonyms: KAIN_HUMAN antibody|KAL antibody|Kallikrein binding protein antibody|Kallikrein inhibitor antibody|Kallistatin antibody|KBP antibody|KLST antibody|KST antibody|MGC108582 antibody|Peptidase inhibitor 4 antibody|PI-4 antibody|PI4 antibody|Protease inhibitor 4(kallistatin) antibody|Protease inhibitor 4 antibody|Serine(or cysteine) proteinase inhibitor, clade A(alpha 1 antiproteinase, antitrypsin), member 4 antibody|Serp A4 antibody|Serp peptidase inhibitor clade A member 4 antibody|Serp peptidase inhibitor, clade A(alpha 1 antiproteinase, antitrypsin), member 4 antibody|SERPINA4 antibody

UniProt: [P29622](#)

Application Details

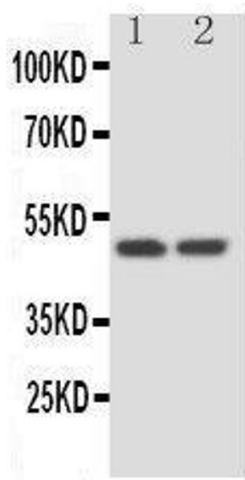
Application Notes: WB: Concentration: 0.1-0.5 µg/mL, Tested Species: Human
IHC-P: Concentration: 0.5-1 µg/mL, Tested Species: Human, Epitope Retrieval by Heat: Boiling the paraffin sections in 10 mM citrate buffer, pH 6.0, for 20 mins is required for the staining of formalin/paraffin sections.
Notes: Tested Species: Species with positive results. Predicted Species: Species predicted to be fit for the product based on sequence similarities. Other applications have not been tested.
Optimal dilutions should be determined by end users.

Comment: Antibody can be supported by chemiluminescence kit ABIN921124 in WB, supported by

Application Details

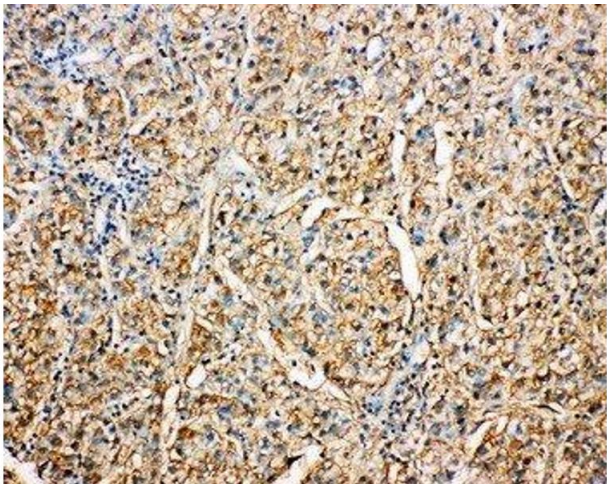
	ABIN921231 in IHC(P).
Restrictions:	For Research Use only
Handling	
Format:	Lyophilized
Reconstitution:	Add 0.2 mL of distilled water will yield a concentration of 500 µg/mL.
Concentration:	500 µg/mL
Buffer:	Each vial contains 5 mg BSA, 0.9 mg NaCl, 0.2 mg Na2HPO4, 0.05 mg Thimerosal, 0.05 mg Sodium azide.
Preservative:	Thimerosal (Merthiolate), Sodium azide
Precaution of Use:	This product contains Sodium azide and Thimerosal (Merthiolate): POISONOUS AND HAZARDOUS SUBSTANCES which should be handled by trained staff only.
Handling Advice:	Avoid repeated freezing and thawing.
Storage:	4 °C/-20 °C
Storage Comment:	At -20°C for one year. After reconstitution, at 4°C for one month. It can also be aliquotted and stored frozen at -20 °C for a longer time. Avoid repeated freezing and thawing.
Expiry Date:	12 months

Validation report #100035 for Immunohistochemistry (IHC)



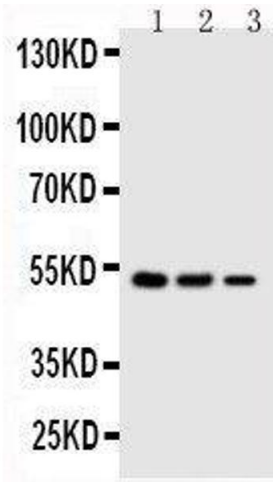
Western Blotting

Image 1. Anti-Kallistatin antibody, Western blotting Lane 1: HELA Cell Lysate Lane 2: SKOV Cell Lysate



Immunohistochemistry

Image 2. Anti-Kallistatin antibody, IHC(P) IHC(P): Human Liver Cancer Tissue



Western Blotting

Image 3. Anti-Kallistatin antibody, Western blotting Lane 1: SMMC Cell Lysate Lane 2: COLO320 Cell Lysate Lane 3: JURKAT Cell Lysate