

Datasheet for ABIN3043138
anti-Kallikrein 5 antibody (C-Term)[Go to Product page](#)

2 Images

Overview

Quantity:	100 µg
Target:	Kallikrein 5 (KLK5)
Binding Specificity:	AA 278-293, C-Term
Reactivity:	Mouse, Rat
Host:	Rabbit
Clonality:	Polyclonal
Conjugate:	This Kallikrein 5 antibody is un-conjugated
Application:	Western Blotting (WB), Immunohistochemistry (Paraffin-embedded Sections) (IHC (p))

Product Details

Purpose:	Rabbit IgG polyclonal antibody for Kallikrein 1-related peptidase b5(KLK5) detection. Tested with WB, IHC-P in Mouse,Rat.
Immunogen:	A synthetic peptide corresponding to a sequence at the C-terminus of mouse Kallikrein 5(278-293aa NLCEVVKWIKDTMNSN), different from the related rat sequence by three amino acids.
Sequence:	NLCEVVKWIK DTMNSN
Isotype:	IgG
Cross-Reactivity (Details):	No cross reactivity with other proteins.
Characteristics:	<p>Rabbit IgG polyclonal antibody for Kallikrein 1-related peptidase b5(KLK5) detection. Tested with WB, IHC-P in Mouse,Rat.</p> <p>Gene Name: kallikrein-related peptidase 5</p> <p>Protein Name: Kallikrein 1-related peptidase b5</p>

Product Details

Purification: Immunogen affinity purified.

Target Details

Target: Kallikrein 5 (KLK5)

Alternative Name: KLK5 ([KLK5 Products](#))

Background: KLK5(Kallikrein-related peptidase 5), formerly known as stratum corneum tryptic enzyme(SCTE) or KLKL2, is a serine protease expressed in the epidermis. The KLK5 gene is one of the fifteen kallikrein subfamily members which is located on 19q13.41. KLK5 has been suggested to regulate cell shedding in conjunction with KLK7 and KLK14, given its ability to degrade proteins which form the extracellular component of cell junctions in the stratum corneum. The KLK5 gene contains 5 coding exons spanning 9.3. KLK5 expression is upregulated in a breast cancer cell line in the presence of estrogens and progestins and is associated with more aggressive forms of epithelial ovarian carcinoma.

Synonyms: HK5 antibody|Kallikrein 5 antibody|Kallikrein L2 antibody|Kallikrein Like 2 antibody|Kallikrein like protein 2 antibody|Kallikrein related peptidase 5 antibody|Kallikrein-5 antibody|Kallikrein-like protein 2 antibody|Kallikrein5 antibody|KLK 5 antibody|KLK L2 antibody|KLK-L2 antibody|KLK5 antibody|KLK5_HUMAN antibody|KLKL 2 antibody|KLKL2 antibody|SCTE antibody|Stratum Corneum Tryptic Enzyme antibody|UNQ570/PRO1132 antibody

UniProt: [Q9D140](#)

Pathways: [Complement System](#), [Regulation of G-Protein Coupled Receptor Protein Signaling](#)

Application Details

Application Notes: WB: Concentration: 0.1-0.5 µg/mL, Tested Species: Mouse
IHC-P: Concentration: 0.5-1 µg/mL, Tested Species: Rat, Predicted Species: Mouse, Epitope Retrieval by Heat: Boiling the paraffin sections in 10 mM citrate buffer, pH 6.0, for 20 mins is required for the staining of formalin/paraffin sections.
Notes: Tested Species: Species with positive results. Predicted Species: Species predicted to be fit for the product based on sequence similarities. Other applications have not been tested.
Optimal dilutions should be determined by end users.

Comment: Antibody can be supported by chemiluminescence kit ABIN921124 in WB, supported by ABIN921231 in IHC(P).

Application Details

Restrictions: For Research Use only

Handling

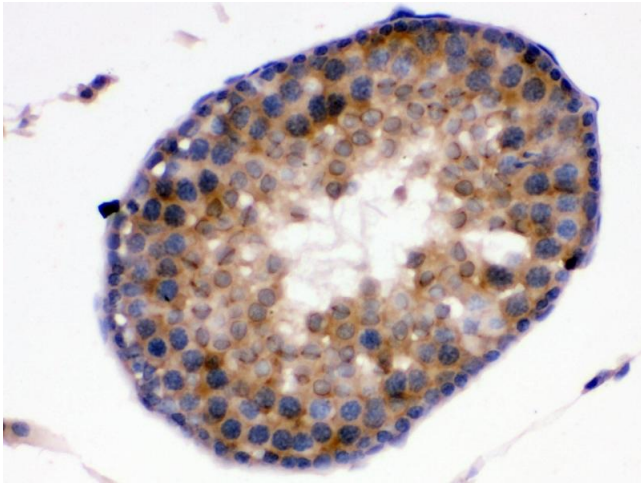
Format:	Lyophilized
Reconstitution:	Add 0.2 mL of distilled water will yield a concentration of 500 µg/mL.
Concentration:	500 µg/mL
Buffer:	Each vial contains 5 mg BSA, 0.9 mg NaCl, 0.2 mg Na ₂ HPO ₄ , 0.05 mg Thimerosal, 0.05 mg Sodium azide.
Preservative:	Thimerosal (Merthiolate), Sodium azide
Precaution of Use:	This product contains Sodium azide and Thimerosal (Merthiolate): POISONOUS AND HAZARDOUS SUBSTANCES which should be handled by trained staff only.
Handling Advice:	Avoid repeated freezing and thawing.
Storage:	4 °C/-20 °C
Storage Comment:	At -20°C for one year. After reconstitution, at 4°C for one month. It can also be aliquotted and stored frozen at -20 °C for a longer time. Avoid repeated freezing and thawing.
Expiry Date:	12 months

Validation report #100035 for Immunohistochemistry (IHC)



Western Blotting

Image 1. Anti-Kallikrein 5 antibody, Western blotting WB: Mouse Liver Tissue Lysate



Immunohistochemistry

Image 2. Anti-Kallikrein 5 antibody, IHC(P) IHC(P): Rat Testis
Tissue