

Datasheet for ABIN3043140
anti-Kallikrein 2 antibody (C-Term)

3 Images

[Go to Product page](#)

Overview

Quantity:	100 µg
Target:	Kallikrein 2 (KLK2)
Binding Specificity:	AA 243-261, C-Term
Reactivity:	Human
Host:	Rabbit
Clonality:	Polyclonal
Application:	Western Blotting (WB), Immunohistochemistry (Paraffin-embedded Sections) (IHC (p))

Product Details

Purpose:	Rabbit IgG polyclonal antibody for Kallikrein-2(KLK2) detection. Tested with WB, IHC-P in Human.
Immunogen:	A synthetic peptide corresponding to a sequence at the C-terminus of human Kallikrein 2(243-261aa YTKVVHYRKWIKDTIAANP).
Sequence:	YTKVVHYRKW IKDTIAANP
Isotype:	IgG
Cross-Reactivity (Details):	No cross reactivity with other proteins.
Characteristics:	<p>Rabbit IgG polyclonal antibody for Kallikrein-2(KLK2) detection. Tested with WB, IHC-P in Human.</p> <p>Gene Name: kallikrein-related peptidase 2</p> <p>Protein Name: Kallikrein-2</p>
Purification:	Immunogen affinity purified.

Target Details

Target:	Kallikrein 2 (KLK2)
Alternative Name:	KLK2 (KLK2 Products)
Background:	<p>KLK2(KALLIKREIN 2), also called GLANDULAR or PROSTATIC, is a protein that in humans is encoded by the KLK2 gene, and is particularly associated with prostatic tissue. The KLK2 is a member of glandular kallikrein gene family that comprises 25 to 30 highly homologous genes that encode specific proteases involved in the processing of biologically active peptides. The KLK2 gene is mapped to 19q13.33. And the KLK2 gene contains 5 exons. An alternative KLK2 transcript, which they call KLK2-linked molecule(KLM), that arises from the use of an alternate donor site within intron 1. KLM shares only the N-terminal 15-amino acid signal peptide with the original KLK2 protein, the mature proteins display no similarity.</p> <p>Synonyms: Glandular kallikrein 2 antibody Glandular kallikrein-1 antibody hGK 1 antibody hGK-1 antibody hK2 antibody Kallikrein 2 prostatic antibody Kallikrein related peptidase 2 antibody kallikrein, glandular antibody Kallikrein, prostatic antibody Kallikrein-2 antibody KLK 2 antibody Klk-2 antibody Klk2 antibody KLK2_HUMAN antibody KLK2A 2 antibody KLK2A2 antibody MGC12201 antibody Tissue kallikrein 2 antibody Tissue kallikrein-2 antibody Ton antibody</p>
UniProt:	P20151
Pathways:	Complement System

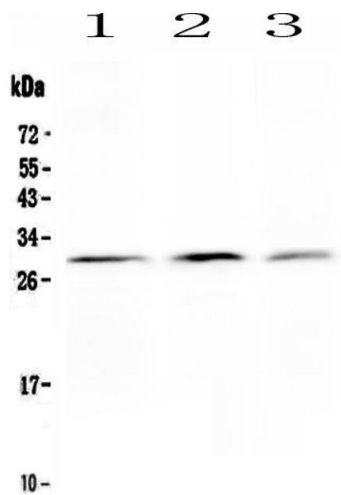
Application Details

Application Notes:	<p>WB: Concentration: 0.1-0.5 µg/mL, Tested Species: Human</p> <p>IHC-P: Concentration: 0.5-1 µg/mL, Tested Species: Human, Epitope Retrieval by Heat: Boiling the paraffin sections in 10 mM citrate buffer, pH 6.0, for 20 mins is required for the staining of formalin/paraffin sections.</p> <p>Notes: Tested Species: Species with positive results. Predicted Species: Species predicted to be fit for the product based on sequence similarities. Other applications have not been tested.</p> <p>Optimal dilutions should be determined by end users.</p>
Comment:	Antibody can be supported by chemiluminescence kit ABIN921124 in WB, supported by ABIN921231 in IHC(P).
Restrictions:	For Research Use only

Handling

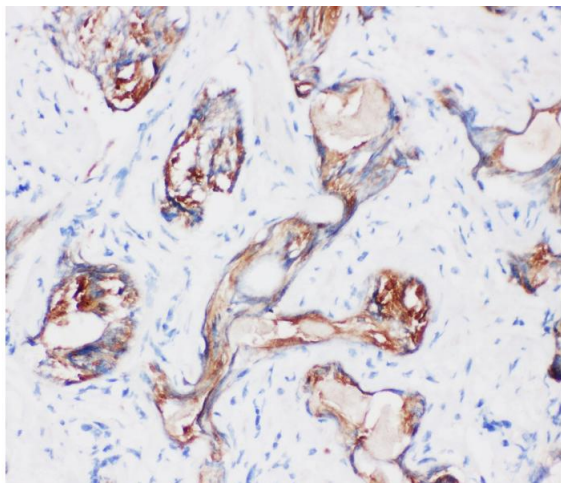
Format:	Lyophilized
Reconstitution:	Add 0.2 mL of distilled water will yield a concentration of 500 µg/mL.
Concentration:	500 µg/mL
Buffer:	Each vial contains 5 mg BSA, 0.9 mg NaCl, 0.2 mg Na ₂ HPO ₄ , 0.05 mg Thimerosal, 0.05 mg Sodium azide.
Preservative:	Thimerosal (Merthiolate), Sodium azide
Precaution of Use:	This product contains Sodium azide and Thimerosal (Merthiolate): POISONOUS AND HAZARDOUS SUBSTANCES which should be handled by trained staff only.
Handling Advice:	Avoid repeated freezing and thawing.
Storage:	4 °C/-20 °C
Storage Comment:	At -20°C for one year. After reconstitution, at 4°C for one month. It can also be aliquotted and stored frozen at -20 °C for a longer time. Avoid repeated freezing and thawing.
Expiry Date:	12 months

Images



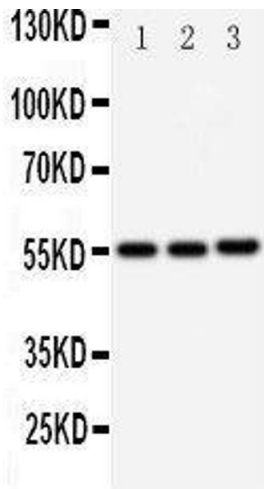
Western Blotting

Image 1. Anti-Kallikrein 2 antibody, Western blottingAll lanes: Anti Kallikrein 2 at 0.5ug/ml Lane 1: PANC Whole Cell Lysate at 40ug Lane 2: HELA Whole Cell Lysate at 40ug Lane 3: 293T Whole Cell Lysate at 40ug Predicted bind size: 29KD Observed bind size: 29KD



Immunohistochemistry

Image 2. Anti-Kallikrein 2 antibody, IHC(P) IHC(P): Human Prostatic Cancer Tissue



Western Blotting

Image 3.