

Datasheet for ABIN3043204
anti-CXCL16 antibody (Middle Region)

3 Images

[Go to Product page](#)

Overview

Quantity:	100 µg
Target:	CXCL16
Binding Specificity:	AA 103-116, Middle Region
Reactivity:	Mouse
Host:	Rabbit
Clonality:	Polyclonal
Application:	Western Blotting (WB), Immunohistochemistry (Paraffin-embedded Sections) (IHC (p))

Product Details

Purpose:	Rabbit IgG polyclonal antibody for C-X-C motif chemokine 16(CXCL16) detection. Tested with WB, IHC-P in Mouse.
Immunogen:	A synthetic peptide corresponding to a sequence in the middle region of mouse CXCL16(103-116aa HGKSFHHQKHLPPQA).
Sequence:	HGKSFHHQKH LPQA
Isotype:	IgG
Cross-Reactivity (Details):	No cross reactivity with other proteins.
Characteristics:	<p>Rabbit IgG polyclonal antibody for C-X-C motif chemokine 16(CXCL16) detection. Tested with WB, IHC-P in Mouse.</p> <p>Gene Name: chemokine(C-X-C motif) ligand 16</p> <p>Protein Name: C-X-C motif chemokine 16</p>
Purification:	Immunogen affinity purified.

Target Details

Target:	CXCL16
Alternative Name:	CXCL16 (CXCL16 Products)
Background:	<p>CXCL16, Chemokine(C-X-C motif) ligand 16, is a small cytokine belonging to the CXC chemokine family. Larger than other chemokines(with 254 amino acids), CXCL16 is composed of a CXC chemokine domain, a mucin-like stalk, a transmembrane domain and a cytoplasmic tail containing a potential tyrosine phosphorylation site that may bind SH2. By somatic cell hybrid analysis, the CXCL16 gene is mapped to 17p13, a locus separate from all other known chemokines. Chemotaxis assays found that CXCL16 induced a strong chemotactic response in activated CD8 T cells. In addition, CXCL16 induced calcium mobilization.</p> <p>Synonyms: C-X-C motif chemokine 16 antibody Chemokine(C X C motif) ligand 16 antibody Chemokine, CXC motif, ligand 16 antibody CXC chemokine ligand 16 antibody Cxl16 antibody CXCLG16 antibody CXCL16_HUMAN antibody Scavenger receptor for phosphatidylserine and oxidized low density lipoprotein antibody SCYB16 antibody Small inducible cytokine B16 precursor antibody Small-inducible cytokine B16 antibody SR-PSOX antibody SRPSOX antibody Transmembrane chemokine CXCL16 antibody UNQ2759/PRO6714 antibody</p>

Application Details

Application Notes:	<p>WB: Concentration: 0.1-0.5 µg/mL, Tested Species: Mouse</p> <p>IHC-P: Concentration: 0.5-1 µg/mL, Tested Species: Mouse, Epitope Retrieval by Heat: Boiling the paraffin sections in 10 mM citrate buffer, pH 6.0, for 20 mins is required for the staining of formalin/paraffin sections.</p> <p>Notes: Tested Species: Species with positive results. Predicted Species: Species predicted to be fit for the product based on sequence similarities. Other applications have not been tested.</p> <p>Optimal dilutions should be determined by end users.</p>
Comment:	Antibody can be supported by chemiluminescence kit ABIN921124 in WB, supported by ABIN921231 in IHC(P).
Restrictions:	For Research Use only

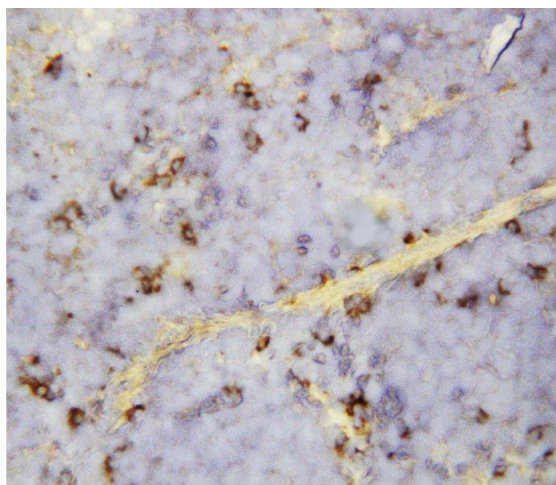
Handling

Format:	Lyophilized
Reconstitution:	Add 0.2 mL of distilled water will yield a concentration of 500 µg/mL.

Handling

Concentration:	500 µg/mL
Buffer:	Each vial contains 5 mg BSA, 0.9 mg NaCl, 0.2 mg Na ₂ HPO ₄ , 0.05 mg Thimerosal, 0.05 mg Sodium azide.
Preservative:	Thimerosal (Merthiolate), Sodium azide
Precaution of Use:	This product contains Sodium azide and Thimerosal (Merthiolate): POISONOUS AND HAZARDOUS SUBSTANCES which should be handled by trained staff only.
Handling Advice:	Avoid repeated freezing and thawing.
Storage:	4 °C/-20 °C
Storage Comment:	At -20°C for one year. After reconstitution, at 4°C for one month. It can also be aliquotted and stored frozen at -20 °C for a longer time. Avoid repeated freezing and thawing.
Expiry Date:	12 months

Images



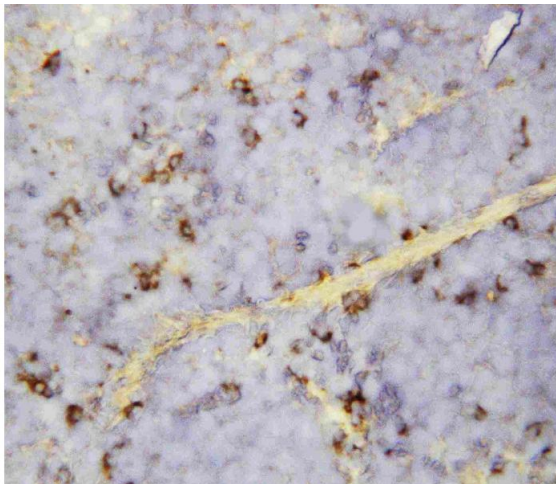
Immunohistochemistry

Image 1. Anti-CXCL16 antibody, IHC(P) IHC(P): Mouse Spleen Tissue



Western Blotting

Image 2. Anti-CXCL16 antibody, Western blotting Lane 1: Recombinant Mouse CXCL16 Protein 10ng Lane 2: Recombinant Mouse CXCL16 Protein 5ng Lane 3: Recombinant Mouse CXCL16 Protein 2.5ng



Immunohistochemistry

Image 3. Anti-CXCL16 antibody, IHC(P): Mouse Spleen Tissue