

Datasheet for ABIN3043219
anti-Caspase 6 antibody (N-Term)



[Go to Product page](#)

7 Images

Overview

Quantity:	100 µg
Target:	Caspase 6 (CASP6)
Binding Specificity:	AA 24-44, N-Term
Reactivity:	Human
Host:	Rabbit
Clonality:	Polyclonal
Conjugate:	This Caspase 6 antibody is un-conjugated
Application:	Western Blotting (WB), Immunohistochemistry (Paraffin-embedded Sections) (IHC (p))

Product Details

Purpose:	Rabbit IgG polyclonal antibody for Caspase-6(CASP6) detection. Tested with WB, IHC-P in Human.
Immunogen:	A synthetic peptide corresponding to a sequence at the N-terminus of human Caspase-6(P18)(24-44aa AFYKREMFDPAEKYKMDHRRR).
Sequence:	AFYKREMFDP AEKYKMDHRR R
Isotype:	IgG
Cross-Reactivity (Details):	No cross reactivity with other proteins.
Characteristics:	Rabbit IgG polyclonal antibody for Caspase-6(CASP6) detection. Tested with WB, IHC-P in Human. Gene Name: caspase 6, apoptosis-related cysteine peptidase Protein Name: Caspase-6(CASP-6)

Product Details

Purification: Immunogen affinity purified.

Target Details

Target: Caspase 6 (CASP6)

Alternative Name: CASP6 ([CASP6 Products](#))

Background: Caspase 6 is an enzyme that in humans is encoded by the caspase 6 gene. This gene encodes a protein that is a member of the cysteine-aspartic acid protease(caspase) family. Using radiation hybrid mapping, the Caspase 6 gene is localized to human chromosome 4q25-q26. Caspase 6 functions as a downstream enzyme in the caspase activation cascade. And Caspase 6 can cleave lamin A to its signature apoptotic fragment.

Synonyms: Apoptosis Related Cysteine Protease antibody|Apoptotic cysteine protease MCH2 antibody|Apoptotic protease MCH 2 antibody|Apoptotic protease Mch-2 antibody|Apoptotic protease MCH2 antibody|Casp 6 antibody|CASP-6 antibody|Casp6 antibody|Caspase 6 antibody|Caspase 6 apoptosis related cysteine protease antibody|Caspase 6 precursor antibody|Caspase 6, apoptosis related cysteine peptidase antibody|Caspase-6 subunit p18 antibody|Caspase6 antibody|Human cysteine protease Mch2 isoform alpha antibody|Mch 2 antibody|Mch2 antibody|OTTHUMP00000162742 antibody|OTTHUMP00000162743 antibody

UniProt: [P55212](#)

Pathways: [Apoptosis, Caspase Cascade in Apoptosis](#)

Application Details

Application Notes: WB: Concentration: 0.1-0.5 µg/mL, Tested Species: Human
IHC-P: Concentration: 0.5-1 µg/mL, Tested Species: Human, Epitope Retrieval by Heat: Boiling the paraffin sections in 10 mM citrate buffer, pH 6.0, for 20 mins is required for the staining of formalin/paraffin sections.
Notes: Tested Species: Species with positive results. Predicted Species: Species predicted to be fit for the product based on sequence similarities. Other applications have not been tested.
Optimal dilutions should be determined by end users.

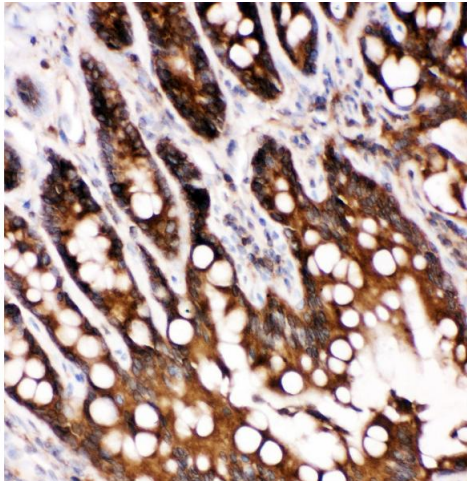
Comment: Antibody can be supported by chemiluminescence kit ABIN921124 in WB, supported by ABIN921231 in IHC(P).

Restrictions: For Research Use only

Handling

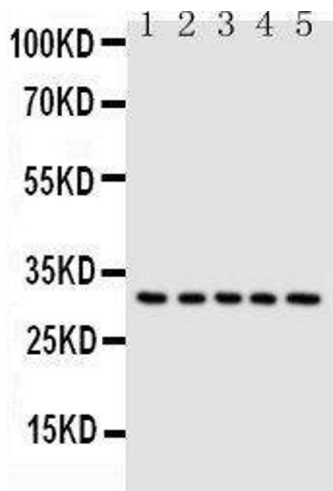
Format:	Lyophilized
Reconstitution:	Add 0.2 mL of distilled water will yield a concentration of 500 µg/mL.
Concentration:	500 µg/mL
Buffer:	Each vial contains 5 mg BSA, 0.9 mg NaCl, 0.2 mg Na ₂ HPO ₄ , 0.05 mg Thimerosal, 0.05 mg Sodium azide.
Preservative:	Thimerosal (Merthiolate), Sodium azide
Precaution of Use:	This product contains Sodium azide and Thimerosal (Merthiolate): POISONOUS AND HAZARDOUS SUBSTANCES which should be handled by trained staff only.
Handling Advice:	Avoid repeated freezing and thawing.
Storage:	4 °C/-20 °C
Storage Comment:	At -20°C for one year. After reconstitution, at 4°C for one month. It can also be aliquotted and stored frozen at -20 °C for a longer time. Avoid repeated freezing and thawing.
Expiry Date:	12 months

Images



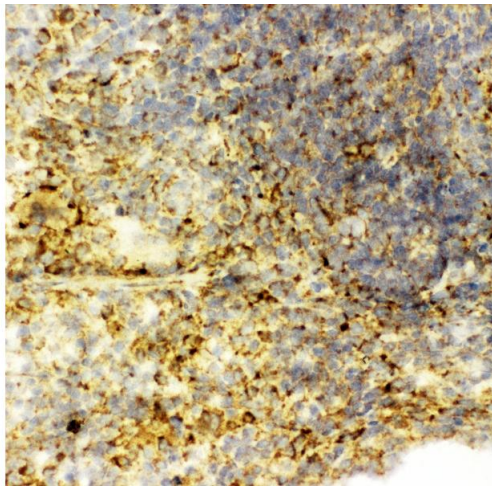
Immunohistochemistry

Image 1. Anti-Caspase-6(P18) antibody, IHC(P) IHC(P): Rat Intestine Tissue



Western Blotting

Image 2. Anti-Caspase-6(P18) antibody, Western blotting
Lane 1: MCF-7 Cell Lysate Lane 2: HELA Cell Lysate Lane 3:
JURKAT Cell Lysate Lane 4: CEM Cell Lysate Lane 5: SW620
Cell Lysate



Immunohistochemistry

Image 3. Anti-Caspase-6(P18) antibody, IHC(F) IHC(F): Rat
Spleen Tissue

Please check the [product details page](#) for more images. Overall 7 images are available for ABIN3043219.