



[Go to Product page](#)

Datasheet for ABIN3043243

anti-IL16 antibody (AA 1212-1332)

3 Images

Overview

Quantity:	100 µg
Target:	IL16
Binding Specificity:	AA 1212-1332
Reactivity:	Human
Host:	Rabbit
Clonality:	Polyclonal
Conjugate:	This IL16 antibody is un-conjugated
Application:	Western Blotting (WB), Immunocytochemistry (ICC), Immunohistochemistry (Paraffin-embedded Sections) (IHC (p))

Product Details

Purpose:	Rabbit IgG polyclonal antibody for Pro-interleukin-16(IL16) detection. Tested with WB, IHC-P, ICC in Human.
Immunogen:	E.coli-derived human IL16 recombinant protein (Position: S1212-S1332). Human IL16 shares 86% amino acid (aa) sequence identity with mouse IL16.
Isotype:	IgG
Cross-Reactivity (Details):	No cross reactivity with other proteins.
Characteristics:	Rabbit IgG polyclonal antibody for Pro-interleukin-16(IL16) detection. Tested with WB, IHC-P, ICC in Human. Gene Name: interleukin 16 Protein Name: Pro-interleukin-16

Product Details

Purification: Immunogen affinity purified.

Target Details

Target: IL16

Alternative Name: IL16 ([IL16 Products](#))

Background: Interleukin 16 (IL-16) is a cytokine that released by a variety of cells (including lymphocytes and some epithelial cells) that has been characterized as a chemoattractant for certain immune cells expressing the cell surface molecule CD4. It is mapped to 15q25.1. IL-16 was originally described as a factor that could attract activated T cells in humans. It was previously called lymphocyte chemoattractant factor (LCF), and the augmentation of IL16 stimulation by CCR5 plays a role in regulation of Th1 cell recruitment and activation at sites of inflammation.

Synonyms: HsT19289 antibody|IL-16 antibody|IL16 antibody|IL16_HUMAN antibody|Interleukin 16 precursor antibody|Interleukin-16 antibody|LCF antibody|Lymphocyte chemoattractant factor antibody|Neuronal interleukin 16 antibody|NIL16 antibody|PrIL16 antibody

Gene ID: 3603

UniProt: [Q14005](#)

Application Details

Application Notes: WB: Concentration: 0.1-0.5 µg/mL, Tested Species: Human, The detection limit for IL16 is approximately 0.25 ng/lane under reducing conditions.
IHC-P: Concentration: 0.5-1 µg/mL, Tested Species: Human, Epitope Retrieval by Heat: Boiling the paraffin sections in 10 mM citrate buffer, pH 6.0, for 20 mins is required for the staining of formalin/paraffin sections.
ICC: Concentration: 0.5-1 µg/mL, Tested Species: Human
Notes: Tested Species: Species with positive results. Other applications have not been tested. Optimal dilutions should be determined by end users.

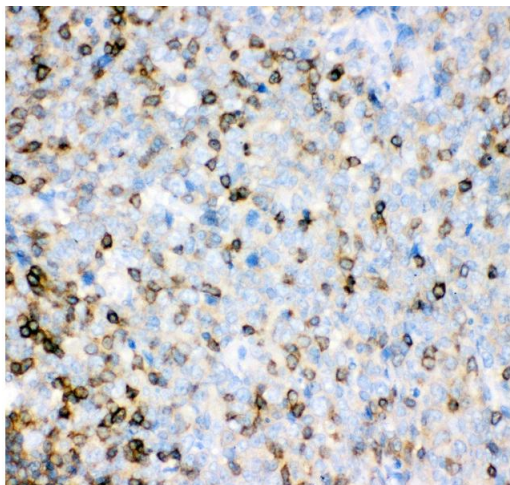
Comment: Antibody can be supported by chemiluminescence kit ABIN921124 in WB, supported by ABIN921231 in IHC(P) and ICC.

Restrictions: For Research Use only

Handling

Format:	Lyophilized
Reconstitution:	Add 0.2 mL of distilled water will yield a concentration of 500 µg/mL.
Concentration:	500 µg/mL
Buffer:	Each vial contains 5 mg BSA, 0.9 mg NaCl, 0.2 mg Na ₂ HPO ₄ , 0.05 mg Sodium azide.
Preservative:	Sodium azide
Precaution of Use:	This product contains Sodium azide: a POISONOUS AND HAZARDOUS SUBSTANCE which should be handled by trained staff only.
Handling Advice:	Avoid repeated freezing and thawing.
Storage:	4 °C/-20 °C
Storage Comment:	At -20°C for one year. After reconstitution, at 4°C for one month. It can also be aliquotted and stored frozen at -20 °C for a longer time. Avoid repeated freezing and thawing.

Images



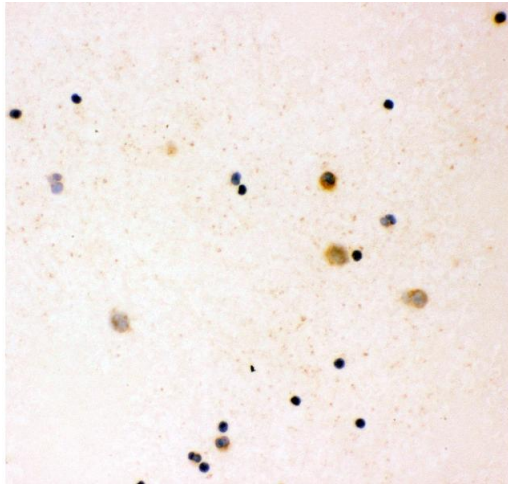
Immunohistochemistry

Image 1. Anti- IL16 antibody, IHC(P) IHC(P): Human Tonsil Tissue



Western Blotting

Image 2.



Immunohistochemistry

Image 3. Anti- IL16 antibody, ICC ICC: Human Cord Blood