

Datasheet for ABIN3043247  
**anti-IL-3 antibody (AA 28-166)**



[Go to Product page](#)

2 Images

## Overview

Quantity:	100 µg
Target:	IL-3
Binding Specificity:	AA 28-166
Reactivity:	Rat
Host:	Rabbit
Clonality:	Polyclonal
Conjugate:	This IL-3 antibody is un-conjugated
Application:	Western Blotting (WB), ELISA

## Product Details

Purpose:	Rabbit IgG polyclonal antibody for Interleukin-3(IL3) detection. Tested with WB, ELISA in Rat.
Immunogen:	E. coli-derived rat IL-3 recombinant protein (Position: S28-C166). Rat IL-3 shares 32% and 55% amino acid (aa) sequence identity with human and mouse IL-3, respectively.
Isotype:	IgG
Cross-Reactivity (Details):	No cross reactivity with other proteins.
Characteristics:	Rabbit IgG polyclonal antibody for Interleukin-3(IL3) detection. Tested with WB, ELISA in Rat. Gene Name: interleukin 3 Protein Name: Interleukin-3
Purification:	Immunogen affinity purified.

# Target Details

Target:	IL-3
Alternative Name:	IL3 ( <a href="#">IL-3 Products</a> )
Background:	<p>Interleukin 3, also known as IL-3, is a protein that in humans is encoded by the IL3 gene. It is mapped to 5q31.1. IL-3 is an interleukin, a type of biological signal (cytokine) that can improve the body's natural response to disease as part of the immune system. It acts by binding to the interleukin-3 receptor. IL-3 stimulates the differentiation of multipotent hematopoietic stem cells into myeloid progenitor cells or, with the addition of IL-7, into lymphoid progenitor cells. In addition, IL-3 stimulates proliferation of all cells in the myeloid lineage (granulocytes, monocytes, and dendritic cells), in conjunction with other cytokines, e.g., Erythropoietin (EPO), Granulocyte macrophage colony-stimulating factor (GM-CSF), and IL-6. IL-3 is secreted by basophils and activated T cells to support growth and differentiation of T cells from the bone marrow in an immune response.</p> <p>Synonyms: Colony stimulating factor multiple antibody Hematopoietic growth factor antibody IL 3 antibody IL-3 antibody IL3 antibody IL3_HUMAN antibody Interleukin 3 (colony stimulating factor, multiple) antibody Interleukin 3 antibody Interleukin-3 antibody Mast cell growth factor antibody MCGF antibody MGC79398 antibody MGC79399 antibody Multi CSF antibody Multilineage colony stimulating factor antibody Multipotential colony stimulating factor antibody Multipotential colony-stimulating factor antibody OTTHUMP00000065963 antibody P cell stimulating factor antibody P-cell-stimulating factor antibody</p>
Gene ID:	24495
UniProt:	<a href="#">P04823</a>
Pathways:	<a href="#">JAK-STAT Signaling</a> , <a href="#">Regulation of Carbohydrate Metabolic Process</a> , <a href="#">Autophagy</a>

# Application Details

Application Notes:	<p>WB: Concentration: 0.1-0.5 µg/mL, Tested Species: Rat, The detection limit for IL-3 is approximately 0.25 ng/lane under reducing conditions.</p> <p>ELISA: Concentration: 0.1-0.5 µg/mL, Tested Species: Rat</p> <p>Notes: Tested Species: Species with positive results.</p> <p>Other applications have not been tested. Optimal dilutions should be determined by end users.</p>
Comment:	Antibody can be supported by chemiluminescence kit ABIN921124 in WB.
Restrictions:	For Research Use only

## Handling

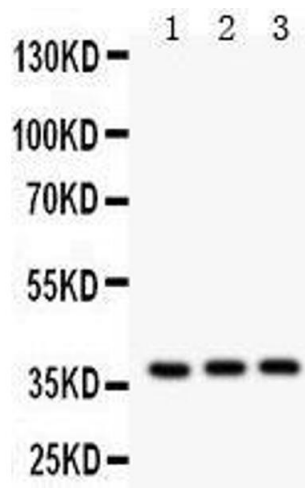
Format:	Lyophilized
Reconstitution:	Add 0.2 mL of distilled water will yield a concentration of 500 µg/mL.
Concentration:	500 µg/mL
Buffer:	Each vial contains 5 mg BSA, 0.9 mg NaCl, 0.2 mg Na2HPO4, 0.05 mg Sodium azide.
Preservative:	Sodium azide
Precaution of Use:	This product contains Sodium azide: a POISONOUS AND HAZARDOUS SUBSTANCE which should be handled by trained staff only.
Handling Advice:	Avoid repeated freezing and thawing.
Storage:	4 °C/-20 °C
Storage Comment:	At -20°C for one year. After reconstitution, at 4°C for one month. It can also be aliquotted and stored frozen at -20 °C for a longer time. Avoid repeated freezing and thawing.

## Images



### Western Blotting

**Image 1.** Anti- IL3 antibody, Western blotting All lanes: Anti IL3 at 0.5ug/ml WB: Recombinant Rat IL3 Protein 0.5ng  
Predicted bind size: 15KD Observed bind size: 15KD



Western Blotting

**Image 2.** Anti- IL3 antibody, Western blotting All lanes: Anti IL3 at 0.5ug/ml Lane 1: PC-12 Whole Cell Lysate at 40ug Lane 2: NRK Whole Cell Lysate at 40ug Lane 3: RH35 Whole Cell Lysate at 40ug Predicted bind size: 17KD Observed bind size: 37KD