



[Go to Product page](#)

Datasheet for ABIN3043253  
**anti-ITCH antibody (Middle Region)**

2 Images

Overview

Quantity:	100 µg
Target:	ITCH
Binding Specificity:	AA 410-437, Middle Region
Reactivity:	Human
Host:	Rabbit
Clonality:	Polyclonal
Conjugate:	This ITCH antibody is un-conjugated
Application:	Western Blotting (WB)

Product Details

Purpose:	Rabbit IgG polyclonal antibody for E3 ubiquitin-protein ligase Itchy homolog(ITCH) detection. Tested with WB in Human.
Immunogen:	A synthetic peptide corresponding to a sequence in the middle region of human ITCH/AIP4 (410-437aa AMQQFNQRFIYGNQDLFATSQSKEFDPL), different from the related mouse sequence by one amino acid.
Sequence:	AMQQFNQRFI YGNQDLFATS QSKEFDPL
Isotype:	IgG
Cross-Reactivity (Details):	No cross reactivity with other proteins.
Characteristics:	Rabbit IgG polyclonal antibody for E3 ubiquitin-protein ligase Itchy homolog(ITCH) detection. Tested with WB in Human. Gene Name: itchy E3 ubiquitin protein ligase

## Product Details

---

Protein Name: E3 ubiquitin-protein ligase Itchy homolog

Purification: Immunogen affinity purified.

## Target Details

---

Target: ITCH

Alternative Name: ITCH ([ITCH Products](#))

Background: ITCH is an ubiquitin-conjugating enzyme. This gene encodes a member of the Nedd4 family of HECT domain E3 ubiquitin ligases. HECT domain E3 ubiquitin ligases transfer ubiquitin from E2 ubiquitin-conjugating enzymes to protein substrates, thus targeting specific proteins for lysosomal degradation. The encoded protein plays a role in multiple cellular processes including erythroid and lymphoid cell differentiation and the regulation of immune responses. Mutations in this gene are a cause of syndromic multisystem autoimmune disease. Alternatively spliced transcript variants encoding multiple isoforms have been observed for this gene.

Synonyms: AIF4 antibody|AIP4 antibody|Atrophin 1 interacting protein 4 antibody|Atrophin-1-interacting protein 4 antibody|dJ46801.1 antibody|dJ46801.1 (atrophin 1 interacting protein 4 (AIP4)) antibody|dJ46801.1 atrophin 1 interacting protein 4 AIP4 antibody|E3 ubiquitin protein ligase Itchy homolog antibody|E3 ubiquitin-protein ligase Itchy homolog antibody|EC 6.3.2 antibody|Itch antibody|ITCH\_HUMAN antibody|Itchy E3 ubiquitin protein ligase antibody|Itchy E3 ubiquitin protein ligase homolog antibody|Itchy E3 ubiquitin protein ligase homolog mouse antibody|Itchy E3 ubiquitin protein ligase, mouse, homolog of antibody|itchy homolog E3 ubiquitin protein ligase antibody|Itchy mouse homolog E3 ubiquitin protein ligase antibody|NAPP1 antibody|NFE2 associated polypeptide 1 antibody| NFE2-associated polypeptide 1 antibody|Ubiquitin protein ligase ITCH antibody

Gene ID: 83737

UniProt: [Q96J02](#)

Pathways: [Activation of Innate immune Response](#), [CXCR4-mediated Signaling Events](#)

## Application Details

---

Application Notes: WB: Concentration: 0.1-0.5 µg/mL, Tested Species: Human

Notes: Tested Species: Species with positive results.

Other applications have not been tested. Optimal dilutions should be determined by end users.

## Application Details

Comment: Antibody can be supported by chemiluminescence kit ABIN921124 in WB.

Restrictions: For Research Use only

## Handling

Format: Lyophilized

Reconstitution: Add 0.2 mL of distilled water will yield a concentration of 500 µg/mL.

Concentration: 500 µg/mL

Buffer: Each vial contains 5 mg BSA, 0.9 mg NaCl, 0.2 mg Na<sub>2</sub>HPO<sub>4</sub>, 0.05 mg Sodium azide.

Preservative: Sodium azide

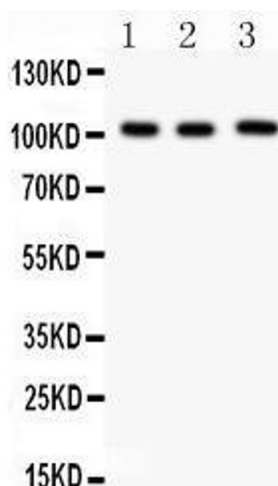
Precaution of Use: This product contains Sodium azide: a POISONOUS AND HAZARDOUS SUBSTANCE which should be handled by trained staff only.

Handling Advice: Avoid repeated freezing and thawing.

Storage: 4 °C/-20 °C

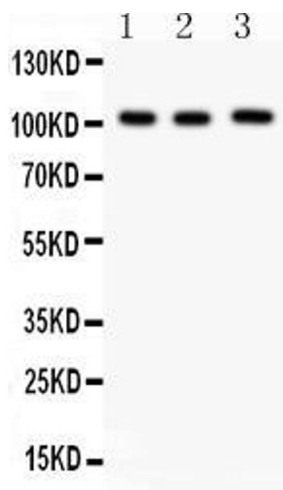
Storage Comment: At -20°C for one year. After reconstitution, at 4°C for one month.  
It can also be aliquotted and stored frozen at -20 °C for a longer time. Avoid repeated freezing and thawing.

## Images



### Western Blotting

**Image 1.** Anti- ITCH Picoband antibody, Western blotting All lanes: Anti ITCH at 0.5ug/ml Lane 1: HELA Whole Cell Lysate at 40ug Lane 2: RAJI Whole Cell Lysate at 40ug Lane 3: U937 Whole Cell Lysate at 40ug Predicted bind size: 103KD Observed bind size: 103KD



### Western Blotting

**Image 2.** Anti- ITCH Picoband antibody, Western blotting All lanes: Anti ITCH at 0.5ug/ml Lane 1: HELA Whole Cell Lysate at 40ug Lane 2: RAJI Whole Cell Lysate at 40ug Lane 3: U937 Whole Cell Lysate at 40ug Predicted bind size: 103KD Observed bind size: 103KD