

Datasheet for ABIN3043260  
**anti-Integrin beta 2 antibody (AA 404-769)**



[Go to Product page](#)

4 Images

## Overview

Quantity:	100 µg
Target:	Integrin beta 2 (ITGB2)
Binding Specificity:	AA 404-769
Reactivity:	Human
Host:	Rabbit
Clonality:	Polyclonal
Conjugate:	This Integrin beta 2 antibody is un-conjugated
Application:	Western Blotting (WB), Immunohistochemistry (Paraffin-embedded Sections) (IHC (p)), Immunocytochemistry (ICC)

## Product Details

Purpose:	Rabbit IgG polyclonal antibody for Integrin beta-2(ITGB2) detection. Tested with WB, IHC-P, ICC in Human.
Immunogen:	E.coli-derived human CD18 recombinant protein (Position: Q404-S769). Human CD18 shares 76% amino acid (aa) sequence identity with mouse CD18.
Isotype:	IgG
Cross-Reactivity (Details):	No cross reactivity with other proteins.
Characteristics:	<p>Rabbit IgG polyclonal antibody for Integrin beta-2(ITGB2) detection. Tested with WB, IHC-P, ICC in Human.</p> <p>Gene Name: integrin, beta 2 (complement component 3 receptor 3 and 4 subunit)</p> <p>Protein Name: Integrin beta-2</p>

## Product Details

Purification: Immunogen affinity purified.

## Target Details

Target: Integrin beta 2 (ITGB2)

Alternative Name: ITGB2 ([ITGB2 Products](#))

Background: ITGB2(INTEGRIN, BETA-2), also known as CD18, is a protein that in humans is encoded by the ITGB2 gene. ITGB2 is an integrin protein that belongs to the class of cell membrane glycoproteins. The beta-2 integrin chain gene is designated ITGB2 and the leukocyte antigen has been designated CD18. The ITGB2 gene is mapped to 21q22.3. The expression of CD18 is increased in lymphoblastoid cells from persons with Down syndrome, consistent with the location of the gene on chromosome 21. In humans lack of ITGB2 causes Leukocyte Adhesion Deficiency, a disease defined by a lack of leukocyte extravasation from blood into tissues. Although ITGB2 is expressed on the cell surface at normal levels and is capable of function following extracellular stimulation, it could not be activated via the 'inside-out' signaling pathways.

Synonyms: 95 subunit beta antibody|Beta 2 (antigen CD18 (p95) antibody|CD 18 antibody|CD18 antibody|CD18 antigen antibody|Cell surface adhesion glycoprotein LFA 1/CR3/P150,959 beta subunit precursor) antibody|Cell surface adhesion glycoproteins LFA 1/CR3/p150 95 subunit beta antibody|Cell surface adhesion glycoproteins LFA 1/CR3/p150,95 subunit beta antibody|Cell surface adhesion glycoproteins LFA 1/CR3/p15095 beta subunit antibody|Cell surface adhesion glycoproteins LFA-1/CR3/p150 antibody|Complement component 3 receptor 3 and 4 subunit antibody|Complement receptor C3 beta subunit antibody|Complement receptor C3 subunit beta antibody|Integrin beta 2 antibody|Integrin beta chain beta 2 antibody|Integrin beta-2 antibody|Integrin, beta 2 (complement component 3 receptor 3 and 4 subunit) antibody|ITB2\_HUMAN antibody|ITGB 2 antibody|ITGB2 antibody|LAD antibody|LCAMB antibody|Leukocyte associated antigens CD18/11A, CD18/11B, CD18/11C antibody|Leukocyte Cell Adhesion Molecule CD18 antibody|LFA 1 antibody|LFA1 antibody|Lymphocyte function associated antigen 1 antibody|MAC 1 antibody|MAC1 antibody|Macrophage antigen 1 (mac1) beta subunit antibody|MF17 antibody|MFI7 antibody|OTTHUMP00000115278 antibody|OTTHUMP00000115279 antibody|OTTHUMP00000115280 antibody|OTTHUMP00000115281 antibody|OTTHUMP00000115282 antibody

Gene ID: 3689

UniProt: [P05107](#)

## Target Details

Pathways: [NF-kappaB Signaling](#), [Activation of Innate immune Response](#), [Toll-Like Receptors Cascades](#), [Activated T Cell Proliferation](#)

## Application Details

Application Notes: WB: Concentration: 0.1-0.5 µg/mL, Tested Species: Human, The detection limit for CD18 is approximately 0.25 ng/lane under reducing conditions.  
IHC-P: Concentration: 0.5-1 µg/mL, Tested Species: Human, Epitope Retrieval by Heat: Boiling the paraffin sections in 10 mM citrate buffer, pH 6.0, for 20 mins is required for the staining of formalin/paraffin sections.  
ICC: Concentration: 0.5-1 µg/mL, Tested Species: Human  
Notes: Tested Species: Species with positive results. Other applications have not been tested. Optimal dilutions should be determined by end users.

Comment: Antibody can be supported by chemiluminescence kit ABIN921124 in WB, supported by ABIN921231 in IHC(P) and ICC.

Restrictions: For Research Use only

## Handling

Format: Lyophilized

Reconstitution: Add 0.2 mL of distilled water will yield a concentration of 500 µg/mL.

Concentration: 500 µg/mL

Buffer: Each vial contains 5 mg BSA, 0.9 mg NaCl, 0.2 mg Na<sub>2</sub>HPO<sub>4</sub>, 0.05 mg Sodium azide.

Preservative: Sodium azide

Precaution of Use: This product contains Sodium azide: a POISONOUS AND HAZARDOUS SUBSTANCE which should be handled by trained staff only.

Handling Advice: Avoid repeated freezing and thawing.

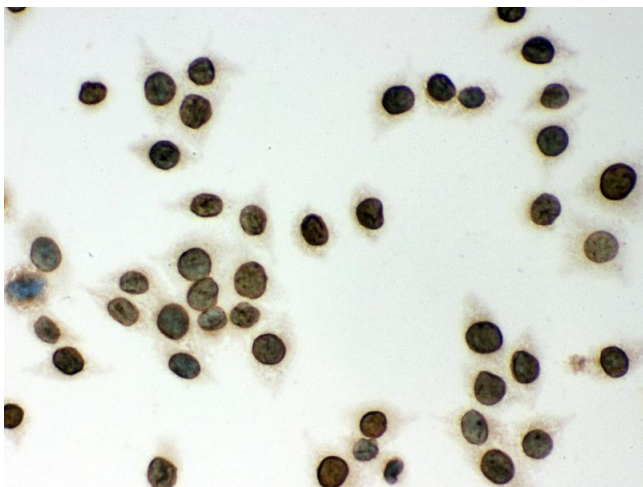
Storage: 4 °C/-20 °C

Storage Comment: At -20°C for one year. After reconstitution, at 4°C for one month.  
It can also be aliquotted and stored frozen at -20 °C for a longer time. Avoid repeated freezing and thawing.



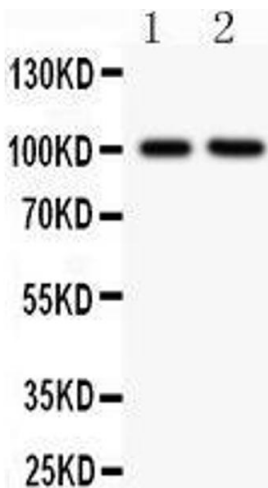
#### Western Blotting

**Image 1.** Anti-CD18 Picoband antibody, Western blotting All lanes: Anti CD18 at 0.5ug/ml WB: Recombinant Human CD18 Protein 0.5ng Predicted bind size: 40KD Observed bind size: 40KD



#### Immunohistochemistry

**Image 2.** Anti-CD18 Picoband antibody, ICC ICC: SM Cell



#### Western Blotting

**Image 3.** Anti-CD18 Picoband antibody, IHC(P) All lanes: Anti CD18 at 0.5ug/ml Lane 1: JURKAT Whole Cell Lysate at 40ug Lane 2: CEM Whole Cell Lysate at 40ug Predicted bind size: 85KD Observed bind size: 100KD

Please check the [product details page](#) for more images. Overall 4 images are available for ABIN3043260.