

Datasheet for ABIN3043267  
**anti-KCNA5 antibody (C-Term)**



[Go to Product page](#)

1 Image

## Overview

|                      |                                      |
|----------------------|--------------------------------------|
| Quantity:            | 100 µg                               |
| Target:              | KCNA5                                |
| Binding Specificity: | AA 583-613, C-Term                   |
| Reactivity:          | Human                                |
| Host:                | Rabbit                               |
| Clonality:           | Polyclonal                           |
| Conjugate:           | This KCNA5 antibody is un-conjugated |
| Application:         | Western Blotting (WB)                |

## Product Details

|                             |  |
|-----------------------------|--|
| Purpose:                    | Rabbit IgG polyclonal antibody for Potassium voltage-gated channel subfamily A member 5(KCNA5) detection. Tested with WB in Human.   |
| Immunogen:                  | A synthetic peptide corresponding to a sequence at the C-terminus of human KCNA5 (583-613aa LEKCNVKA KSNVDLRRSLYALCLDTSRETDL), different from the related mouse and rat sequences by two amino acids.                      |
| Sequence:                   | LEKCNVKA KSNVDLRRSLYALCLDTSRETD L  |
| Isotype:                    | IgG  |
| Cross-Reactivity (Details): | No cross reactivity with other proteins.   |
| Characteristics:            | Rabbit IgG polyclonal antibody for Potassium voltage-gated channel subfamily A member 5(KCNA5) detection. Tested with WB in Human.<br><br>Gene Name: potassium channel, voltage gated shaker related subfamily A, member 5 |

## Product Details

Protein Name: Potassium voltage-gated channel subfamily A member 5

Purification: Immunogen affinity purified.

## Target Details

Target: KCNA5

Alternative Name: KCNA5 ([KCNA5 Products](#))

Background: Potassium voltage-gated channel, shaker-related subfamily, member 5, also known as KCNA5 or Kv1.5, is a protein that in humans is encoded by the KCNA5 gene. Potassium channels represent the most complex class of voltage-gated ion channels from both functional and structural standpoints. KCNA5 encodes a member of the potassium channel, voltage-gated, shaker-related subfamily. This member contains six membrane-spanning domains with a shaker-type repeat in the fourth segment. It belongs to the delayed rectifier class, the function of which could restore the resting membrane potential of beta cells after depolarization, thereby contributing to the regulation of insulin secretion. This gene is intronless, and the gene is clustered with genes KCNA1 and KCNA6 on chromosome 12. Mutations in this gene have been related to both atrial fibrillation and sudden cardiac death. KCNA5 are also key players in pulmonary vascular function, where they play a role in setting the resting membrane potential and its involvement during hypoxic pulmonary vasoconstriction.

Synonyms: AFB7 antibody|cardiac potassium channel antibody|HCK1 antibody|HK2 antibody|HPCN1 antibody|insulinoma and islet potassium channel antibody|KCNA5 antibody|KCNA5\_HUMAN antibody|Kv1 antibody|Kv1.5 antibody|MGC117058 antibody|MGC117059 antibody|MGC25248 antibody|PCN1 antibody|Potassium channel 1 antibody|Potassium channel insulinoma and islet cell antibody|Potassium channel, insulinoma and islet cell antibody|Potassium channel, voltage-gated, shaker-related subfamily, member 5 antibody|Potassium voltage gated channel shaker related subfamily member 5 antibody|Potassium voltage gated channel subfamily A member 5 antibody|Potassium voltage-gated channel subfamily A member 5 antibody|Voltage-gated potassium channel HK2 antibody|voltage-gated potassium channel protein Kv1.5 antibody| Voltage-gated potassium channel subunit Kv1.5 antibody

Gene ID: 3741

UniProt: [P22460](#)

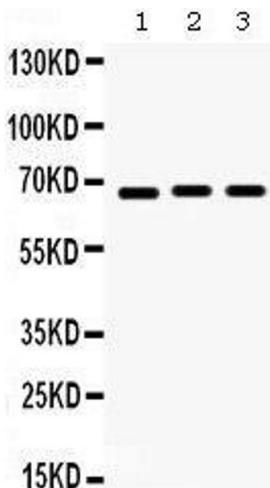
Application Details

|                    |   |
|--------------------|---|
| Application Notes: | WB: Concentration: 0.1-0.5 µg/mL, Tested Species: Human<br>Notes: Tested Species: Species with positive results.<br>Other applications have not been tested. Optimal dilutions should be determined by end users. |
| Comment:           | Antibody can be supported by chemiluminescence kit ABIN921124 in WB.  |
| Restrictions:      | For Research Use only   |

Handling

|                    |   |
|--------------------|---|
| Format:            | Lyophilized   |
| Reconstitution:    | Add 0.2 mL of distilled water will yield a concentration of 500 µg/mL.  |
| Concentration:     | 500 µg/mL   |
| Buffer:            | Each vial contains 5 mg BSA, 0.9 mg NaCl, 0.2 mg Na2HPO4, 0.05 mg Sodium azide.   |
| Preservative:      | Sodium azide  |
| Precaution of Use: | This product contains Sodium azide: a POISONOUS AND HAZARDOUS SUBSTANCE which should be handled by trained staff only.  |
| Handling Advice:   | Avoid repeated freezing and thawing.  |
| Storage:           | 4 °C/-20 °C   |
| Storage Comment:   | At -20°C for one year. After reconstitution, at 4°C for one month.<br>It can also be aliquotted and stored frozen at -20 °C for a longer time. Avoid repeated freezing and thawing. |

Images



Western Blotting

Image 1.