



[Go to Product page](#)

Datasheet for ABIN3043278
anti-KIF2C antibody (AA 531-725)

5 Images

Overview

| | |
|----------------------|--|
| Quantity: | 100 µg |
| Target: | KIF2C |
| Binding Specificity: | AA 531-725 |
| Reactivity: | Human, Mouse, Rat |
| Host: | Rabbit |
| Clonality: | Polyclonal |
| Conjugate: | This KIF2C antibody is un-conjugated |
| Application: | Western Blotting (WB), Immunohistochemistry (Paraffin-embedded Sections) (IHC (p)) |

Product Details

| | |
|-----------------------------|--|
| Purpose: | Rabbit IgG polyclonal antibody for Kinesin-like protein KIF2C(KIF2C) detection. Tested with WB, IHC-P in Human,Mouse,Rat. |
| Immunogen: | E.coli-derived human MCAK recombinant protein (Position: G531-Q725). Human MCAK shares 87% amino acid (aa) sequence identity with both mouse and rat MCAK. |
| Isotype: | IgG |
| Cross-Reactivity (Details): | No cross reactivity with other proteins. |
| Characteristics: | Rabbit IgG polyclonal antibody for Kinesin-like protein KIF2C(KIF2C) detection. Tested with WB, IHC-P in Human,Mouse,Rat. Gene Name: kinesin family member 2C Protein Name: Kinesin-like protein KIF2C |
| Purification: | Immunogen affinity purified. |

Target Details

Target: KIF2C

Alternative Name: KIF2C ([KIF2C Products](#))

Background: Kinesin-like protein KIF2C is a protein that in humans is encoded by the KIF2C gene. It is mapped to 1p34.1. The protein encoded by this gene is a member of kinesin-like protein family. Most proteins of this family are microtubule-dependent molecular motors that transport organelles within cells and move chromosomes during cell division. This protein acts to regulate microtubule dynamics in cells and is important for anaphase chromosome segregation and may be required to coordinate the onset of sister centromere separation. KIF2C uses microtubule depolymerizing activity to correct improper microtubule attachments at kinetochores.

Synonyms: 4930402F02Rik antibody|ESTM5 antibody|KIF 2C antibody|kif2c antibody|KIF2C_HUMAN antibody|Kinesein Family Member 2C antibody|Kinesin family member 2C antibody|kinesin like 6 (mitotic centromere associated kinesin) antibody|Kinesin like 6 antibody|Kinesin like protein 6 antibody|Kinesin like protein KIF2C antibody|Kinesin-like protein 6 antibody|Kinesin-like protein KIF2C antibody|KNS L6 antibody|KNSL 6 antibody|KNSL6 antibody|MCAK antibody|MGC11883 antibody|Mitotic centromere associated kinesin antibody|Mitotic centromere-associated kinesin antibody|OTTHUMP00000010066 antibody|X83316 antibody

Gene ID: 11004

UniProt: [Q99661](#)

Pathways: [Microtubule Dynamics](#)

Application Details

Application Notes: WB: Concentration: 0.1-0.5 µg/mL, Tested Species: Human, Mouse, The detection limit for MCAK is approximately 0.25 ng/lane under reducing conditions.
IHC-P: Concentration: 0.5-1 µg/mL, Tested Species: Mouse, Rat, Predicted Species: Human, Epitope Retrieval by Heat: Boiling the paraffin sections in 10 mM citrate buffer, pH 6.0, for 20 mins is required for the staining of formalin/paraffin sections.
Notes: Tested Species: Species with positive results. Predicted Species: Species predicted to be fit for the product based on sequence similarities. Other applications have not been tested. Optimal dilutions should be determined by end users.

Comment: Antibody can be supported by chemiluminescence kit ABIN921124 in WB, supported by

Application Details

ABIN921231 in IHC(P).

Restrictions: For Research Use only

Handling

Format: Lyophilized

Reconstitution: Add 0.2 mL of distilled water will yield a concentration of 500 µg/mL.

Concentration: 500 µg/mL

Buffer: Each vial contains 5 mg BSA, 0.9 mg NaCl, 0.2 mg Na₂HPO₄, 0.05 mg Sodium azide.

Preservative: Sodium azide

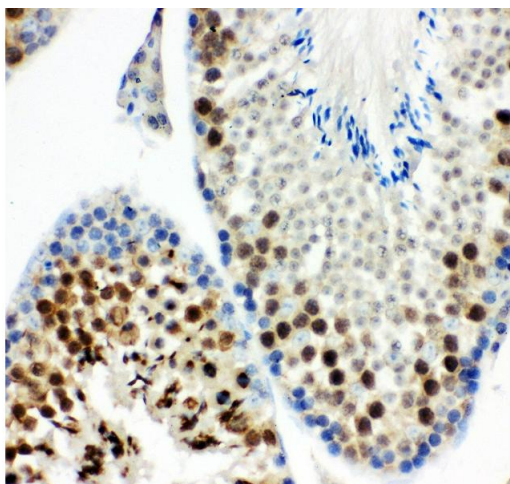
Precaution of Use: This product contains Sodium azide: a POISONOUS AND HAZARDOUS SUBSTANCE which should be handled by trained staff only.

Handling Advice: Avoid repeated freezing and thawing.

Storage: 4 °C/-20 °C

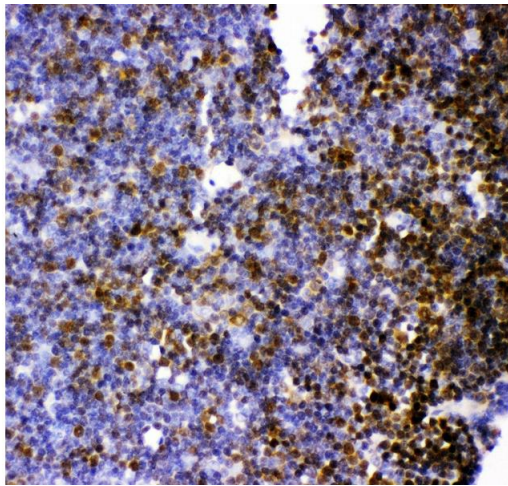
Storage Comment: At -20°C for one year. After reconstitution, at 4°C for one month.
It can also be aliquotted and stored frozen at -20 °C for a longer time. Avoid repeated freezing and thawing.

Images



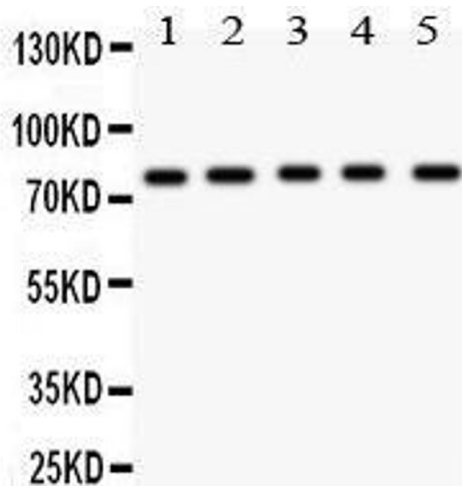
Immunohistochemistry

Image 1. Anti- MCAK antibody, IHC(P) IHC(P): Mouse Testis Tissue



Immunohistochemistry

Image 2. Anti- MCAK antibody, IHC(P) IHC(P): Rat Thymus Tissue



Western Blotting

Image 3. Anti- MCAK antibody, Western blotting All lanes: Anti MCAK at 0.5ug/ml Lane 1: Mouse Testis Tissue Lysate at 50ug Lane 2: HELA Whole Cell Lysate at 40ug Lane 3: MM231 Whole Cell Lysate at 40ug Lane 4: MM453 Whole Cell Lysate at 40ug Lane 5: SKOV Whole Cell Lysate at 40ug Predicted bind size: 81KD Observed bind size: 81KD

Please check the [product details page](#) for more images. Overall 5 images are available for ABIN3043278.