

Datasheet for ABIN3043295

## anti-Lamin A/C antibody (AA 481-646)

5 Images

3 Publications



[Go to Product page](#)

### Overview

Quantity:	100 µg
Target:	Lamin A/C (LMNA)
Binding Specificity:	AA 481-646
Reactivity:	Human, Mouse, Rat
Host:	Rabbit
Clonality:	Polyclonal
Conjugate:	This Lamin A/C antibody is un-conjugated
Application:	Western Blotting (WB), Immunohistochemistry (Paraffin-embedded Sections) (IHC (p)), Immunocytochemistry (ICC)

### Product Details

Purpose:	Rabbit IgG polyclonal antibody for Prelamin-A/C(LMNA) detection. Tested with WB, IHC-P, ICC in Human,Mouse,Rat.
Immunogen:	E.coli-derived human Lamin A/C recombinant protein (Position: Y481-Y646). Human Lamin A/C shares 90% and 92% amino acid (aa) sequence identity with mouse and rat Lamin A/C, respectively.
Isotype:	IgG
Cross-Reactivity (Details):	No cross reactivity with other proteins.
Characteristics:	Rabbit IgG polyclonal antibody for Prelamin-A/C(LMNA) detection. Tested with WB, IHC-P, ICC in Human,Mouse,Rat.  Gene Name: lamin A/C

## Product Details

Protein Name: Prelamin-A/C

Purification: Immunogen affinity purified.

## Target Details

Target: Lamin A/C (LMNA)

Alternative Name: LMNA ([LMNA Products](#))

Background: Lamins are structural protein components of the nuclear lamina, a protein network underlying the inner nuclear membrane that determines nuclear shape and size. There are three types of lamins, A,B and C. The lamin A/C (LMNA) gene contains 12 exons. Alternative splicing within exon 10 gives rise to two different mRNAs that code for pre-lamin A and lamin C. Lamin A/C is mapped to 1q21.2-q21.3 and mutations in this gene cause a variety of human diseases including Emery-Dreifuss muscular dystrophy, dilated cardiomyopathy, and Hutchinson-Gilford progeria syndrome. Lamin A/C deficiency is thus associated with both defective nuclear mechanics and impaired mechanically activated gene transcription.

Synonyms: 70 kDa lamin antibody|CDCC1 antibody|CDDC antibody|CMD1A antibody|CMT2B1 antibody|EMD2 antibody|FPL antibody|FPLD antibody|HGPS antibody|IDC antibody|LAMIN A antibody|lamin A/C antibody|LAMIN C antibody|Lamin-A/C antibody|LDP1 antibody|LFP antibody|LGMD1B antibody|LMN 1 antibody|LMN A antibody|LMN C antibody|LMN1 antibody|LMNA antibody|LMNA\_HUMAN antibody|LMNC antibody|NY REN 32 antigen antibody|PRO1 antibody|Renal carcinoma antigen NY-REN-32 antibody

Gene ID: 4000

UniProt: [P02545](#)

Pathways: [Apoptosis](#), [Caspase Cascade in Apoptosis](#), [ER-Nucleus Signaling](#), [Protein targeting to Nucleus](#)

## Application Details

Application Notes: WB: Concentration: 0.1-0.5 µg/mL, Tested Species: Human, The detection limit for Lamin A/C is approximately 0.1 ng/lane under reducing conditions.

IHC-P: Concentration: 0.5-1 µg/mL, Tested Species: Human, Mouse, Rat, Epitope Retrieval by Heat: Boiling the paraffin sections in 10 mM citrate buffer, pH 6.0, for 20 mins is required for the staining of formalin/paraffin sections.

ICC: Concentration: 0.5-1 µg/mL, Tested Species: Human

Notes: Tested Species: Species with positive results. Other applications have not been tested.

## Application Details

Optimal dilutions should be determined by end users.

Comment: Antibody can be supported by chemiluminescence kit ABIN921124 in WB, supported by ABIN921231 in IHC(P) and ICC.

Restrictions: For Research Use only

## Handling

Format: Lyophilized

Reconstitution: Add 0.2 mL of distilled water will yield a concentration of 500 µg/mL.

Concentration: 500 µg/mL

Buffer: Each vial contains 5 mg BSA, 0.9 mg NaCl, 0.2 mg Na<sub>2</sub>HPO<sub>4</sub>, 0.05 mg Sodium azide.

Preservative: Sodium azide

Precaution of Use: This product contains Sodium azide: a POISONOUS AND HAZARDOUS SUBSTANCE which should be handled by trained staff only.

Handling Advice: Avoid repeated freezing and thawing.

Storage: 4 °C/-20 °C

Storage Comment: At -20°C for one year. After reconstitution, at 4°C for one month.  
It can also be aliquotted and stored frozen at -20 °C for a longer time. Avoid repeated freezing and thawing.

## Publications

Product cited in: Jia, Ma, Lv, Ma, Xu, Yang, Tian, Wang, Sun, Xu, Fu, Zhao: "Oestrogen and parathyroid hormone alleviate lumbar intervertebral disc degeneration in ovariectomized rats and enhance Wnt/β-catenin pathway activity." in: **Scientific reports**, Vol. 6, pp. 27521, (2018) ([PubMed](#)).

Jia, Jiang, Liu, Wang, Zhu, Zhu, Liu, Zhong, Xie, Huang, Jia, Li, Liu, Zuo, Cheng, Dai, Ren: "Effects of three-dimensional collagen scaffolds on the expression profiles and biological functions of glioma cells." in: **International journal of oncology**, Vol. 52, Issue 6, pp. 1787-1800, (2018) ([PubMed](#)).

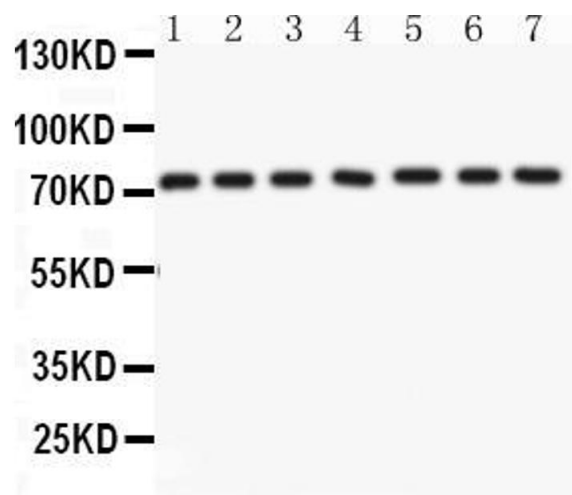
Ding, Teng, Fan, Zhao: "The Association Between Modic Changes of Lumbar Endplates and Spontaneous Absorption of Herniated Intervertebral Discs." in: **Cell biochemistry and**

**biophysics**, Vol. 71, Issue 3, pp. 1357-63, (2016) ([PubMed](#)).

Yan, Tian, Wang, Cheng, Xu, Song, Zhang, Zhang: "Age dependent changes in cartilage matrix, subchondral bone mass, and estradiol levels in blood serum, in naturally occurring osteoarthritis in Guinea pigs." in: **International journal of molecular sciences**, Vol. 15, Issue 8, pp. 13578-95, (2015) ([PubMed](#)).

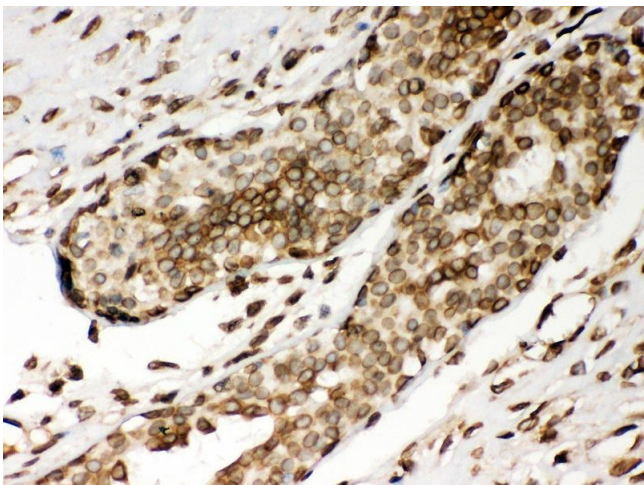
Xu, Zhang, Xu, Guo, Wang, Wu, Wang, Luo, Zhou: "Antiphotaging effect of conditioned medium of dedifferentiated adipocytes on skin in vivo and in vitro: a mechanistic study." in: **Stem cells and development**, Vol. 24, Issue 9, pp. 1096-111, (2015) ([PubMed](#)).

Images



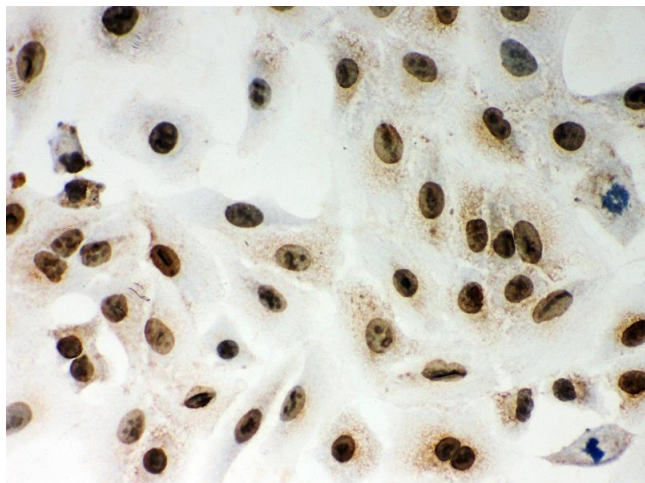
Western Blotting

**Image 1.** Anti- Lamin A Picoband antibody, Western blottingAll lanes: Anti Lamin A at 0.5ug/ml Lane 1: Human Placenta Tissue Lysate at 50ug Lane 2: SKOV Whole Cell Lysate at 40ug Lane 3: SW620 Whole Cell Lysate at 40ug Lane 4: COLO320 Whole Cell Lysate at 40ug Lane 5: HELA Whole Cell Lysate at 40ug Lane 6: 293T Whole Cell Lysate at 40ug Lane 7: A549 Whole Cell Lysate at 40ugPredicted bind size: 74KDObserved bind size: 74KD



Immunohistochemistry

**Image 2.** Anti- Lamin A Picoband antibody, IHC(P) IHC(P): Human Mammary Cancer Tissue



#### Immunohistochemistry

**Image 3.** Anti- Lamin A Picoband antibody, ICC ICC: A549  
Cell

Please check the [product details page](#) for more images. Overall 5 images are available for ABIN3043295.