



[Go to Product page](#)

Datasheet for ABIN3043296
anti-SRSF1 antibody (N-Term)

4 Images

Overview

Quantity:	100 µg
Target:	SRSF1
Binding Specificity:	AA 6-33, N-Term
Reactivity:	Human, Mouse, Rat
Host:	Rabbit
Clonality:	Polyclonal
Conjugate:	This SRSF1 antibody is un-conjugated
Application:	Western Blotting (WB), Immunohistochemistry (Paraffin-embedded Sections) (IHC (p))

Product Details

Purpose:	Rabbit IgG polyclonal antibody for Serine/arginine-rich splicing factor 1(SRSF1) detection. Tested with WB, IHC-P in Human,Mouse,Rat.
Immunogen:	A synthetic peptide corresponding to a sequence at the N-terminus of Human SF2(6-33aa VIRGPAGNNDCRIYVGNLPPDIRTKDIE), identical to the related mouse sequence.
Sequence:	VIRGPAGNND CRIYVGNLPP DIRTKDIE
Isotype:	IgG
Cross-Reactivity (Details):	No cross reactivity with other proteins.
Characteristics:	Rabbit IgG polyclonal antibody for Serine/arginine-rich splicing factor 1(SRSF1) detection. Tested with WB, IHC-P in Human,Mouse,Rat. Gene Name: serine/arginine-rich splicing factor 1 Protein Name: Serine/arginine-rich splicing factor 1

Product Details

Purification: Immunogen affinity purified.

Target Details

Target: SRSF1

Alternative Name: SRSF1 ([SRSF1 Products](#))

Background: SF2, also known as Serine/arginine-rich splicing factor 1 (SRSF1), is a protein that in humans is encoded by the SFRS1 gene. This gene encodes a member of the arginine/serine-rich splicing factor protein family. There is a pseudogene of this gene on chromosome 13. The encoded protein can either activate or repress splicing, depending on its phosphorylation state and its interaction partners. Multiple transcript variants have been found for this gene. ASF/SF2 is necessary for all splicing reactions to occur, and influences splice site selection in a concentration-dependent manner, resulting in alternative splicing.

Synonyms: Alternative splicing factor 1 antibody|Alternative-splicing factor 1 antibody|arginine/serine-rich 1 antibody|ASF 1 antibody|ASF antibody|ASF-1 antibody|ASF1 antibody|FLJ53078 antibody|MGC5228 antibody|P33 subunit antibody|Pre mRNA splicing factor SF2 P33 subunit antibody|pre-mRNA-splicing factor SF2 antibody|Serine/arginine-rich splicing factor 1 antibody|SF2 antibody|SF2P33 antibody|SFRS1 antibody|Splicing factor 2 alternate splicing factor antibody|Splicing factor 2 antibody|Splicing factor antibody|Splicing factor arginine/serine rich 1 antibody|SR Splicing factor 1 antibody|SRp30a antibody|srsf1 antibody|SRSF1_HUMAN antibody

Gene ID: 6426

UniProt: [Q07955](#)

Pathways: [Ribonucleoprotein Complex Subunit Organization](#)

Application Details

Application Notes: WB: Concentration: 0.1-0.5 µg/mL, Tested Species: Human, Mouse, Rat , The detection limit for SF2 is approximately 0.2 ng/lane under reducing conditions.
IHC-P: Concentration: 0.5-1 µg/mL, Tested Species: Human, Mouse, Rat, Epitope Retrieval by Heat: Boiling the paraffin sections in 10 mM citrate buffer, pH 6.0, for 20 mins is required for the staining of formalin/paraffin sections.
Notes: Tested Species: Species with positive results. Other applications have not been tested. Optimal dilutions should be determined by end users.

Application Details

Comment: Antibody can be supported by chemiluminescence kit ABIN921124 in WB, supported by ABIN921231 in IHC(P).

Restrictions: For Research Use only

Handling

Format: Lyophilized

Reconstitution: Add 0.2 mL of distilled water will yield a concentration of 500 µg/mL.

Concentration: 500 µg/mL

Buffer: Each vial contains 5 mg BSA, 0.9 mg NaCl, 0.2 mg Na₂HPO₄, 0.05 mg Sodium azide.

Preservative: Sodium azide

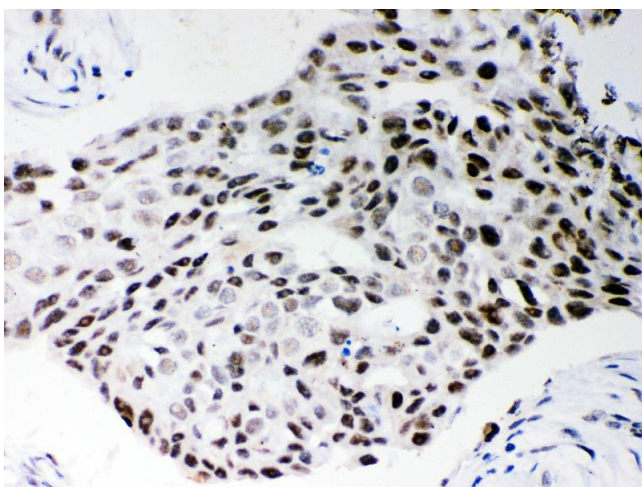
Precaution of Use: This product contains Sodium azide: a POISONOUS AND HAZARDOUS SUBSTANCE which should be handled by trained staff only.

Handling Advice: Avoid repeated freezing and thawing.

Storage: 4 °C/-20 °C

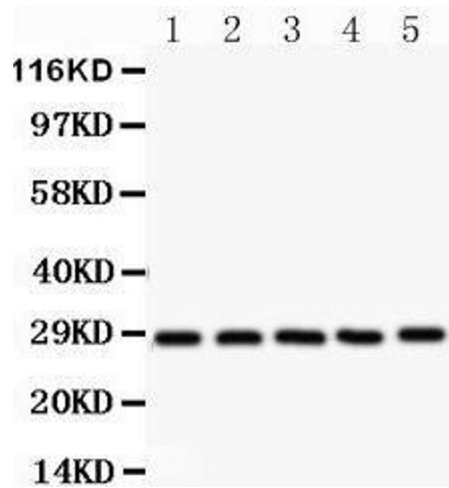
Storage Comment: At -20°C for one year. After reconstitution, at 4°C for one month.
It can also be aliquotted and stored frozen at -20 °C for a longer time. Avoid repeated freezing and thawing.

Images



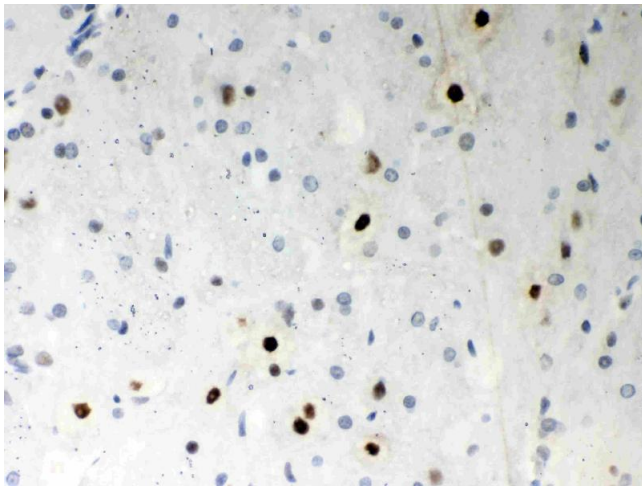
Immunohistochemistry

Image 1. Anti- SF2 Picoband antibody, IHC(P) IHC(P):
Human Mammary Cancer Tissue



Western Blotting

Image 2.



Immunohistochemistry

Image 3. Anti- SF2 Picoband antibody, IHC(P)IHC(P): Rat Brain Tissue

Please check the [product details page](#) for more images. Overall 4 images are available for ABIN3043296.