

Datasheet for ABIN3043320  
**anti-S100A6 antibody (AA 1-90)**

## 5 Images

[Go to Product page](#)

## Overview

Quantity:	100 µg
Target:	S100A6
Binding Specificity:	AA 1-90
Reactivity:	Human, Mouse, Rat
Host:	Rabbit
Clonality:	Polyclonal
Application:	Western Blotting (WB), Immunohistochemistry (Paraffin-embedded Sections) (IHC (p))

## Product Details

Purpose:	Rabbit IgG polyclonal antibody for Protein S100-A6(S100A6) detection. Tested with WB, IHC-P in Human,Mouse,Rat.
Immunogen:	E.coli-derived human S100 alpha 6 recombinant protein (Position: M1-G90). Human S100 alpha 6 shares 96.6% and 95.5% amino acid (aa) sequence identity with mouse and rat S100 alpha 6, respectively.
Isotype:	IgG
Cross-Reactivity (Details):	No cross reactivity with other proteins.
Characteristics:	<p>Rabbit IgG polyclonal antibody for Protein S100-A6(S100A6) detection. Tested with WB, IHC-P in Human,Mouse,Rat.</p> <p>Gene Name: S100 calcium binding protein A6</p> <p>Protein Name: Protein S100-A6</p>
Purification:	Immunogen affinity purified.

## Target Details

Target:	S100A6
Alternative Name:	S100A6 ( <a href="#">S100A6 Products</a> )
Background:	<p>S100 calcium-binding protein A6 (S100A6) is a protein that in humans is encoded by the S100A6 gene. The protein encoded by this gene is a member of the S100 family of proteins containing 2 EF-hand calcium-binding motifs. S100 proteins are localized in the cytoplasm and/or nucleus of a wide range of cells, and involved in the regulation of a number of cellular processes such as cell cycle progression and differentiation. And S100 genes include at least 13 members which are located as a cluster on chromosome 1q21. This protein may function in stimulation of Ca<sup>2+</sup>-dependent insulin release, stimulation of prolactin secretion, and exocytosis. Chromosomal rearrangements and altered expression of this gene have been implicated in melanoma.</p> <p>Synonyms: 2A9 antibody 5B10 antibody CABP antibody CACY antibody Calcyclin antibody Growth factor inducible protein 2A9 antibody Growth factor-inducible protein 2A9 antibody MLN 4 antibody MLN4 antibody OTTHUMP00000015472 antibody OTTHUMP00000015473 antibody PRA antibody  PRAGrowth factor inducible protein 2A9 antibody Prolactin receptor associated protein antibody Prolactin receptor-associated protein antibody Protein S100 A6 antibody Protein S100-A6 antibody S100 A6 antibody S100 calcium binding protein A6 (calcyclin) antibody S100 calcium binding protein A6 antibody S100 calcium-binding protein A6 antibody S100A6 antibody S10A6_HUMAN antibody</p>
Gene ID:	6277
UniProt:	<a href="#">P06703</a>
Pathways:	<a href="#">S100 Proteins</a>

## Application Details

Application Notes:	<p>WB: Concentration: 0.1-0.5 µg/mL, Tested Species: Human, Rat</p> <p>IHC-P: Concentration: 0.5-1 µg/mL, Tested Species: Human, Mouse, Rat, Epitope Retrieval by Heat: Boiling the paraffin sections in 10 mM citrate buffer, pH 6.0, for 20 mins is required for the staining of formalin/paraffin sections.</p> <p>Notes: Tested Species: Species with positive results. Other applications have not been tested. Optimal dilutions should be determined by end users.</p>
Comment:	Antibody can be supported by chemiluminescence kit ABIN921124 in WB, supported by ABIN921231 in IHC(P).

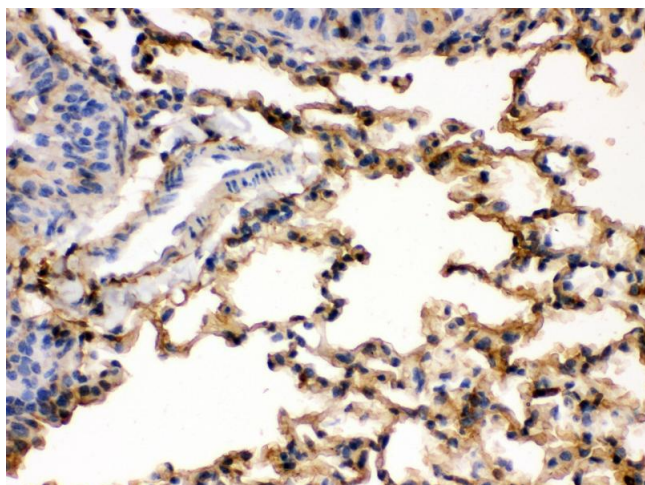
## Application Details

Restrictions: For Research Use only

## Handling

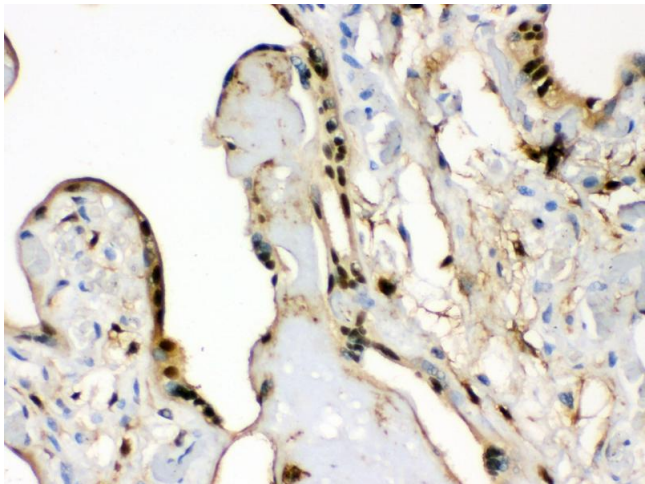
Format:	Lyophilized
Reconstitution:	Add 0.2 mL of distilled water will yield a concentration of 500 µg/mL.
Concentration:	500 µg/mL
Buffer:	Each vial contains 5 mg BSA, 0.9 mg NaCl, 0.2 mg Na <sub>2</sub> HPO <sub>4</sub> , 0.05 mg Sodium azide.
Preservative:	Sodium azide
Precaution of Use:	This product contains Sodium azide: a POISONOUS AND HAZARDOUS SUBSTANCE which should be handled by trained staff only.
Handling Advice:	Avoid repeated freezing and thawing.
Storage:	4 °C/-20 °C
Storage Comment:	At -20°C for one year. After reconstitution, at 4°C for one month.  It can also be aliquotted and stored frozen at -20 °C for a longer time. Avoid repeated freezing and thawing.

## Images



### Immunohistochemistry (Paraffin-embedded Sections)

Image 1.



#### Immunohistochemistry

**Image 2.** Anti- S100 alpha 6 Picoband antibody, IHC(P)  
IHC(P): Human Placenta Tissue



#### Western Blotting

**Image 3.**

Please check the [product details page](#) for more images. Overall 5 images are available for ABIN3043320.