



[Go to Product page](#)

Datasheet for ABIN3043325

## anti-SECTM1 antibody (C-Term)

### 1 Image

#### Overview

Quantity:	100 µg
Target:	SECTM1
Binding Specificity:	AA 118-152, C-Term
Reactivity:	Mouse
Host:	Rabbit
Clonality:	Polyclonal
Conjugate:	This SECTM1 antibody is un-conjugated
Application:	Western Blotting (WB)

#### Product Details

Purpose:	Rabbit IgG polyclonal antibody for Secreted and transmembrane protein 1b(Sectm1b) detection. Tested with WB in Mouse.
Immunogen:	A synthetic peptide corresponding to a sequence at the C-terminus of mouse SECTM1 (118-152aa KLHGFQAEFKNFNLTVNAADRQKTEDLPVTKVPDK).
Sequence:	KLHGFQAEFK NFNLTVNAAD RQKTEDLPVT KVPDK
Isotype:	IgG
Cross-Reactivity (Details):	No cross reactivity with other proteins.
Characteristics:	Rabbit IgG polyclonal antibody for Secreted and transmembrane protein 1b(Sectm1b) detection. Tested with WB in Mouse. Gene Name: secreted and transmembrane 1B Protein Name: Secreted and transmembrane protein 1b

## Product Details

---

Purification: Immunogen affinity purified.

## Target Details

---

Target: SECTM1

Alternative Name: SECTM1 ([SECTM1 Products](#))

Background: SECTM1B is also known as Sectm1 or K12. Secreted and transmembrane protein 1 is a protein that in humans is encoded by the SECTM1 gene. This gene encodes a transmembrane and secreted protein with characteristics of a type 1a transmembrane protein. It is found in a perinuclear Golgi-like pattern and thought to be involved in hematopoietic and/or immune system processes.

Synonyms: K12 antibody|K12 protein antibody|Protein K-12 antibody|Protein K12 antibody|SCTM1\_HUMAN antibody|Secreted and transmembrane 1 antibody|Secreted and transmembrane protein 1 antibody|SECTM 1 antibody|SECTM1 antibody|Type 1a transmembrane protein antibody

Gene ID: 58210

## Application Details

---

Application Notes: WB: Concentration: 0.1-0.5 µg/mL, Tested Species: Mouse  
Notes: Tested Species: Species with positive results.  
Other applications have not been tested. Optimal dilutions should be determined by end users.

Comment: Antibody can be supported by chemiluminescence kit ABIN921124 in WB.

Restrictions: For Research Use only

## Handling

---

Format: Lyophilized

Reconstitution: Add 0.2 mL of distilled water will yield a concentration of 500 µg/mL.

Concentration: 500 µg/mL

Buffer: Each vial contains 5 mg BSA, 0.9 mg NaCl, 0.2 mg Na<sub>2</sub>HPO<sub>4</sub>, 0.05 mg Sodium azide.

Preservative: Sodium azide

Precaution of Use: This product contains Sodium azide: a POISONOUS AND HAZARDOUS SUBSTANCE which

## Handling

---

should be handled by trained staff only.

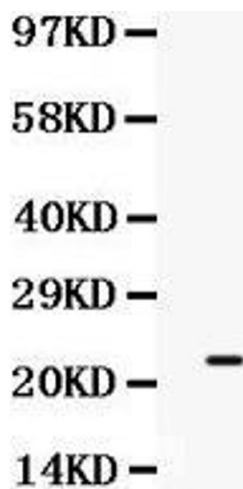
Handling Advice: Avoid repeated freezing and thawing.

Storage: 4 °C/-20 °C

Storage Comment: At -20°C for one year. After reconstitution, at 4°C for one month.  
It can also be aliquotted and stored frozen at -20 °C for a longer time. Avoid repeated freezing and thawing.

## Validation report #100035 for Immunohistochemistry (IHC)

---



### Western Blotting

**Image 1.** Observed bind size: 23KD