

Datasheet for ABIN3043327
anti-P-Selectin antibody (AA 42-271)



[Go to Product page](#)

3 Images

Overview

Quantity:	100 µg
Target:	P-Selectin (SELP)
Binding Specificity:	AA 42-271
Reactivity:	Human
Host:	Rabbit
Clonality:	Polyclonal
Conjugate:	This P-Selectin antibody is un-conjugated
Application:	Western Blotting (WB), ELISA, Immunohistochemistry (Paraffin-embedded Sections) (IHC (p))

Product Details

Purpose:	Rabbit IgG polyclonal antibody for P-selectin(SELP) detection. Tested with WB, IHC-P, ELISA in Human.
Immunogen:	E.coli-derived human CD62P recombinant protein (Position: W42-G271). Human CD62P shares 75% and 76% amino acid (aa) sequence identity with mouse and rat CD62P, respectively.
Isotype:	IgG
Cross-Reactivity (Details):	No cross reactivity with other proteins.
Characteristics:	Rabbit IgG polyclonal antibody for P-selectin(SELP) detection. Tested with WB, IHC-P, ELISA in Human. Gene Name: selectin P (granule membrane protein 140 kDa, antigen CD62) Protein Name: P-selectin
Purification:	Immunogen affinity purified.

Target Details

Target:	P-Selectin (SELP)
Alternative Name:	SELP (SELP Products)
Background:	<p>CD62P is also known as SELP or P-selectin. This gene encodes a 140 kDa protein that is stored in the alpha-granules of platelets and Weibel-Palade bodies of endothelial cells. This protein redistributes to the plasma membrane during platelet activation and degranulation and mediates the interaction of activated endothelial cells or platelets with leukocytes. The membrane protein is a calcium-dependent receptor that binds to sialylated forms of Lewis blood group carbohydrate antigens on neutrophils and monocytes. Alternative splice variants may occur but are not well documented.</p> <p>Synonyms: Antigen CD62 antibody CD62 antibody CD62 antigen-like family member P antibody CD62P antibody GMP 140 antibody GMP-140 antibody GMP140 antibody GMRP antibody Granule membrane protein 140 antibody Granulocyte membrane protein antibody GRMP antibody LECAM 3 antibody LECAM3 antibody Leukocyte endothelial cell adhesion molecule 3 antibody Leukocyte-endothelial cell adhesion molecule 3 antibody LYAM3_HUMAN antibody P Selectin antibody P-selectin antibody PADGEM antibody Platelet activation dependent granule-external membrane protein antibody Platelet alpha granule membrane protein antibody PSEL antibody Selectin P (granule membrane protein 140 kDa, antigen CD62) antibody SELP antibody</p>
Gene ID:	6403
UniProt:	P16109

Application Details

Application Notes:	<p>WB: Concentration: 0.1-0.5 µg/mL, Tested Species: Human</p> <p>IHC-P: Concentration: 0.5-1 µg/mL, Tested Species: Human, Epitope Retrieval by Heat: Boiling the paraffin sections in 10 mM citrate buffer, pH 6.0, for 20 mins is required for the staining of formalin/paraffin sections.</p> <p>ELISA: Concentration: 0.1-0.5 µg/mL, Tested Species: Human</p> <p>Notes: Tested Species: Species with positive results. Other applications have not been tested. Optimal dilutions should be determined by end users.</p>
Comment:	Antibody can be supported by chemiluminescence kit ABIN921124 in WB, supported by ABIN921231 in IHC(P).

Application Details

Restrictions: For Research Use only

Handling

Format: Lyophilized

Reconstitution: Add 0.2 mL of distilled water will yield a concentration of 500 µg/mL.

Concentration: 500 µg/mL

Buffer: Each vial contains 5 mg BSA, 0.9 mg NaCl, 0.2 mg Na₂HPO₄, 0.05 mg Sodium azide.

Preservative: Sodium azide

Precaution of Use: This product contains Sodium azide: a POISONOUS AND HAZARDOUS SUBSTANCE which should be handled by trained staff only.

Handling Advice: Avoid repeated freezing and thawing.

Storage: 4 °C/-20 °C

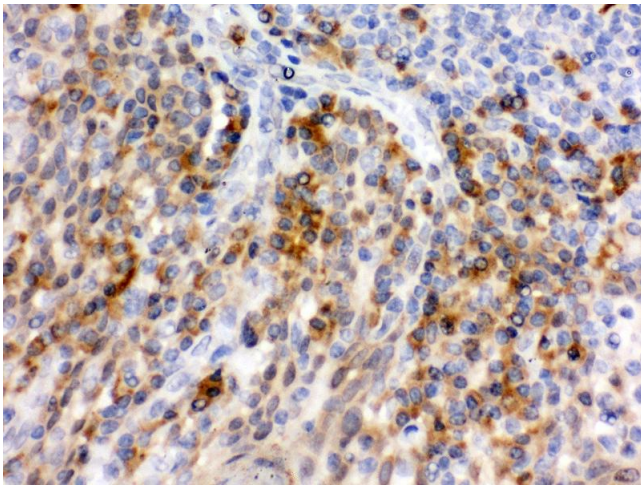
Storage Comment: At -20°C for one year. After reconstitution, at 4°C for one month.
It can also be aliquotted and stored frozen at -20 °C for a longer time. Avoid repeated freezing and thawing.

Images



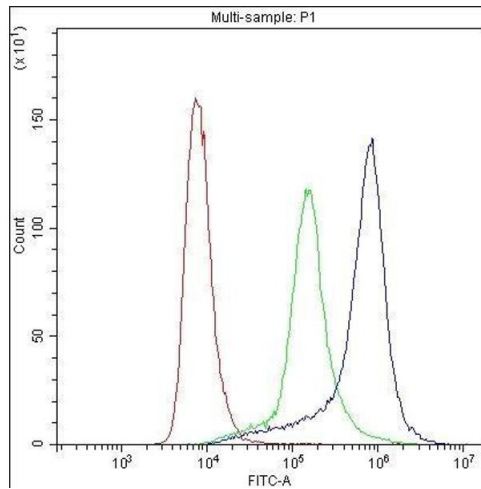
Western Blotting

Image 1. Anti- CD62P Picoband antibody, Western blotting
All lanes: Anti CD62P at 0.5ug/ml Lane 1: A549 Whole Cell Lysate at 40ug Lane 2: K562 Whole Cell Lysate at 40ug
Predicted bind size: 91KD Observed bind size: 140KD



Immunohistochemistry

Image 2. Anti- CD62P Picoband antibody, IHC(P) IHC(P):
Human Tonsil Tissue



Flow Cytometry

Image 3. Flow Cytometry analysis of THP-1 cells using anti-P-Selectin antibody . Overlay histogram showing THP-1 cells stained with (Blue line).The cells were blocked with 10% normal goat serum. And then incubated with rabbit anti- P-Selectin Antibody (1µg/1x10⁶ cells) for 30 min at 20°C. DyLight®488 conjugated goat anti-rabbit IgG (BA1127, 5-10µg/1x10⁶ cells) was used as secondary antibody for 30 minutes at 20°C. Isotype control antibody (Green line) was rabbit IgG (1µg/1x10⁶) used under the same conditions. Unlabelled sample (Red line) was also used as a control.