

Datasheet for ABIN3043328

## anti-SEMA3A antibody (AA 550-771)



[Go to Product page](#)

1 Image

1 Publication

### Overview

Quantity:	100 µg
Target:	SEMA3A
Binding Specificity:	AA 550-771
Reactivity:	Human
Host:	Rabbit
Clonality:	Polyclonal
Conjugate:	This SEMA3A antibody is un-conjugated
Application:	Western Blotting (WB)

### Product Details

Purpose:	Rabbit IgG polyclonal antibody for Semaphorin-3A(SEMA3A) detection. Tested with WB in Human.
Immunogen:	E.coli-derived human Semaphorin 3A recombinant protein (Position: K550-V771). Human Semaphorin 3A shares 93% and 94% amino acid (aa) sequence identity with mouse and rat Semaphorin 3A, respectively.
Isotype:	IgG
Cross-Reactivity (Details):	No cross reactivity with other proteins.
Characteristics:	<p>Rabbit IgG polyclonal antibody for Semaphorin-3A(SEMA3A) detection. Tested with WB in Human.</p> <p>Gene Name: sema domain, immunoglobulin domain (Ig), short basic domain, secreted, (semaphorin) 3A</p>

## Product Details

Protein Name: Semaphorin-3A

Purification: Immunogen affinity purified.

## Target Details

Target: SEMA3A

Alternative Name: SEMA3A ([SEMA3A Products](#))

Background: SEMA3A is also known as COLL1, SEMA1 or SEMAL. This gene is a member of the semaphorin family and encodes a protein with an Ig-like C2-type (immunoglobulin-like) domain, a PSI domain and a Sema domain. This secreted protein can function as either a chemorepulsive agent, inhibiting axonal outgrowth, or as a chemoattractive agent, stimulating the growth of apical dendrites. In both cases, the protein is vital for normal neuronal pattern development. Increased expression of this protein is associated with schizophrenia and is seen in a variety of human tumor cell lines. Also, aberrant release of this protein is associated with the progression of Alzheimer's disease.

Synonyms: Coll 1 antibody|Coll1 antibody|HH16 antibody|Hsema I antibody|Hsema III antibody|sema domain immunoglobulin domain (Ig) short basic domain secreted (semaphorin) 3A antibody|Sema III antibody|SEMA1 antibody|SEMA1-PEN antibody|SEMA3A antibody|SEMAD antibody|SEMAIII antibody|SEMAL antibody|Semaphorin 3A precursor antibody|Semaphorin III antibody|Semaphorin like growth cone guidance homolog of chick collapsin antibody|Semaphorin-3A precursor antibody|Semaphorin3A antibody|SemD antibody

Gene ID: 10371

UniProt: [Q14563](#)

Pathways: [Regulation of Cell Size](#)

## Application Details

Application Notes: WB: Concentration: 0.1-0.5 µg/mL, Tested Species: Human, The detection limit for Semaphorin 3A is approximately 0.1 ng/lane under reducing conditions.

Notes: Tested Species: Species with positive results.

Other applications have not been tested. Optimal dilutions should be determined by end users.

Comment: Antibody can be supported by chemiluminescence kit ABIN921124 in WB.

Restrictions: For Research Use only

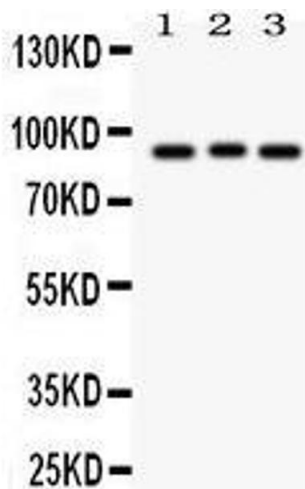
## Handling

Format:	Lyophilized
Reconstitution:	Add 0.2 mL of distilled water will yield a concentration of 500 µg/mL.
Concentration:	500 µg/mL
Buffer:	Each vial contains 5 mg BSA, 0.9 mg NaCl, 0.2 mg Na2HPO4, 0.05 mg Sodium azide.
Preservative:	Sodium azide
Precaution of Use:	This product contains Sodium azide: a POISONOUS AND HAZARDOUS SUBSTANCE which should be handled by trained staff only.
Handling Advice:	Avoid repeated freezing and thawing.
Storage:	4 °C/-20 °C
Storage Comment:	At -20°C for one year. After reconstitution, at 4°C for one month. It can also be aliquotted and stored frozen at -20 °C for a longer time. Avoid repeated freezing and thawing.

## Publications

Product cited in:	Zhou, Wu, Fu, Lv, Zhang: "Significance of semaphorin-3A and MMP-14 protein expression in non-small cell lung cancer." in: <b>Oncology letters</b> , Vol. 7, Issue 5, pp. 1395-1400, (2014) ( <a href="#">PubMed</a> ).
-------------------	--

## Images



Western Blotting

Image 1.