

Datasheet for ABIN3043335  
**anti-SFTPD antibody (C-Term)**

## 5 Images

[Go to Product page](#)

## Overview

Quantity:	100 µg
Target:	SFTPD
Binding Specificity:	AA 292-321, C-Term
Reactivity:	Human, Rat
Host:	Rabbit
Clonality:	Polyclonal
Conjugate:	This SFTPD antibody is un-conjugated
Application:	Western Blotting (WB), ELISA, Immunohistochemistry (Paraffin-embedded Sections) (IHC (p))

## Product Details

Purpose:	Rabbit IgG polyclonal antibody for Pulmonary surfactant-associated protein D(SFTPD) detection. Tested with WB, IHC-P, ELISA in Human, Rat.
Immunogen:	A synthetic peptide corresponding to a sequence at the C-terminus of human Surfactant protein D (292-321aa RSAAENAALQLVVAKNEAAFLSMTD SKTE), different from the related mouse and rat sequences by eight amino acids.
Sequence:	RSAAENAALQ QLVVAKNEAA FLSMTD
Isotype:	IgG
Cross-Reactivity (Details):	No cross reactivity with other proteins.
Characteristics:	Rabbit IgG polyclonal antibody for Pulmonary surfactant-associated protein D(SFTPD) detection. Tested with WB, IHC-P, ELISA in Human, Rat. Gene Name: surfactant protein D

## Product Details

Protein Name: Pulmonary surfactant-associated protein D

Purification: Immunogen affinity purified.

## Target Details

Target: SFTPD

Alternative Name: SFTPD ([SFTPD Products](#))

Background: Surfactant, pulmonary-associated protein D, also known as SFTPD or SP-D, is a protein which in humans is encoded by the SFTPD gene. It is mapped to 10q22.2-q23.1. The protein encoded by this gene is part of the innate immune response, protecting the lungs against inhaled microorganisms and chemicals. The encoded protein may also be involved in surfactant metabolism.

Synonyms: COLEC 7 antibody|COLEC7 antibody|Collectin-7 antibody|Collectin7 antibody|Lung surfactant protein D antibody|PSP D antibody|PSP-D antibody|PSP-D Surfactant protein D antibody|PSPD antibody|Pulmonary surfactant apoprotein antibody|Pulmonary surfactant associated protein D antibody|Pulmonary surfactant associated protein PSP-D antibody|Pulmonary surfactant-associated protein D antibody|SFTP 4 antibody|SFTP4 antibody|SFTPD antibody|SFTPD\_HUMAN antibody|SP D antibody|SP-D antibody|Surfactant associated protein pulmonary 4 antibody|Surfactant pulmonary associated protein D antibody

Gene ID: 6441

UniProt: [P35247](#)

## Application Details

Application Notes: WB: Concentration: 0.1-0.5 µg/mL, Tested Species: Human, Rat  
IHC-P: Concentration: 0.5-1 µg/mL, Tested Species: Human, Epitope Retrieval by Heat: Boiling the paraffin sections in 10 mM citrate buffer, pH 6.0, for 20 mins is required for the staining of formalin/paraffin sections.  
ELISA: Concentration: 0.1-0.5 µg/mL, Tested Species: Human

Notes: Tested Species: Species with positive results. Other applications have not been tested.  
Optimal dilutions should be determined by end users.

Comment: Antibody can be supported by chemiluminescence kit ABIN921124 in WB, supported by ABIN921231 in IHC(P).

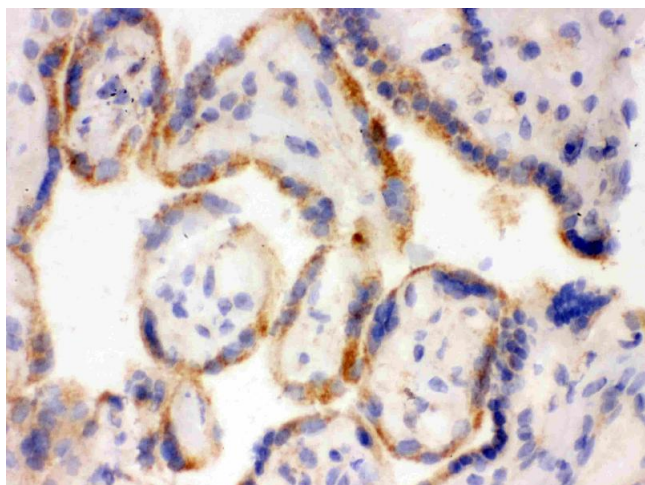
## Application Details

Restrictions: For Research Use only

## Handling

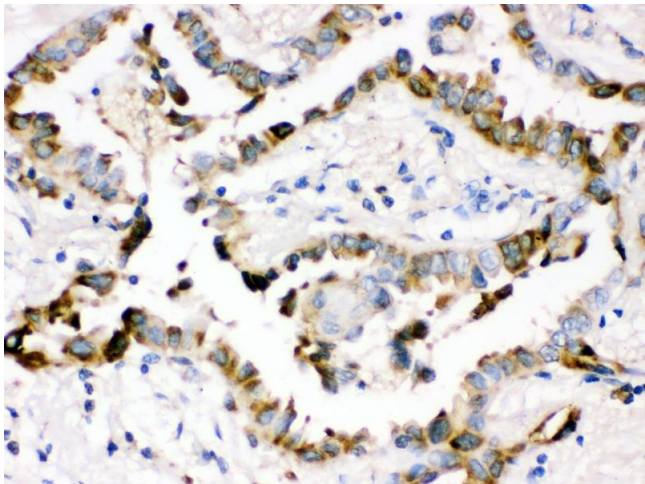
Format:	Lyophilized
Reconstitution:	Add 0.2 mL of distilled water will yield a concentration of 500 µg/mL.
Concentration:	500 µg/mL
Buffer:	Each vial contains 5 mg BSA, 0.9 mg NaCl, 0.2 mg Na <sub>2</sub> HPO <sub>4</sub> , 0.05 mg Sodium azide.
Preservative:	Sodium azide
Precaution of Use:	This product contains Sodium azide: a POISONOUS AND HAZARDOUS SUBSTANCE which should be handled by trained staff only.
Handling Advice:	Avoid repeated freezing and thawing.
Storage:	4 °C/-20 °C
Storage Comment:	At -20°C for one year. After reconstitution, at 4°C for one month. It can also be aliquotted and stored frozen at -20 °C for a longer time. Avoid repeated freezing and thawing.

## Images



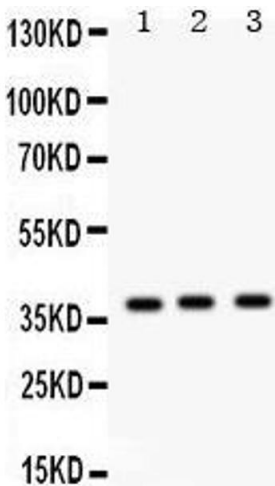
### Immunohistochemistry

**Image 1.** IHC analysis of Surfactant protein D using anti-Surfactant protein D antibody . Surfactant protein D was detected in frozen section of human placenta tissue . Heat mediated antigen retrieval was performed in citrate buffer (pH6, epitope retrieval solution) for 20 mins. The tissue section was blocked with 10% goat serum. The tissue section was then incubated with 1µg/ml rabbit anti-Surfactant protein D Antibody overnight at 4°C. Biotinylated goat anti-rabbit IgG was used as secondary antibody and incubated for 30 minutes at 37°C. The tissue section was developed using Streptavidin-Biotin-Complex (SABC)(Catalog # SA1022) with DAB as the chromogen. 5



**Immunohistochemistry (Paraffin-embedded Sections)**

Image 2.



**Western Blotting**

Image 3.

Please check the [product details page](#) for more images. Overall 5 images are available for ABIN3043335.