

Datasheet for ABIN3043343
anti-SMC3 antibody (C-Term)[Go to Product page](#)

4 Images

Overview

Quantity:	100 µg
Target:	SMC3
Binding Specificity:	AA 1178-1216, C-Term
Reactivity:	Human, Mouse, Rat
Host:	Rabbit
Clonality:	Polyclonal
Conjugate:	This SMC3 antibody is un-conjugated
Application:	Western Blotting (WB), Immunohistochemistry (Paraffin-embedded Sections) (IHC (p))

Product Details

Purpose:	Rabbit IgG polyclonal antibody for Structural maintenance of chromosomes protein 3(SMC3) detection. Tested with WB, IHC-P in Human,Mouse,Rat.
Immunogen:	A synthetic peptide corresponding to a sequence at the C-terminus of human SMC3 (1178-1216aa ELLESADKFYGVKFRNKVSHIDVITAEMAKDFVEDDTTH), identical to the related mouse sequence.
Sequence:	ELLESADKFY GVKFRNKVSH IDVITAEMAK DFVEDDTTH
Isotype:	IgG
Cross-Reactivity (Details):	No cross reactivity with other proteins.
Characteristics:	Rabbit IgG polyclonal antibody for Structural maintenance of chromosomes protein 3(SMC3) detection. Tested with WB, IHC-P in Human,Mouse,Rat. Gene Name: structural maintenance of chromosomes 3

Product Details

Protein Name: Structural maintenance of chromosomes protein 3

Purification: Immunogen affinity purified.

Target Details

Target: SMC3

Alternative Name: SMC3 ([SMC3 Products](#))

Background: Structural maintenance of chromosomes 3, also known as SMC3, is a human gene. This gene belongs to the SMC3 subfamily of SMC proteins. The encoded protein occurs in certain cell types as either an intracellular, nuclear protein or a secreted protein. The nuclear form, known as structural maintenance of chromosomes 3, is a component of the multimeric cohesin complex that holds together sister chromatids during mitosis, enabling proper chromosome segregation. Post-translational modification of the encoded protein by the addition of chondroitin sulfate chains gives rise to the secreted proteoglycan bamacan, an abundant basement membrane protein.

Synonyms: BAM antibody|Bamacan antibody|Basement membrane associated chondroitin proteoglycan antibody|Basement membrane-associated chondroitin proteoglycan antibody|BMH antibody|CDLS3 antibody|chondroitin sulfate proteoglycan 6 (bamacan) antibody|Chondroitin sulfate proteoglycan 6 antibody|Chromosome associated polypeptide antibody|Chromosome-associated polypeptide antibody|CSPG 6 antibody|CSPG6 antibody|hCAP antibody|SMC 3 antibody|SMC protein 3 antibody|SMC-3 antibody|smc3 antibody|SMC3_HUMAN antibody|SMC3L1 antibody| Structural maintenance of chromosome 3 antibody|Structural maintenance of chromosomes 3 antibody|Structural maintenance of chromosomes protein 3 antibody

Gene ID: 9126

Pathways: [Stem Cell Maintenance](#)

Application Details

Application Notes: WB: Concentration: 0.1-0.5 µg/mL, Tested Species: Human, Mouse, Rat
IHC-P: Concentration: 0.5-1 µg/mL, Tested Species: Human, Mouse, Rat, Epitope Retrieval by Heat: Boiling the paraffin sections in 10 mM citrate buffer, pH 6.0, for 20 mins is required for the staining of formalin/paraffin sections.
Notes: Tested Species: Species with positive results. Other applications have not been tested.

Application Details

Optimal dilutions should be determined by end users.

Comment: Antibody can be supported by chemiluminescence kit ABIN921124 in WB, supported by ABIN921231 in IHC(P).

Restrictions: For Research Use only

Handling

Format: Lyophilized

Reconstitution: Add 0.2 mL of distilled water will yield a concentration of 500 µg/mL.

Concentration: 500 µg/mL

Buffer: Each vial contains 5 mg BSA, 0.9 mg NaCl, 0.2 mg Na₂HPO₄, 0.05 mg Sodium azide.

Preservative: Sodium azide

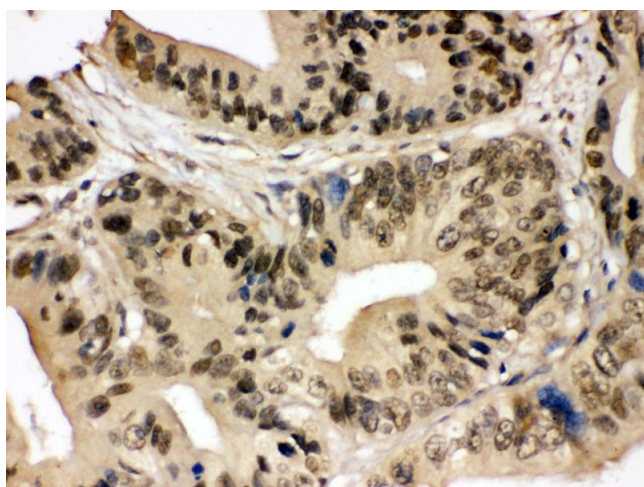
Precaution of Use: This product contains Sodium azide: a POISONOUS AND HAZARDOUS SUBSTANCE which should be handled by trained staff only.

Handling Advice: Avoid repeated freezing and thawing.

Storage: 4 °C/-20 °C

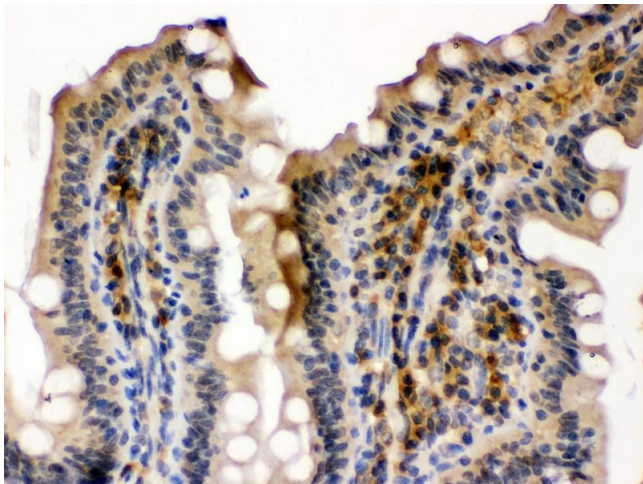
Storage Comment: At -20°C for one year. After reconstitution, at 4°C for one month.
It can also be aliquotted and stored frozen at -20 °C for a longer time. Avoid repeated freezing and thawing.

Images



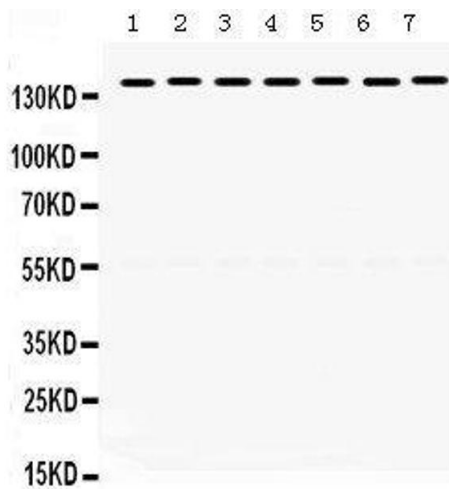
Immunohistochemistry

Image 1. Anti- SMC3 Picoband antibody, IHC(P) IHC(P):
Human Intestinal Cancer Tissue



Immunohistochemistry

Image 2. Anti- SMC3 Picoband antibody, IHC(P) IHC(P):
Mouse Intestine Tissue



Western Blotting

Image 3.

Please check the [product details page](#) for more images. Overall 4 images are available for ABIN3043343.