

Datasheet for ABIN3043354
anti-PLK1 antibody (AA 86-430)



[Go to Product page](#)

4 Images

Overview

Quantity:	100 µg
Target:	PLK1
Binding Specificity:	AA 86-430
Reactivity:	Human
Host:	Rabbit
Clonality:	Polyclonal
Conjugate:	This PLK1 antibody is un-conjugated
Application:	Western Blotting (WB)

Product Details

Purpose:	Anti-PLK1 Antibody Picoband®
Immunogen:	E.coli-derived human PLK1 recombinant protein (Position: K86-N430). Human PLK1 shares 95.4% and 96.2% amino acid (aa) sequence identity with mouse and rat PLK1, respectively.
Isotype:	IgG
Cross-Reactivity (Details):	No cross-reactivity with other proteins
Characteristics:	Anti-PLK1 Antibody Picoband® (ABIN3043354). Tested in WB applications. This antibody reacts with Human. The brand Picoband indicates this is a premium antibody that guarantees superior quality, high affinity, and strong signals with minimal background in Western blot applications. Only our best-performing antibodies are designated as Picoband, ensuring unmatched performance.
Purification:	Immunogen affinity purified.

Target Details

Target:	PLK1
Alternative Name:	PLK1 (PLK1 Products)
Background:	<p>Synonyms: Serine/threonine-protein kinase PLK1,2.7.11.21,Polo-like kinase 1,PLK-1,Serine/threonine-protein kinase 13,STPK13,PLK1,PLK,</p> <p>Tissue Specificity: Placenta and colon.</p> <p>Background: Serine/threonine-protein kinase PLK1, also known as polo-like kinase 1 (PLK-1) or serine/threonine-protein kinase 13 (STPK13), is an enzyme that in humans is encoded by the PLK1 (polo-like kinase 1) gene. Plk1 is an early trigger for G2/M transition. It supports the functional maturation of the centrosome in late G2/early prophaseand establishment of the bipolar spindle. Also, Plk1 phosphorylates and activates cdc25C, a phosphatase that dephosphorylates and activates the cyclinB/cdc2 complex. Studies have shown that the loss of PLK1 expression can inducepro-apoptotic pathways and inhibit growth. Based on yeast and murine studies of meiosis, human PLK1 may also have a regulatory function in meiosis.</p> <p>Sequence Similarities: Belongs to the protein kinase superfamily. Ser/Thr protein kinase family. CDC5/Polo subfamily.</p>
Molecular Weight:	68 kDa
Gene ID:	5347
UniProt:	P53350
Pathways:	Cell Division Cycle, M Phase

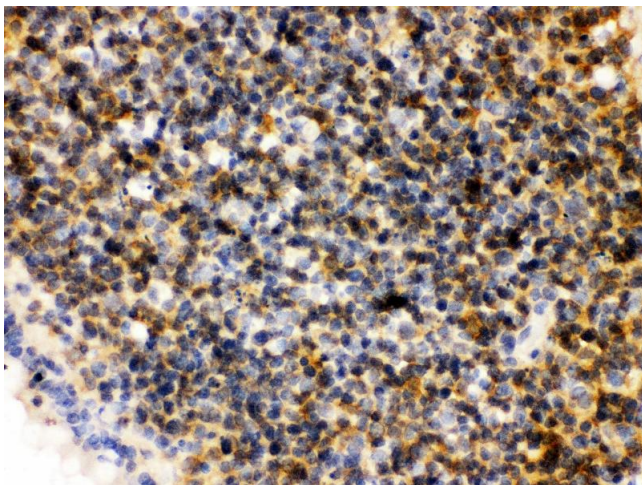
Application Details

Application Notes:	<p>Western blot, 0.1-0.5 µg/mL, Human</p> <p>1. Holtrich U, Wolf G, Bräuninger A, Karn T, Böhme B, Rübsamen-Waigmann H et al. (March 1994). "Induction and down-regulation of PLK, a human serine/threonine kinase expressed in proliferating cells and tumors". Proc. Natl. Acad. Sci. U.S.A. 91(5): 1736-40. 2. Soung NK, Park JE, Yu LR, Lee KH, Lee JM, Bang JK et al. (April 2009). "Plk1-dependent and -independent roles of an ODF2 splice variant, hCenexin1, at the centrosome of somatic cells". Dev. Cell 16(4): 539-50.</p>
Comment:	Antibody can be supported by chemiluminescence kit ABIN921124 in WB, supported by ABIN921231 in IHC(P).
Restrictions:	For Research Use only

Handling

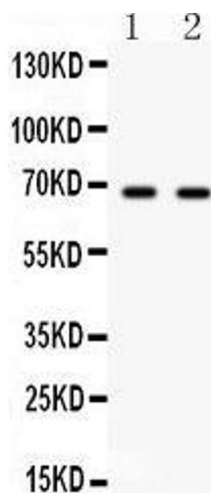
Format:	Lyophilized
Reconstitution:	Add 0.2 mL of distilled water will yield a concentration of 500 µg/mL.
Concentration:	500 µg/mL
Buffer:	Each vial contains 5 mg BSA, 0.9 mg NaCl, 0.2 mg Na ₂ HPO ₄ , 0.05 mg Sodium azide.
Preservative:	Sodium azide
Precaution of Use:	This product contains Sodium azide: a POISONOUS AND HAZARDOUS SUBSTANCE which should be handled by trained staff only.
Handling Advice:	Avoid repeated freezing and thawing.
Storage:	4 °C,-20 °C
Storage Comment:	Store at -20°C for one year from date of receipt. After reconstitution, at 4°C for one month. It can also be aliquotted and stored frozen at -20°C for six months. Avoid repeated freeze-thaw cycles.

Images



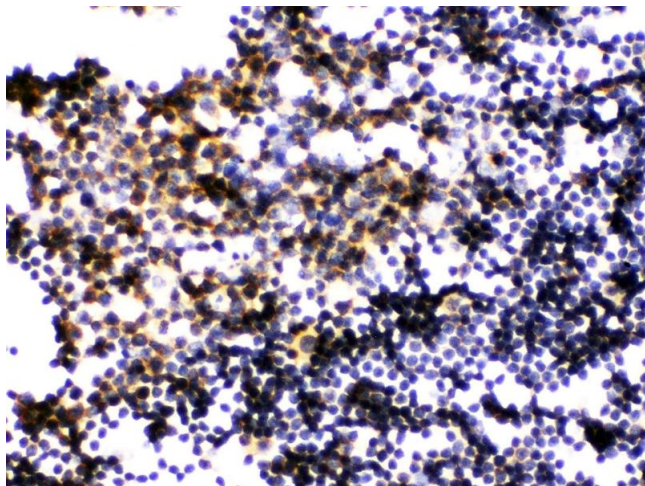
Immunohistochemistry

Image 1. Anti- PLK1 Picoband antibody,IHC(P) IHC(P): Rat Lymphaden Tissue



Western Blotting

Image 2.



Immunohistochemistry

Image 3. Anti- PLK1 Picoband antibody,IHC(P) IHC(P):
Mouse Lymphaden Tissue

Please check the [product details page](#) for more images. Overall 4 images are available for ABIN3043354.