

Datasheet for ABIN3043356
anti-PPP2CA antibody (AA 1-309)

4 Images

[Go to Product page](#)

Overview

Quantity:	100 µg
Target:	PPP2CA
Binding Specificity:	AA 1-309
Reactivity:	Human, Mouse, Rat
Host:	Rabbit
Clonality:	Polyclonal
Conjugate:	This PPP2CA antibody is un-conjugated
Application:	Western Blotting (WB), Immunohistochemistry (Paraffin-embedded Sections) (IHC (p))

Product Details

Purpose:	Rabbit IgG polyclonal antibody for Serine/threonine-protein phosphatase 2A catalytic subunit alpha isoform(PPP2CA) detection. Tested with WB, IHC-P in Human,Mouse,Rat.
Immunogen:	E.coli-derived human PP2A-alpha recombinant protein (Position: M1-L309). Human PP2A-alpha shares 100% amino acid (aa) sequence identity with both mouse and rat PP2A-alpha.
Isotype:	IgG
Cross-Reactivity (Details):	PP2A-alpha shares 100 % cross reactivity with PPP2CB.
Characteristics:	<p>Rabbit IgG polyclonal antibody for Serine/threonine-protein phosphatase 2A catalytic subunit alpha isoform(PPP2CA) detection. Tested with WB, IHC-P in Human,Mouse,Rat.</p> <p>Gene Name: protein phosphatase 2, catalytic subunit, alpha isozyme</p> <p>Protein Name: Serine/threonine-protein phosphatase 2A catalytic subunit alpha isoform</p>
Purification:	Immunogen affinity purified.

Target Details

Target:	PPP2CA
Alternative Name:	PPP2CA (PPP2CA Products)
Background:	<p>The catalytic subunit of human protein phosphatase 2A (PPP2CA) encodes a 309-amino acid polypeptide. It is localized to chromosome 5. The gene (approximately 30 kbp) is composed of seven exons and six introns. It is predicted to be important for phosphatase enzymatic activity. Methylation of the C-terminal leucine residue (Leu309) of protein serine/threonine phosphatase 2A catalytic subunit (PP2AC) is known to regulate catalytic activity in vitro. Furthermore, PP2A has a fundamental role in cardiac function, and suggests that disturbances in protein phosphatase expression and activity may cause or exacerbate the course of cardiac diseases.</p> <p>Synonyms: PP2A alpha antibody PP2A-alpha antibody PP2AA_HUMAN antibody PP2Aalpha antibody PP2Ac antibody PP2CA antibody PP2Calpha antibody PPP2CA antibody Protein phosphatase 2 (formerly 2A) catalytic subunit alpha isoform antibody Protein phosphatase 2 catalytic subunit alpha isoform antibody Protein phosphatase 2, catalytic subunit, alpha isozyme antibody Protein phosphatase 2A catalytic subunit, alpha isoform antibody Replication protein C antibody RP C antibody RP-C antibody RPC antibody Serine/threonine protein phosphatase 2A catalytic subunit alpha isoform antibody Serine/threonine-protein phosphatase 2A catalytic subunit alpha isoform antibody</p>
Gene ID:	5515
UniProt:	P67775
Pathways:	PI3K-Akt Signaling , Mitotic G1-G1/S Phases , Hepatitis C , Toll-Like Receptors Cascades

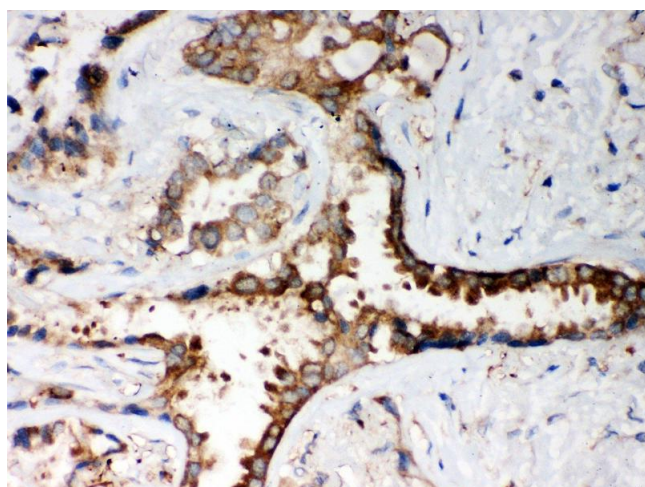
Application Details

Application Notes:	<p>WB: Concentration: 0.1-0.5 µg/mL, Tested Species: Human, Mouse, Rat, The detection limit for PP2A-alpha is approximately 0.1 ng/lane under reducing conditions.</p> <p>IHC-P: Concentration: 0.5-1 µg/mL, Tested Species: Human, Mouse, Rat, Epitope Retrieval by Heat: Boiling the paraffin sections in 10 mM citrate buffer, pH 6.0, for 20 mins is required for the staining of formalin/paraffin sections.</p> <p>Notes: Tested Species: Species with positive results. Other applications have not been tested. Optimal dilutions should be determined by end users.</p>
Comment:	Antibody can be supported by chemiluminescence kit ABIN921124 in WB, supported by ABIN921231 in IHC(P).
Restrictions:	For Research Use only

Handling

Format:	Lyophilized
Reconstitution:	Add 0.2 mL of distilled water will yield a concentration of 500 µg/mL.
Concentration:	500 µg/mL
Buffer:	Each vial contains 5 mg BSA, 0.9 mg NaCl, 0.2 mg Na ₂ HPO ₄ , 0.05 mg Sodium azide.
Preservative:	Sodium azide
Precaution of Use:	This product contains Sodium azide: a POISONOUS AND HAZARDOUS SUBSTANCE which should be handled by trained staff only.
Handling Advice:	Avoid repeated freezing and thawing.
Storage:	4 °C/-20 °C
Storage Comment:	At -20°C for one year. After reconstitution, at 4°C for one month. It can also be aliquotted and stored frozen at -20 °C for a longer time. Avoid repeated freezing and thawing.

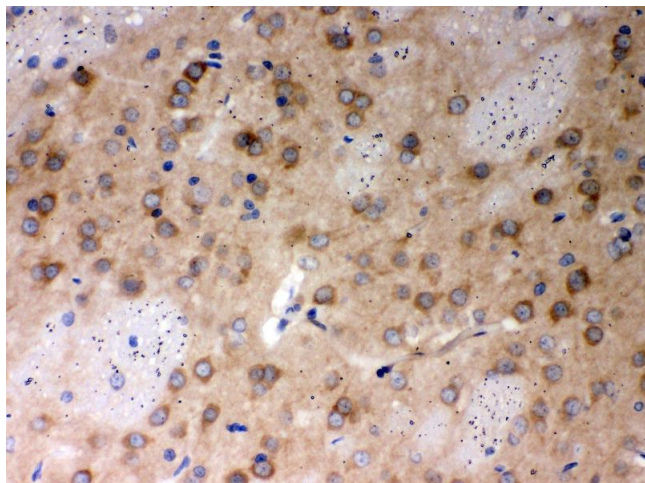
Images



Immunohistochemistry

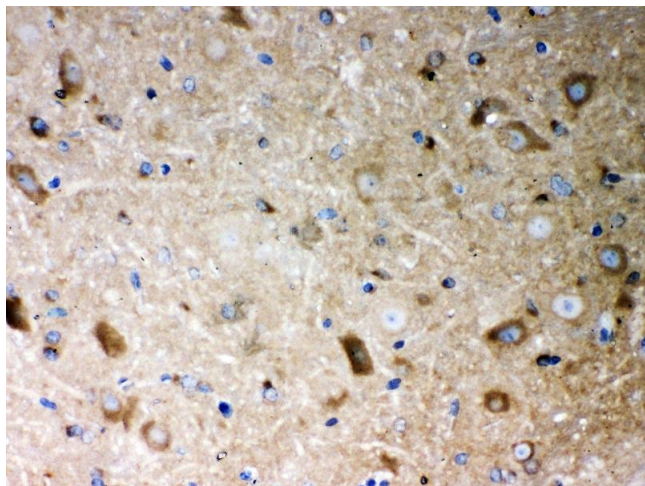
Image 1. Anti- PP2A-alpha Picoband antibody, IHC(P)

IHC(P): Human Lung Cancer Tissue



Immunohistochemistry

Image 2. Anti- PP2A-alpha Picoband antibody, IHC(P)
IHC(P): Rat Brain Tissue



Immunohistochemistry

Image 3. Anti- PP2A-alpha Picoband antibody, IHC(P)
IHC(P): Mouse Brain Tissue

Please check the [product details page](#) for more images. Overall 4 images are available for ABIN3043356.