

Datasheet for ABIN3043361
anti-PKC eta antibody (AA 30-389)



[Go to Product page](#)

1 Image 1 Publication

Overview

Quantity:	100 µg
Target:	PKC eta (PRKCH)
Binding Specificity:	AA 30-389
Reactivity:	Human
Host:	Rabbit
Clonality:	Polyclonal
Conjugate:	This PKC eta antibody is un-conjugated
Application:	Western Blotting (WB)

Product Details

Purpose:	Rabbit IgG polyclonal antibody for Protein kinase C eta type(PRKCH) detection. Tested with WB in Human.
Immunogen:	E.coli-derived human PKC eta recombinant protein (Position: R30-D389). Human PKC eta shares 96.7% and 96.1% amino acid (aa) sequence identity with mouse and rat PKC eta, respectively.
Isotype:	IgG
Cross-Reactivity (Details):	No cross reactivity with other proteins.
Characteristics:	<p>Rabbit IgG polyclonal antibody for Protein kinase C eta type(PRKCH) detection. Tested with WB in Human.</p> <p>Gene Name: protein kinase C, eta</p> <p>Protein Name: Protein kinase C eta type</p>

Product Details

Purification: Immunogen affinity purified.

Target Details

Target: PKC eta (PRKCH)

Alternative Name: PRKCH ([PRKCH Products](#))

Background: PRKCH is also known as PKC eta. Protein kinase C (PKC) is a family of serine- and threonine-specific protein kinases that can be activated by calcium and the second messenger diacylglycerol. PKC family members phosphorylate a wide variety of protein targets and are known to be involved in diverse cellular signaling pathways. Also, PKC family members serve as major receptors for phorbol esters, a class of tumor promoters. Each member of the PKC family has a specific expression profile and is believed to play a distinct role in cells. The protein encoded by this gene is one of the PKC family members. It is a calcium-independent and phospholipids-dependent protein kinase. And it is predominantly expressed in epithelial tissues and has been shown to reside specifically in the cell nucleus. This protein kinase can regulate keratinocyte differentiation by activating the MAP kinase MAPK13 (p38delta)-activated protein kinase cascade that targets CCAAT/enhancer-binding protein alpha (CEBPA). It is also found to mediate the transcription activation of the transglutaminase 1 (TGM1) gene.

Synonyms: KPCL_HUMAN antibody|MGC 5363 antibody|MGC26269 antibody|MGC5363 antibody|nPKC eta antibody| nPKC-eta antibody|PKC h antibody|PKC L antibody|PKC-L antibody|PKCh antibody|PKCL antibody| Prkch antibody|PRKCL antibody|Protein kinase C eta antibody|Protein kinase C eta type antibody

Gene ID: 5583

UniProt: [P24723](#)

Pathways: [Myometrial Relaxation and Contraction](#), [Thromboxane A2 Receptor Signaling](#)

Application Details

Application Notes: WB: Concentration: 0.1-0.5 µg/mL, Tested Species: Human
Notes: Tested Species: Species with positive results.
Other applications have not been tested. Optimal dilutions should be determined by end users.

Comment: Antibody can be supported by chemiluminescence kit ABIN921124 in WB.

Restrictions: For Research Use only

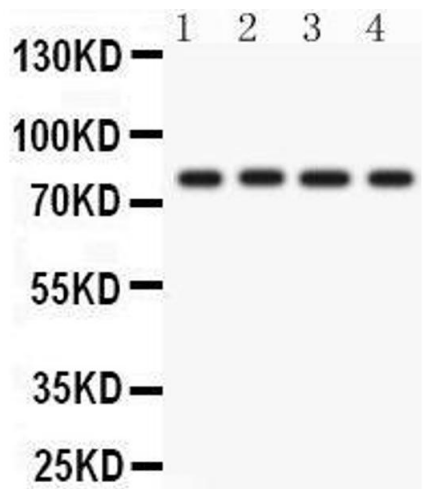
Handling

Format:	Lyophilized
Reconstitution:	Add 0.2 mL of distilled water will yield a concentration of 500 µg/mL.
Concentration:	500 µg/mL
Buffer:	Each vial contains 5 mg BSA, 0.9 mg NaCl, 0.2 mg Na2HPO4, 0.05 mg Sodium azide.
Preservative:	Sodium azide
Precaution of Use:	This product contains Sodium azide: a POISONOUS AND HAZARDOUS SUBSTANCE which should be handled by trained staff only.
Handling Advice:	Avoid repeated freezing and thawing.
Storage:	4 °C/-20 °C
Storage Comment:	At -20°C for one year. After reconstitution, at 4°C for one month. It can also be aliquotted and stored frozen at -20 °C for a longer time. Avoid repeated freezing and thawing.

Publications

Product cited in:	Gan, Wang, Zhao, Wu, Yang, Peng: "5-(Bis(3-(2-hydroxyethyl)-1H-indol-2-yl)methyl)-2-hydroxybenzoic acid (BHIMHA): showing a strategy of designing drug to block lung metastasis of tumors." in: Drug design, development and therapy , Vol. 10, pp. 711-21, (2016) (PubMed).
-------------------	---

Images



Western Blotting

Image 1.