



[Go to Product page](#)

Datasheet for ABIN3043365
anti-RAB18 antibody (C-Term)

1 Image

Overview

Quantity:	100 µg
Target:	RAB18
Binding Specificity:	AA 156-192, C-Term
Reactivity:	Human, Rat
Host:	Rabbit
Clonality:	Polyclonal
Conjugate:	This RAB18 antibody is un-conjugated
Application:	Western Blotting (WB)

Product Details

Purpose:	Rabbit IgG polyclonal antibody for Ras-related protein Rab-18(RAB18) detection. Tested with WB in Human,Rat.
Immunogen:	A synthetic peptide corresponding to a sequence at the C-terminus of human Rab18 (156-192aa DGVQCAFEELVEKIIQTPGLWESENQNKGVKLSHREE), identical to the related mouse sequence, and different from the related rat sequence by one amino acid.
Sequence:	DGVQCAFEEL VEKIIQTPGL WESENQNKGV KLSHREE
Isotype:	IgG
Cross-Reactivity (Details):	No cross reactivity with other proteins.
Characteristics:	Rabbit IgG polyclonal antibody for Ras-related protein Rab-18(RAB18) detection. Tested with WB in Human,Rat. Gene Name: RAB18, member RAS oncogene family

Product Details

Protein Name: Ras-related protein Rab-18

Purification: Immunogen affinity purified.

Target Details

Target: RAB18

Alternative Name: RAB18 ([RAB18 Products](#))

Background: Ras-related protein Rab-18 is a protein that in humans is encoded by the RAB18 gene. It is a ubiquitously expressed protein with particularly high expression in the brain. The protein encoded by this gene is a member of a family of Ras-related small GTPases that regulate membrane trafficking in organelles and transport vesicles. Knockdown studies in zebrafish suggest that this protein may have a role in eye and brain development. Mutations in this gene are associated with Warburg micro syndrome type 3. Alternatively spliced transcript variants have been found for this gene.

Synonyms: AA959686 antibody|RAB18 antibody|RAB18 small GTPase antibody|RAB18, member RAS oncogene family antibody|RAB18_HUMAN antibody|RAB18LI1 antibody|Ras related protein Rab 18 antibody|Ras-associated protein RAB18 antibody|Ras-related protein Rab-18 antibody|RP11-148B2.1 antibody|WARBM3 antibody

Gene ID: 22931

Pathways: [SARS-CoV-2 Protein Interactome](#)

Application Details

Application Notes: WB: Concentration: 0.1-0.5 µg/mL, Tested Species: Human, Rat
Notes: Tested Species: Species with positive results.
Other applications have not been tested. Optimal dilutions should be determined by end users.

Comment: Antibody can be supported by chemiluminescence kit ABIN921124 in WB.

Restrictions: For Research Use only

Handling

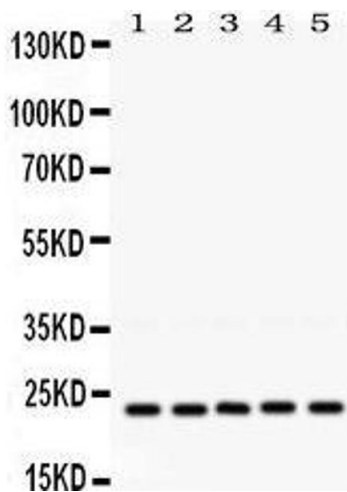
Format: Lyophilized

Reconstitution: Add 0.2 mL of distilled water will yield a concentration of 500 µg/mL.

Handling

Concentration:	500 µg/mL
Buffer:	Each vial contains 5 mg BSA, 0.9 mg NaCl, 0.2 mg Na ₂ HPO ₄ , 0.05 mg Sodium azide.
Preservative:	Sodium azide
Precaution of Use:	This product contains Sodium azide: a POISONOUS AND HAZARDOUS SUBSTANCE which should be handled by trained staff only.
Handling Advice:	Avoid repeated freezing and thawing.
Storage:	4 °C/-20 °C
Storage Comment:	At -20°C for one year. After reconstitution, at 4°C for one month. It can also be aliquotted and stored frozen at -20 °C for a longer time. Avoid repeated freezing and thawing.

Images



Western Blotting

Image 1.