

Datasheet for ABIN3043367
anti-MTDH antibody (AA 101-270)

6 Images

[Go to Product page](#)

Overview

Quantity:	100 µg
Target:	MTDH
Binding Specificity:	AA 101-270
Reactivity:	Human, Mouse, Rat
Host:	Rabbit
Clonality:	Polyclonal
Conjugate:	This MTDH antibody is un-conjugated
Application:	Western Blotting (WB), Immunohistochemistry (Paraffin-embedded Sections) (IHC (p))

Product Details

Purpose:	Rabbit IgG polyclonal antibody for Protein LYRIC(MTDH) detection. Tested with WB, IHC-P in Human, Mouse, Rat.
Immunogen:	E.coli-derived human LYRIC recombinant protein (Position: D101-Q270). Human LYRIC shares 94% amino acid (aa) sequence identity with both mouse and rat LYRIC.
Isotype:	IgG
Cross-Reactivity (Details):	No cross reactivity with other proteins.
Characteristics:	<p>Rabbit IgG polyclonal antibody for Protein LYRIC(MTDH) detection. Tested with WB, IHC-P in Human, Mouse, Rat.</p> <p>Gene Name: metadherin</p> <p>Protein Name: Protein LYRIC</p>
Purification:	Immunogen affinity purified.

Target Details

Target:	MTDH
Alternative Name:	MTDH (MTDH Products)
Background:	<p>MTDH (Metadherin), also known as protein LYRIC or astrocyte elevated gene-1 protein (AEG-1) is a protein that in humans is encoded by the MTDH gene. AEG-1 is involved in HIF-1alpha mediated angiogenesis. AEG-1 also interacts with SND1 and involved in RNA-induced silencing complex (RISC) and plays very important role in RISC and miRNA functions. AEG-1 induces an oncogene called Late SV40 factor (LSF/TFCP2) which is involved in thymidylate synthase (TS) induction and DNA biosynthesis synthesis. Late SV40 factor (LSF/TFCP2) enhances angiogenesis by transcriptionally up-regulating matrix metalloproteinase-9 (MMP9). AEG-1 acts as an oncogene in melanoma, malignant glioma, breast cancer and hepatocellular carcinoma. It is highly expressed in these cancers and helps in progression and development of these cancers. It is induced by c-Myc oncogene and plays very important role in anchorage independent growth of cancer cells.</p> <p>Synonyms: 3D3 antibody 3D3/LYRIC antibody AEG 1 antibody AEG-1 antibody AEG1 antibody Astrocyte elevated gene 1 antibody Astrocyte elevated gene-1 protein antibody LYRIC antibody LYRIC/3D3 antibody LYRIC_HUMAN antibody Lysine rich CEACAM1 associated protein antibody Lysine rich CEACAM1 co isolated protein antibody Lysine-rich CEACAM1 co-isolated protein antibody Metadherin antibody Metastasis adhesion protein antibody MTDH antibody Protein LYRIC antibody</p>
Gene ID:	92140
Pathways:	Cellular Response to Molecule of Bacterial Origin, Cell-Cell Junction Organization

Application Details

Application Notes:	<p>WB: Concentration: 0.1-0.5 µg/mL, Tested Species: Human, Mouse, Rat, The detection limit for LYRIC is approximately 0.1 ng/lane under reducing conditions.</p> <p>IHC-P: Concentration: 0.5-1 µg/mL, Tested Species: Human, Rat, Epitope Retrieval by Heat: Boiling the paraffin sections in 10 mM citrate buffer, pH 6.0, for 20 mins is required for the staining of formalin/paraffin sections.</p> <p>Notes: Tested Species: Species with positive results. Other applications have not been tested. Optimal dilutions should be determined by end users.</p>
Comment:	Antibody can be supported by chemiluminescence kit ABIN921124 in WB, supported by ABIN921231 in IHC(P).

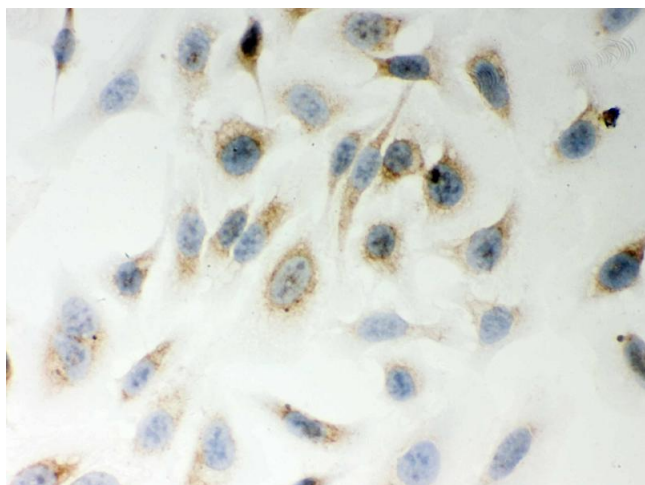
Application Details

Restrictions: For Research Use only

Handling

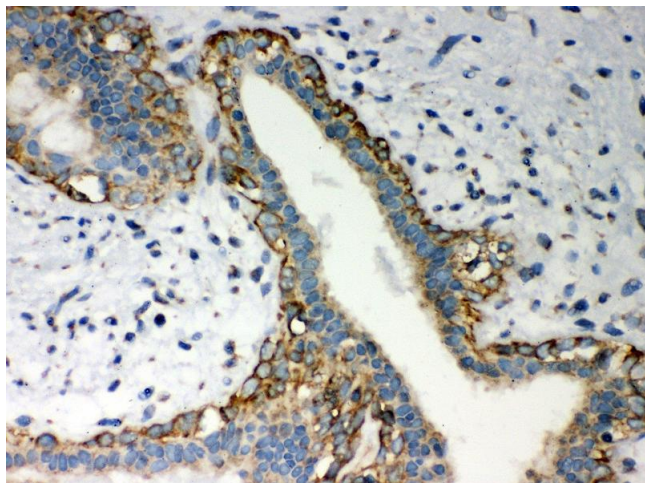
Format:	Lyophilized
Reconstitution:	Add 0.2 mL of distilled water will yield a concentration of 500 µg/mL.
Concentration:	500 µg/mL
Buffer:	Each vial contains 5 mg BSA, 0.9 mg NaCl, 0.2 mg Na ₂ HPO ₄ , 0.05 mg Sodium azide.
Preservative:	Sodium azide
Precaution of Use:	This product contains Sodium azide: a POISONOUS AND HAZARDOUS SUBSTANCE which should be handled by trained staff only.
Handling Advice:	Avoid repeated freezing and thawing.
Storage:	4 °C/-20 °C
Storage Comment:	At -20°C for one year. After reconstitution, at 4°C for one month. It can also be aliquotted and stored frozen at -20 °C for a longer time. Avoid repeated freezing and thawing.

Images



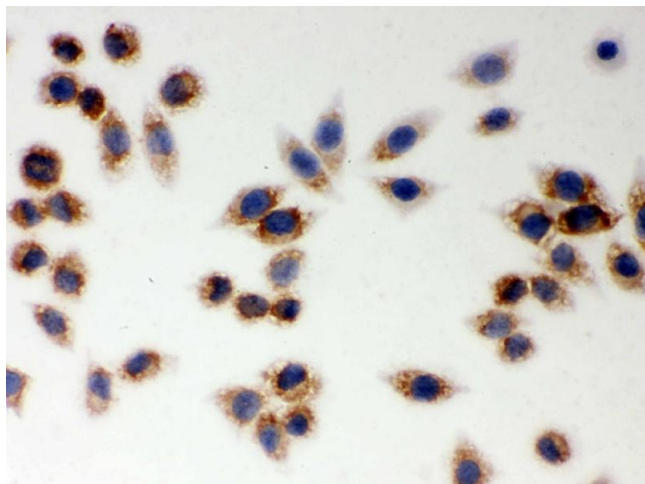
Immunohistochemistry

Image 1. IHC analysis of LYRIC using anti-LYRIC antibody . LYRIC was detected in immunocytochemical section of Hela cell. Heat mediated antigen retrieval was performed in citrate buffer (pH6, epitope retrieval solution) for 20 mins. The tissue section was blocked with 10% goat serum. The tissue section was then incubated with 1µg/ml rabbit anti-LYRIC Antibody overnight at 4°C. Biotinylated goat anti-rabbit IgG was used as secondary antibody and incubated for 30 minutes at 37°C. The tissue section was developed using Streptavidin-Biotin-Complex (SABC)(Catalog # SA1022) with DAB as the chromogen.



Immunohistochemistry

Image 2. Anti- LYRIC Picoband antibody,IHC(P) IHC(P):
Human Mammary Cancer Tissue



Immunohistochemistry

Image 3. IHC analysis of LYRIC using anti-LYRIC antibody .
LYRIC was detected in immunocytochemical section of SMMC-7721 cell. Heat mediated antigen retrieval was performed in citrate buffer (pH6, epitope retrieval solution) for 20 mins. The tissue section was blocked with 10% goat serum. The tissue section was then incubated with 1µg/ml rabbit anti-LYRIC Antibody overnight at 4°C. Biotinylated goat anti-rabbit IgG was used as secondary antibody and incubated for 30 minutes at 37°C. The tissue section was developed using Streptavidin-Biotin-Complex (SABC)(Catalog # SA1022) with DAB as the chromogen.

Please check the [product details page](#) for more images. Overall 6 images are available for ABIN3043367.