



[Go to Product page](#)

Datasheet for ABIN3043379

anti-PAX6 antibody (Middle Region)

4 Images

1 Publication

Overview

Quantity:	100 µg
Target:	PAX6
Binding Specificity:	AA 195-233, Middle Region
Reactivity:	Human, Mouse, Rat
Host:	Rabbit
Clonality:	Polyclonal
Conjugate:	This PAX6 antibody is un-conjugated
Application:	Western Blotting (WB), Immunohistochemistry (Paraffin-embedded Sections) (IHC (p))

Product Details

Purpose:	Rabbit IgG polyclonal antibody for Paired box protein Pax-6(PAX6) detection. Tested with WB, IHC-P in Human,Mouse,Rat.
Immunogen:	A synthetic peptide corresponding to a sequence in the middle region of human PAX6 (195-233aa EDSDEAQMRLQLKRKLQRNRTSFTQEQIEALEKEFERTH), identical to the related mouse and rat sequences.
Sequence:	EDSDEAQMRL QLKRKLQRNR TSFTQEQIEA LEKEFERTH
Isotype:	IgG
Cross-Reactivity (Details):	No cross reactivity with other proteins.
Characteristics:	Rabbit IgG polyclonal antibody for Paired box protein Pax-6(PAX6) detection. Tested with WB, IHC-P in Human,Mouse,Rat. Gene Name: paired box 6

Product Details

Protein Name: Paired box protein Pax-6

Purification: Immunogen affinity purified.

Target Details

Target: PAX6

Alternative Name: PAX6 ([PAX6 Products](#))

Background: Paired box protein Pax-6, also known as aniridia type II protein (AN2) or oculorhombin, is a protein that in humans is encoded by the PAX6 gene. This gene encodes a homeobox and paired domain-containing protein that binds DNA and functions as a regulator of transcription. Activity of this protein is key in the development of neural tissues, particularly the eye. In addition, this gene is regulated by multiple enhancers located up to hundreds of kilobases distant from this locus. Mutations in this gene or in the enhancer regions can cause ocular disorders such as aniridia and Peter's anomaly. Use of alternate promoters and alternative splicing result in multiple transcript variants encoding different isoforms.

Synonyms: AN 2 antibody|AN antibody|AN2 antibody|Aniridia type II protein antibody|D11S812E antibody|FVH1 antibody|MGC17209 antibody|MGDA antibody|Oculorhombin antibody|Paired box 6 antibody|Paired box gene 6 (aniridia keratitis) antibody|Paired Box Gene 6 antibody|Paired box homeotic gene 6 antibody|Paired box protein Pax-6 antibody|Paired box protein Pax6 antibody|PAX 6 antibody|PAX6 antibody| PAX6_HUMAN antibody|Sey antibody|WAGR antibody

Gene ID: 5080

UniProt: [P26367](#)

Pathways: [Peptide Hormone Metabolism](#), [Carbohydrate Homeostasis](#)

Application Details

Application Notes: WB: Concentration: 0.1-0.5 µg/mL, Tested Species: Human, Mouse, Rat
IHC-P: Concentration: 0.5-1 µg/mL, Tested Species: Human, Mouse, Rat, Epitope Retrieval by Heat: Boiling the paraffin sections in 10 mM citrate buffer, pH 6.0, for 20 mins is required for the staining of formalin/paraffin sections.
Notes: Tested Species: Species with positive results. Other applications have not been tested.
Optimal dilutions should be determined by end users.

Comment: Antibody can be supported by chemiluminescence kit ABIN921124 in WB, supported by

Application Details

ABIN921231 in IHC(P).

Restrictions: For Research Use only

Handling

Format: Lyophilized

Reconstitution: Add 0.2 mL of distilled water will yield a concentration of 500 µg/mL.

Concentration: 500 µg/mL

Buffer: Each vial contains 5 mg BSA, 0.9 mg NaCl, 0.2 mg Na₂HPO₄, 0.05 mg Sodium azide.

Preservative: Sodium azide

Precaution of Use: This product contains Sodium azide: a POISONOUS AND HAZARDOUS SUBSTANCE which should be handled by trained staff only.

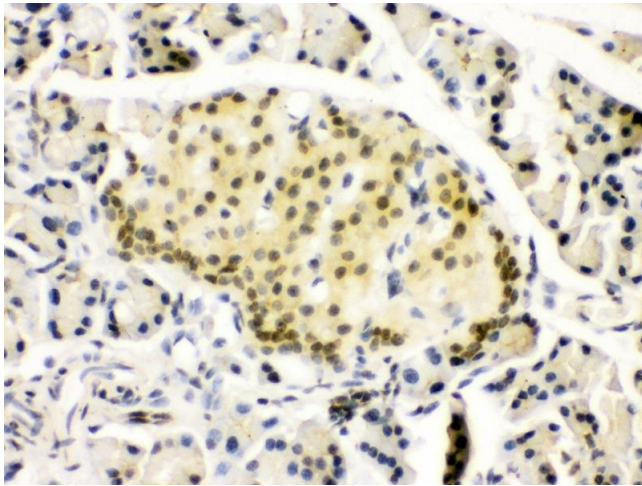
Handling Advice: Avoid repeated freezing and thawing.

Storage: 4 °C/-20 °C

Storage Comment: At -20°C for one year. After reconstitution, at 4°C for one month.
It can also be aliquotted and stored frozen at -20 °C for a longer time. Avoid repeated freezing and thawing.

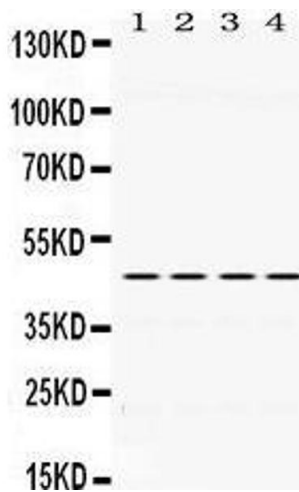
Publications

Product cited in: Liu, Mei, Xu, Yu, Shi, Zhang, Wang, Zhang, Gao, Zhang, He: "Dual Receptor Recognizing Cell Penetrating Peptide for Selective Targeting, Efficient Intratumoral Diffusion and Synthesized Anti-Glioma Therapy." in: **Theranostics**, Vol. 6, Issue 2, pp. 177-91, (2017) ([PubMed](#)).



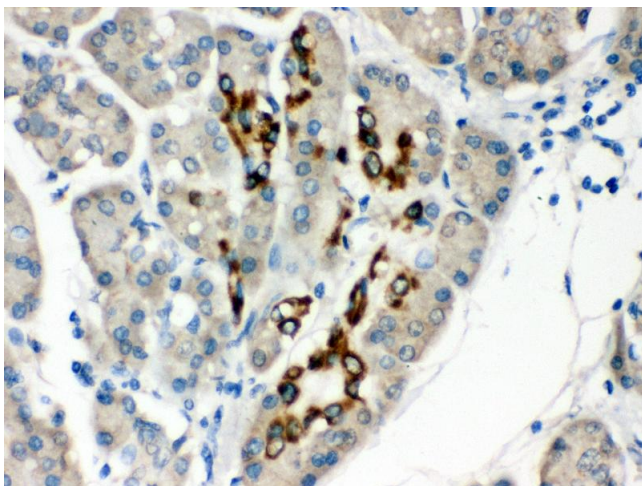
Immunohistochemistry

Image 1. Anti- PAX6 Picoband antibody, IHC(P) IHC(P): Rat Pancreas Tissue



Western Blotting

Image 2.



Immunohistochemistry

Image 3. Anti- PAX6 Picoband antibody, IHC(P) IHC(P): Human Pancreatic Cancer Tissue

Please check the [product details page](#) for more images. Overall 4 images are available for ABIN3043379.