



[Go to Product page](#)

Datasheet for ABIN3043381
anti-PKM antibody (N-Term)

2 Images

Overview

Quantity:	100 µg
Target:	PKM
Binding Specificity:	AA 475-500, N-Term
Reactivity:	Human
Host:	Rabbit
Clonality:	Polyclonal
Conjugate:	This PKM antibody is un-conjugated
Application:	Western Blotting (WB), Immunohistochemistry (Paraffin-embedded Sections) (IHC (p))

Product Details

Purpose:	Rabbit IgG polyclonal antibody for Pyruvate kinase PKM(PKM) detection. Tested with WB, IHC-P in Human.
Immunogen:	A synthetic peptide corresponding to a sequence at the N-terminus of human PKM2(475-500aa KDPVQEAWAEDVDLRVNFAMNVGKAR), different from the related mouse sequence by five amino acids, and from the related rat sequence by four amino acids.
Sequence:	KDPVQEAWAE DVDLRVNFAM NVGKAR
Isotype:	IgG
Cross-Reactivity (Details):	No cross reactivity with other proteins.
Characteristics:	Rabbit IgG polyclonal antibody for Pyruvate kinase PKM(PKM) detection. Tested with WB, IHC-P in Human. Gene Name: pyruvate kinase, muscle

Product Details

Protein Name: Pyruvate kinase PKM

Purification: Immunogen affinity purified.

Target Details

Target: PKM

Alternative Name: PKM ([PKM Products](#))

Background: PKM (Pyruvate Kinase, Muscle), also known as PK3 or PKM2, is an enzyme that in humans is encoded by the PKM gene. The activity of pyruvate kinase subtype M2 is increased by fructose 1, 6-bisphosphate (Fru-1, 6-P2). By in situ hybridization, Popescu and Cheng (1990) mapped the THBP1 gene to 15q24-q25. Ashizawa et al. (1991) manipulated the intracellular Fru-1, 6-P2 concentration in several mammalian cell lines, including human, by varying the glucose concentration in the media. Using a novel proteomic screen for phosphotyrosine-binding proteins, Christofk et al. (2008) observed that PKM2 binds directly and selectively to tyrosine-phosphorylated peptides.

Synonyms: CTHBP antibody|Cytosolic thyroid hormone binding protein antibody|Cytosolic thyroid hormone-binding protein antibody|KPYM_HUMAN antibody|MGC3932 antibody|OIP 3 antibody|OIP-3 antibody|Oip3 antibody|OIP3 antibody|OPA interacting protein 3 antibody|Opa-interacting protein 3 antibody|p58 antibody|PK Muscle type antibody|PK, muscle type antibody|PK2 antibody|Pk3 antibody|PKM antibody|PKM2 antibody|PYKM antibody|Pyruvate kinase 2/3 antibody|Pyruvate kinase 3 antibody|Pyruvate kinase isozymes M1/M2 antibody|Pyruvate kinase muscle antibody|Pyruvate kinase muscle isozyme antibody|Pyruvate kinase, muscle 2 antibody|TCB antibody|THBP1 antibody|Thyroid hormone binding protein 1 antibody|Thyroid hormone binding protein cytosolic antibody|Thyroid hormone-binding protein 1 antibody|Tumor M2 PK antibody|Tumor M2-PK antibody

Gene ID: 5315

UniProt: [P14618](#)

Pathways: [Warburg Effect](#)

Application Details

Application Notes: WB: Concentration: 0.1-0.5 µg/mL, Tested Species: Human, The detection limit for PKM2 is approximately 0.1 ng/lane under reducing conditions.

IHC-P: Concentration: 0.5-1 µg/mL, Tested Species: Human, Epitope Retrieval by Heat: Boiling

Application Details

the paraffin sections in 10 mM citrate buffer, pH 6.0, for 20 mins is required for the staining of formalin/paraffin sections.

Notes: Tested Species: Species with positive results. Other applications have not been tested.
Optimal dilutions should be determined by end users.

Comment: Antibody can be supported by chemiluminescence kit ABIN921124 in WB, supported by ABIN921231 in IHC(P).

Restrictions: For Research Use only

Handling

Format: Lyophilized

Reconstitution: Add 0.2 mL of distilled water will yield a concentration of 500 µg/mL.

Concentration: 500 µg/mL

Buffer: Each vial contains 5 mg BSA, 0.9 mg NaCl, 0.2 mg Na₂HPO₄, 0.05 mg Sodium azide.

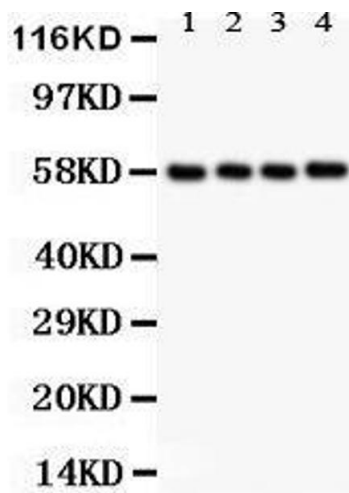
Preservative: Sodium azide

Precaution of Use: This product contains Sodium azide: a POISONOUS AND HAZARDOUS SUBSTANCE which should be handled by trained staff only.

Handling Advice: Avoid repeated freezing and thawing.

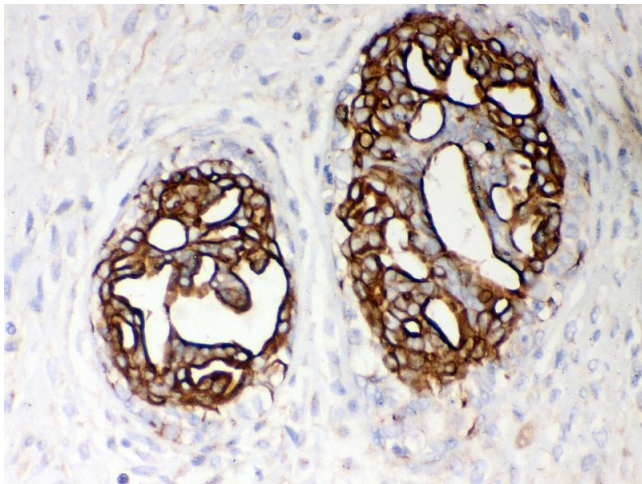
Storage: 4 °C/-20 °C

Storage Comment: At -20°C for one year. After reconstitution, at 4°C for one month.
It can also be aliquotted and stored frozen at -20 °C for a longer time. Avoid repeated freezing and thawing.



Western Blotting

Image 1. Anti- PKM2 Picoband antibody, Western blotting
All lanes: Anti PKM2 at 0.5ug/ml Lane 1: MCF-7 Whole Cell Lysate at 40ug Lane 2: MM231 Whole Cell Lysate at 40ug Lane 3: MM453 Whole Cell Lysate at 40ug Lane 4: HELA Whole Cell Lysate at 40ug Predicted bind size: 58KD Observed bind size: 58KD



Immunohistochemistry

Image 2. Anti- PKM2 Picoband antibody, IHC(P) IHC(P):
Human Mammary Cancer Tissue