

Datasheet for ABIN3043403
anti-LIF antibody (AA 23-202)[Go to Product page](#)

3 Images

7 Publications

Overview

Quantity:	100 µg
Target:	LIF
Binding Specificity:	AA 23-202
Reactivity:	Human
Host:	Rabbit
Clonality:	Polyclonal
Conjugate:	This LIF antibody is un-conjugated
Application:	Western Blotting (WB), Immunohistochemistry (Paraffin-embedded Sections) (IHC (p))

Product Details

Purpose:	Rabbit IgG polyclonal antibody for Leukemia inhibitory factor(LIF) detection. Tested with WB, IHC-P in Human.
Immunogen:	E.coli-derived human LIF recombinant protein (Position: S23-F202). Human LIF shares 78% and 82% amino acid (aa) sequences identity with mouse and rat LIF, respectively.
Isotype:	IgG
Cross-Reactivity (Details):	No cross reactivity with other proteins.
Characteristics:	Rabbit IgG polyclonal antibody for Leukemia inhibitory factor(LIF) detection. Tested with WB, IHC-P in Human. Gene Name: leukemia inhibitory factor Protein Name: Leukemia inhibitory factor
Purification:	Immunogen affinity purified.

Target Details

Target:	LIF
Alternative Name:	LIF (LIF Products)
Background:	<p>LIF is a pleiotropic cytokine produced at the maternal-fetal interface which has been shown to play an essential role in implantation in mice. This gene is mapped to 22q11-q12.2, between the Philadelphia translocation BCR gene and the breakpoint of the translocation in cell line GM2324 at 22q12.2. LIF is produced in high amounts by the human endometrium and the trophoblast itself, and LIF receptors are present on cytotrophoblast cells. LIF could, thus, play a role in modulating HLA-G production and immune tolerance at the maternal-fetal interface.</p> <p>Synonyms: CDF antibody Cholinergic Differentiation Factor antibody D factor antibody DIA antibody Differentiation inducing factor antibody differentiation inhibitory activity antibody Differentiation stimulating factor antibody Differentiation-stimulating factor antibody Emfilermin antibody Hepatocyte stimulating factor III antibody HILDA antibody Human interleukin in DA cells antibody Leukemia inhibitory factor antibody LIF antibody LIF_HUMAN antibody Melanoma derived LPL inhibitor antibody Melanoma-derived LPL inhibitor antibody MLPLI antibody</p>
Gene ID:	3976
UniProt:	P15018
Pathways:	JAK-STAT Signaling , Positive Regulation of Peptide Hormone Secretion , Negative Regulation of Hormone Secretion , Stem Cell Maintenance , Growth Factor Binding

Application Details

Application Notes:	<p>WB: Concentration: 0.1-0.5 µg/mL, Tested Species: Human, The detection limit for LIF is approximately 0.25 ng/lane under reducing conditions.</p> <p>IHC-P: Concentration: 0.5-1 µg/mL, Tested Species: Human, Epitope Retrieval by Heat: Boiling the paraffin sections in 10 mM citrate buffer, pH 6.0, for 20 mins is required for the staining of formalin/paraffin sections.</p> <p>Notes: Tested Species: Species with positive results. Other applications have not been tested. Optimal dilutions should be determined by end users.</p>
Comment:	Antibody can be supported by chemiluminescence kit ABIN921124 in WB, supported by ABIN921231 in IHC(P).
Restrictions:	For Research Use only

Handling

Format:	Lyophilized
Reconstitution:	Add 0.2 mL of distilled water will yield a concentration of 500 µg/mL.
Concentration:	500 µg/mL
Buffer:	Each vial contains 5 mg BSA, 0.9 mg NaCl, 0.2 mg Na ₂ HPO ₄ , 0.05 mg Sodium azide.
Preservative:	Sodium azide
Precaution of Use:	This product contains Sodium azide: a POISONOUS AND HAZARDOUS SUBSTANCE which should be handled by trained staff only.
Handling Advice:	Avoid repeated freezing and thawing.
Storage:	4 °C/-20 °C
Storage Comment:	At -20°C for one year. After reconstitution, at 4°C for one month. It can also be aliquotted and stored frozen at -20 °C for a longer time. Avoid repeated freezing and thawing.

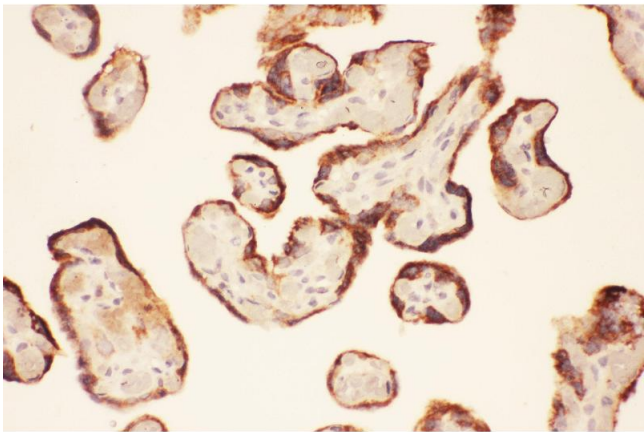
Publications

Product cited in:	<p>Yang, Gao, Wu, Yu, Li, Meng, Li, Yan, Jin: "Epigallocatechin-3-gallate attenuates neointimal hyperplasia in a rat model of carotid artery injury by inhibition of high mobility group box 1 expression." in: Experimental and therapeutic medicine, Vol. 14, Issue 3, pp. 1975-1982, (2017) (PubMed).</p> <p>Yu, Yu, Liu, Yu, Liu, Liu, Su, Jiang, Chen: "Ethyl pyruvate attenuated coxsackievirus B3-induced acute viral myocarditis by suppression of HMGB1/RAGE/NF-KB pathway." in: SpringerPlus, Vol. 5, pp. 215, (2016) (PubMed).</p> <p>Qin, Niu, Wang, Xu, Qiao, Gu: "Heparanase induced by advanced glycation end products (AGEs) promotes macrophage migration involving RAGE and PI3K/AKT pathway." in: Cardiovascular diabetology, Vol. 12, pp. 37, (2013) (PubMed).</p> <p>Liu, Wang, Feng, Ma, Fu, Song, Jia, Ma: "Hypoglycemic and antioxidant activities of paeonol and its beneficial effect on diabetic encephalopathy in streptozotocin-induced diabetic rats." in: Journal of medicinal food, Vol. 16, Issue 7, pp. 577-86, (2013) (PubMed).</p> <p>Wang, Zhang, Liu, Cui, Yang, Li, Du: "Tanshinone II A down-regulates HMGB1, RAGE, TLR4, NF-kappaB expression, ameliorates BBB permeability and endothelial cell function, and protects rat</p>
-------------------	--

brains against focal ischemia." in: **Brain research**, Vol. 1321, pp. 143-51, (2010) ([PubMed](#)).

There are more publications referencing this product on: [Product page](#)

Validation report #100035 for Immunohistochemistry (IHC)



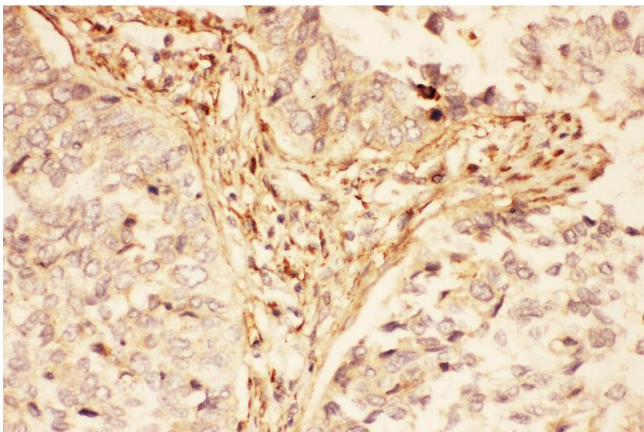
Immunohistochemistry

Image 1. Anti-LIF Picoband antibody, IHC(P): Human Placenta Tissue



Western Blotting

Image 2. Anti-LIF Picoband antibody, All lanes: Anti-LIF at 0.5ug/ml WB: Recombinant Human LIF Protein 0.5ng
Predicted bind size: 50KD Observed bind size: 50KD



Immunohistochemistry

Image 3. Anti-LIF Picoband antibody, IHC(P): Human Lung Cancer Tissue