

Datasheet for ABIN3043424
anti-MSK1 antibody (AA 540-665)

5 Images

[Go to Product page](#)

Overview

Quantity:	100 µg
Target:	MSK1 (RPS6KA5)
Binding Specificity:	AA 540-665
Reactivity:	Human, Mouse, Rat
Host:	Rabbit
Clonality:	Polyclonal
Application:	Western Blotting (WB), Immunohistochemistry (Paraffin-embedded Sections) (IHC (p)), Immunocytochemistry (ICC)

Product Details

Purpose:	Rabbit IgG polyclonal antibody for Ribosomal protein S6 kinase alpha-5(RPS6KA5) detection. Tested with WB, IHC-P, ICC in Human,Mouse,Rat.
Immunogen:	E.coli-derived human MSK1 recombinant protein (Position: V540-Q665). Human MSK1 shares 98% amino acid (aa) sequence identity with mouse MSK1.
Isotype:	IgG
Cross-Reactivity (Details):	No cross reactivity with other proteins.
Characteristics:	Rabbit IgG polyclonal antibody for Ribosomal protein S6 kinase alpha-5(RPS6KA5) detection. Tested with WB, IHC-P, ICC in Human,Mouse,Rat. Gene Name: ribosomal protein S6 kinase, 90 kDa, polypeptide 5 Protein Name: Ribosomal protein S6 kinase alpha-5
Purification:	Immunogen affinity purified.

Target Details

Target:	MSK1 (RPS6KA5)
Alternative Name:	RPS6KA5 (RPS6KA5 Products)
Background:	<p>Ribosomal protein S6 kinase alpha-5, also known as MSK1, is an enzyme that in humans is encoded by the RPS6KA5 gene. It belongs to the AGC family of kinases. MSK1 gene is mapped to chromosome 14q31-q32. Northern blot analysis indicated that MSK1 was expressed as a 4-kb mRNA in all tissues tested, with the highest levels of expression in brain, muscle, and placenta. MSK1 was activated in vitro and in vivo by either ERK or SAPK2 proteins. It has been found that MSK1, rather than MAPKAP-K1 or MAPKAP-K2/K3, mediates activation of the cAMP response element-binding protein and activating transcription factor-1 by either growth factors or stress signals.</p> <p>Synonyms: 90 kDa ribosomal protein S6 kinase 5 antibody KS6A5_HUMAN antibody MGC1911 antibody Mitogen and stress activated protein kinase 1 antibody MSPK1 antibody Nuclear Mitogen And Stress Activated Protein Kinase 1 antibody Nuclear mitogen- and stress-activated protein kinase 1 antibody Ribosomal protein S6 kinase 90kD polypeptide 5 antibody Ribosomal protein S6 kinase 90 kDa antibody Ribosomal protein S6 kinase 90 kDa polypeptide 5 antibody Ribosomal Protein S6 Kinase Alpha 5 antibody Ribosomal protein S6 kinase alpha-5 antibody RLPK antibody RPS6KA5 antibody RSK Like Protein Kinase antibody RSK-like protein kinase antibody RSKL antibody S6K alpha 5 antibody S6K-alpha-5 antibody</p>
Gene ID:	9252
UniProt:	O75582
Pathways:	MAPK Signaling , EGFR Signaling Pathway , Neurotrophin Signaling Pathway , Activation of Innate immune Response , Toll-Like Receptors Cascades

Application Details

Application Notes:	<p>WB: Concentration: 0.1-0.5 µg/mL, Tested Species: Human, Rat, The detection limit for MSK1 is approximately 0.25 ng/lane under reducing conditions.</p> <p>IHC-P: Concentration: 0.5-1 µg/mL, Tested Species: Human, Mouse, Rat, Epitope Retrieval by Heat: Boiling the paraffin sections in 10 mM citrate buffer, pH 6.0, for 20 mins is required for the staining of formalin/paraffin sections.</p> <p>ICC: Concentration: 0.5-1 µg/mL, Tested Species: Human</p> <p>Notes: Tested Species: Species with positive results. Other applications have not been tested.</p> <p>Optimal dilutions should be determined by end users.</p>
--------------------	---

Application Details

Comment:	Antibody can be supported by chemiluminescence kit ABIN921124 in WB, supported by ABIN921231 in IHC(P) and ICC.
Restrictions:	For Research Use only

Handling

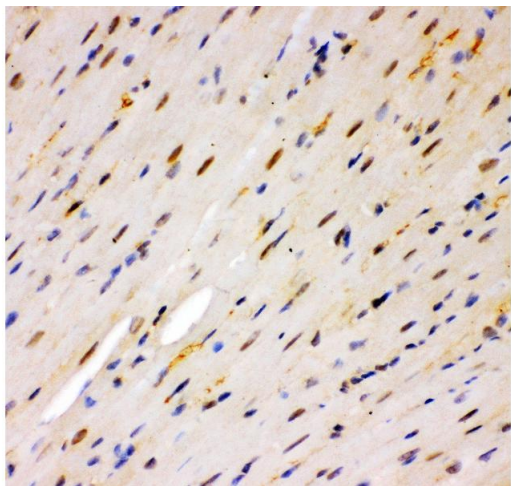
Format:	Lyophilized
Reconstitution:	Add 0.2 mL of distilled water will yield a concentration of 500 µg/mL.
Concentration:	500 µg/mL
Buffer:	Each vial contains 5 mg BSA, 0.9 mg NaCl, 0.2 mg Na ₂ HPO ₄ , 0.05 mg Sodium azide.
Preservative:	Sodium azide
Precaution of Use:	This product contains Sodium azide: a POISONOUS AND HAZARDOUS SUBSTANCE which should be handled by trained staff only.
Handling Advice:	Avoid repeated freezing and thawing.
Storage:	4 °C/-20 °C
Storage Comment:	At -20°C for one year. After reconstitution, at 4°C for one month. It can also be aliquotted and stored frozen at -20 °C for a longer time. Avoid repeated freezing and thawing.

Images



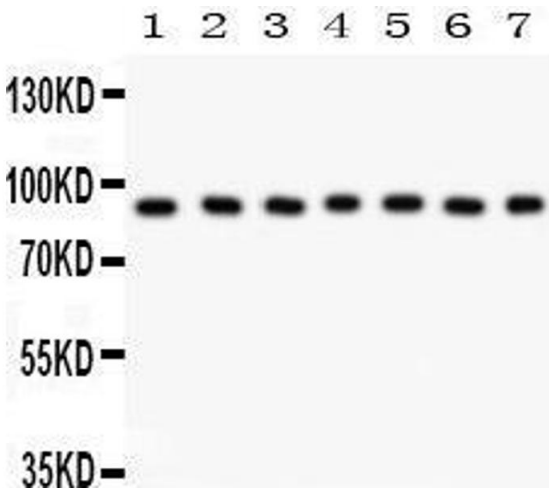
Western Blotting

Image 1. Anti- MSK1 Picoband antibody, Western blotting
All lanes: Anti MSK1 at 0.5ug/ml WB: Recombinant Human MSK1 Protein 0.5ng Predicted bind size: 50KD Observed bind size: 50KD



Immunohistochemistry

Image 2. Anti- MSK1 Picoband antibody, IHC(P) IHC(P):
Mouse Cardiac Muscle Tissue



Western Blotting

Image 3. Anti- MSK1 Picoband antibody, Western blotting
All lanes: Anti MSK1 at 0.5ug/ml Lane 1: Human Placenta
Tissue Lysate at 50ug Lane 2: Rat Brain Tissue Lysate at
50ug Lane 3: JURKAT Whole Cell Lysate at 40ug Lane 4:
HELA Whole Cell Lysate at 40ug Lane 5: PANC Whole Cell
Lysate at 40ug Lane 6: A549 Whole Cell Lysate at 40ug Lane
7: HEPG2 Whole Cell Lysate at 40ug Predicted bind size:
90KD Observed bind size: 90KD

Please check the [product details page](#) for more images. Overall 5 images are available for ABIN3043424.