

Datasheet for ABIN3043431

## anti-SERPINA1 antibody (AA 211-411)



[Go to Product page](#)

3 Images

1 Publication

### Overview

Quantity:	100 µg
Target:	SERPINA1
Binding Specificity:	AA 211-411
Reactivity:	Rat, Mouse
Host:	Rabbit
Clonality:	Polyclonal
Conjugate:	This SERPINA1 antibody is un-conjugated
Application:	Western Blotting (WB), Immunohistochemistry (Paraffin-embedded Sections) (IHC (p))

### Product Details

Purpose:	Rabbit IgG polyclonal antibody for Alpha-1-antiproteinase(SERPINA1) detection. Tested with WB, IHC-P in Mouse,Rat.
Immunogen:	E.coli-derived rat SERPINA1 recombinant protein (Position: K211-R411). Rat SERPINA1 shares 66% amino acid (aa) sequence identity with human SERPINA1.
Isotype:	IgG
Cross-Reactivity (Details):	No cross reactivity with other proteins.
Characteristics:	<p>Rabbit IgG polyclonal antibody for Alpha-1-antiproteinase(SERPINA1) detection. Tested with WB, IHC-P in Mouse,Rat.</p> <p>Gene Name: serpin peptidase inhibitor, clade A (alpha-1 antiproteinase, antitrypsin), member 1</p> <p>Protein Name: Alpha-1-antiproteinase</p>
Purification:	Immunogen affinity purified.

## Target Details

Target:	SERPINA1
Alternative Name:	SERPINA1 ( <a href="#">SERPINA1 Products</a> )
Background:	<p>SERPINA1 is also known as PI, A1A or AAT. The protein encoded by this gene is secreted and is a serine protease inhibitor whose targets include elastase, plasmin, thrombin, trypsin, chymotrypsin, and plasminogen activator. Defects in this gene can cause emphysema or liver disease. Several transcript variants encoding the same protein have been found for this gene.</p> <p>Synonyms: A1A antibody A1AT antibody A1AT_HUMAN antibody AAT antibody Alpha 1 antiproteinase antibody Alpha 1 antitrypsin antibody Alpha 1 antitrypsin null antibody Alpha 1 protease inhibitor antibody Alpha-1 protease inhibitor antibody Alpha-1-antiproteinase antibody alpha-1-AT antibody alpha1 PI antibody alpha1 proteinase inhibitor antibody Alpha1AT antibody Clade A (alpha 1 antiproteinase antitrypsin) member 1 antibody Dom1 antibody MGC23330 antibody MGC9222 antibody PI antibody PI1 antibody PRO2275 antibody Protease inhibitor 1 (anti elastase) antibody Serine (or cysteine) proteinase inhibitor clade A member 1 antibody Serine protease inhibitor 1-1 antibody Serine protease inhibitor A1a antibody Serpina1 antibody Serpina1a antibody Serpina1 peptidase inhibitor clade A (alpha 1 antiproteinase antitrypsin) member 1 antibody Serpina1 peptidase inhibitor clade A member 1 antibody Serpina1 antibody Short peptide from AAT antibody SPAAT antibody Spi1-1 antibody</p>
Gene ID:	24648
UniProt:	<a href="#">P17475</a>

## Application Details

Application Notes:	<p>WB: Concentration: 0.1-0.5 µg/mL, Tested Species: Mouse, Rat, The detection limit for SERPINA1 is approximately 0.1 ng/lane under reducing conditions.</p> <p>IHC-P: Concentration: 0.5-1 µg/mL, Tested Species: Mouse, Rat, Epitope Retrieval by Heat: Boiling the paraffin sections in 10 mM citrate buffer, pH 6.0, for 20 mins is required for the staining of formalin/paraffin sections.</p> <p>Notes: Tested Species: Species with positive results. Other applications have not been tested. Optimal dilutions should be determined by end users.</p>
Comment:	Antibody can be supported by chemiluminescence kit ABIN921124 in WB, supported by ABIN921231 in IHC(P).
Restrictions:	For Research Use only

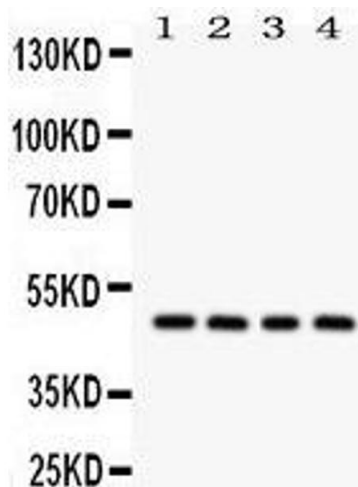
## Handling

Format:	Lyophilized
Reconstitution:	Add 0.2 mL of distilled water will yield a concentration of 500 µg/mL.
Concentration:	500 µg/mL
Buffer:	Each vial contains 5 mg BSA, 0.9 mg NaCl, 0.2 mg Na <sub>2</sub> HPO <sub>4</sub> , 0.05 mg Sodium azide.
Preservative:	Sodium azide
Precaution of Use:	This product contains Sodium azide: a POISONOUS AND HAZARDOUS SUBSTANCE which should be handled by trained staff only.
Handling Advice:	Avoid repeated freezing and thawing.
Storage:	4 °C/-20 °C
Storage Comment:	At -20°C for one year. After reconstitution, at 4°C for one month. It can also be aliquotted and stored frozen at -20 °C for a longer time. Avoid repeated freezing and thawing.

## Publications

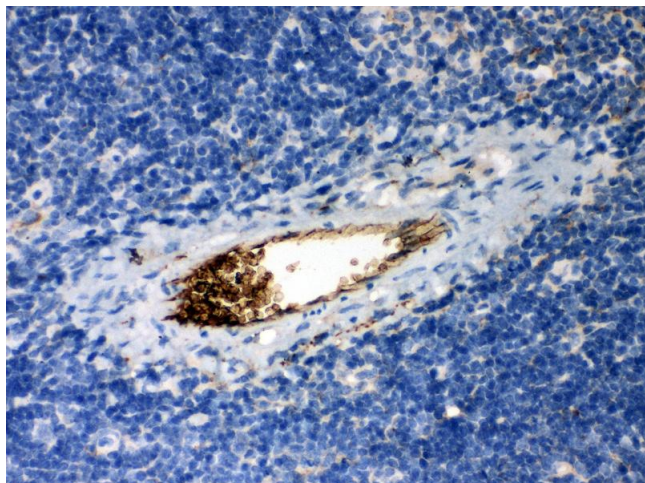
Product cited in:	Yu, Chen, Jiang: "Administration of pigment epithelium-derived factor delivered by adeno-associated virus inhibits blood-retinal barrier breakdown in diabetic rats." in: <b>Molecular vision</b> , Vol. 16, pp. 2384-94, (2011) ( <a href="#">PubMed</a> ).
-------------------	--

## Images



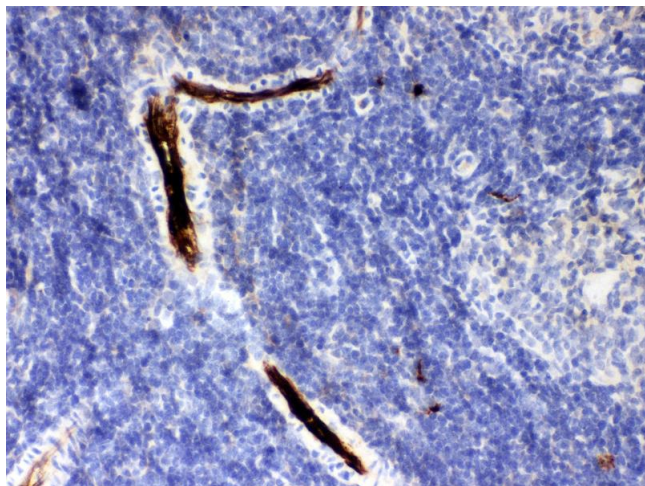
Western Blotting

Image 1.



#### Immunohistochemistry

**Image 2.** Anti- SERPINA1 Picoband antibody, IHC(P) IHC(P):  
Mouse Spleen Tissue



#### Immunohistochemistry

**Image 3.** Anti- SERPINA1 Picoband antibody, IHC(P) IHC(P):  
Rat Spleen Tissue